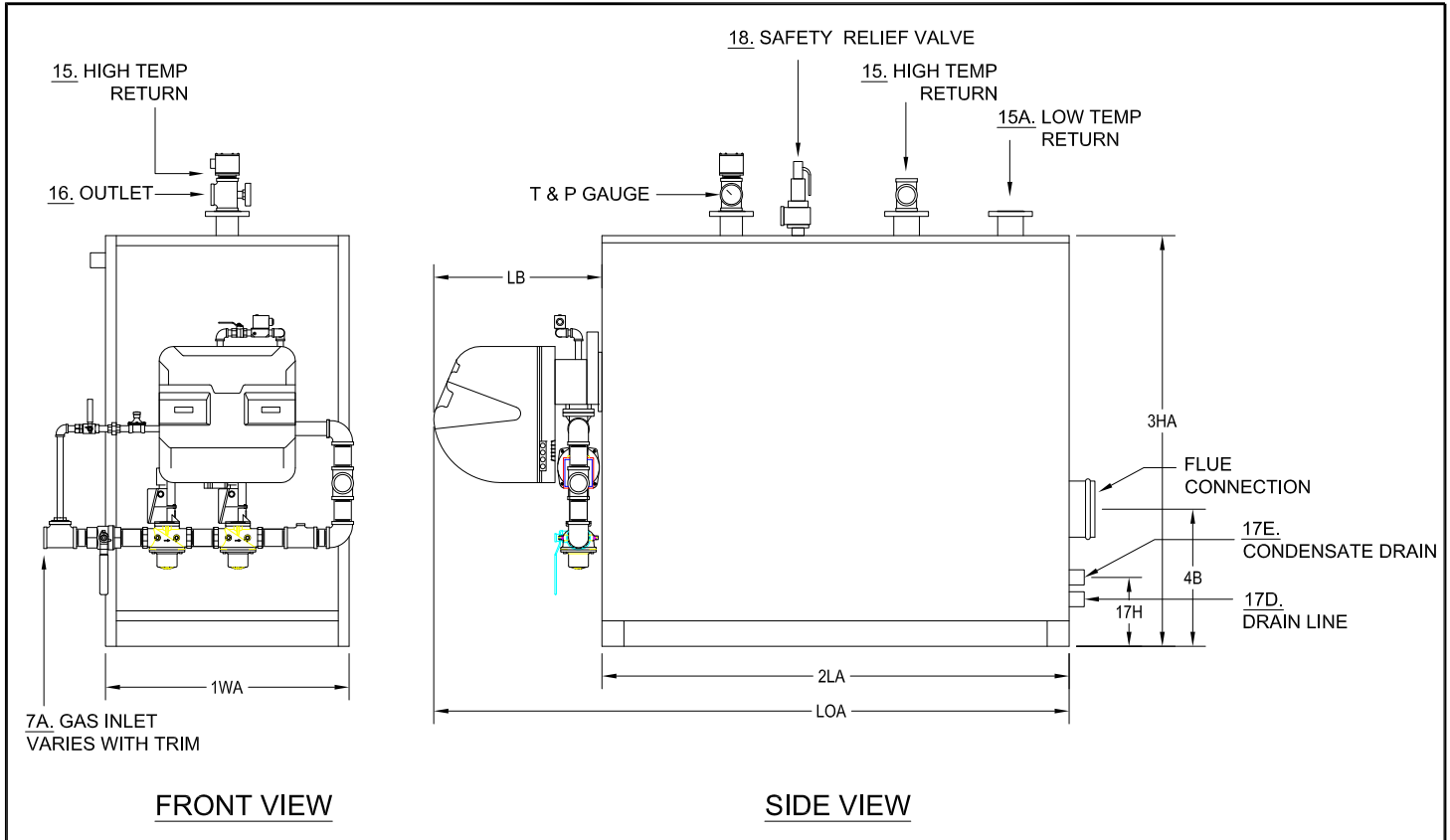


PARKER CONDENSING HOT WATER BOILERS
 SCAQMD PRECERTIFIED LOW NOX GAS FIRED
 MODELS TC150 TO TC600, UP TO 2,000,000 BTUH



NO.	ITEM	MODEL NO.	TC150(L)	TC210(L)	TC350(L)	TC600(2.0)(L)
A	BTU Input	1000's BTU/HR.	563	788	1314	2000
B	BTU Output (Maximum)	1000's BTU/HR.	535	749	1249	1900
C	Heating Surface	SQ. FT.	65	94	175	310
D	Efficiency	%	95	95	95	95
1WA	Width of Cabinet	IN.	30	30	33	35-1/2
2LA	Length of Cabinet	IN.	58	58	72	91
LB	Length of Burner	IN.	20	20	23	26
LOA	Length Overall	IN.	78	78	95	117
3HA	Height of Cabinet	IN.	56	56	59	67
4A	Vent Collar Diameter	IN.	8	8	10	12
4B	Vent Collar Height	IN.	20	20	21-1/2	25-1/2
7A	Low Press. Natural Gas Inlet Supply Press. MAX 14" W.C.	MIN: " W.C.	STD 7	STD 7	STD 10	STD 12
	Low Press. Natural Gas Inlet Size	NPT	1	1	1-1/2	2
7B	High Pressure Nat. Gas or LPG (1-2 PSI Press. Range)	NSTD	NSTD	NSTD	NSTD	NSTD
	High Pressure Natural Gas or LPG Gas Inlet Size	NPT	1	1	1-1/2	1-1/2
7C	Low Press LPG Gas Inlet Supply Press. MAX 14" W.C.	MIN: " W.C.	STD 8	STD 8	STD 10	STD 11
	Low Press LPG Gas Inlet Size	NPT	1	1	1	1-1/2
15	High Temperature Return NPT 2" All Others CL150 FLG.	IN.	2	2	2-1/2	3
15A	Low Temperature Return NPT 2" All Others CL150 FLG.	IN.	2-1/2	2-1/2	3	4
16	Outlet NPT 2" All Others CL150 FLG.	IN.	2	2	2-1/2	3
17D	Drain Line Size Required	IN.	1	1	1	1
17E	Condensate Drain Line Size	IN.	1	1	1	1-1/4
17H	Condensate Drain Line Height	IN.	6	6	6-1/4	8-1/4
18	Safety Relief Valve Size 75 PSI	IN.	3/4	1	1-1/2	1-1/2
20A	POWER SPECIFICATIONS	VOLTAGE/PH	115V/1PH		230V/3Ph & 115V	
20B	Controls (115V-1Ph-60Hz)					
21	Blower HP	HP	1/2		1	2
	Water Capacity	GAL.	85	95	145	205
	Net Dry Weight of Boiler	LBS.	1350	1400	1925	3125
	Crated Shipping Weight of Boiler- Approximate	LBS.	1490	1490	2125	3425
	Operating Weight	LBS.	2060	2195	3135	4835

Recommended Clearances for Access: Front 30" For 115V, 36" For 208-460V, Front Door Swings to the Right Side, Sides 18" Min., Back 24" TC150 & TC210, 30" All other models, Top 24" Additional space may be required by Local Codes.

Notes: Due to continuous improvement, specifications are subject to change without notice.

STD-Standard
 NSTD-Not Standard