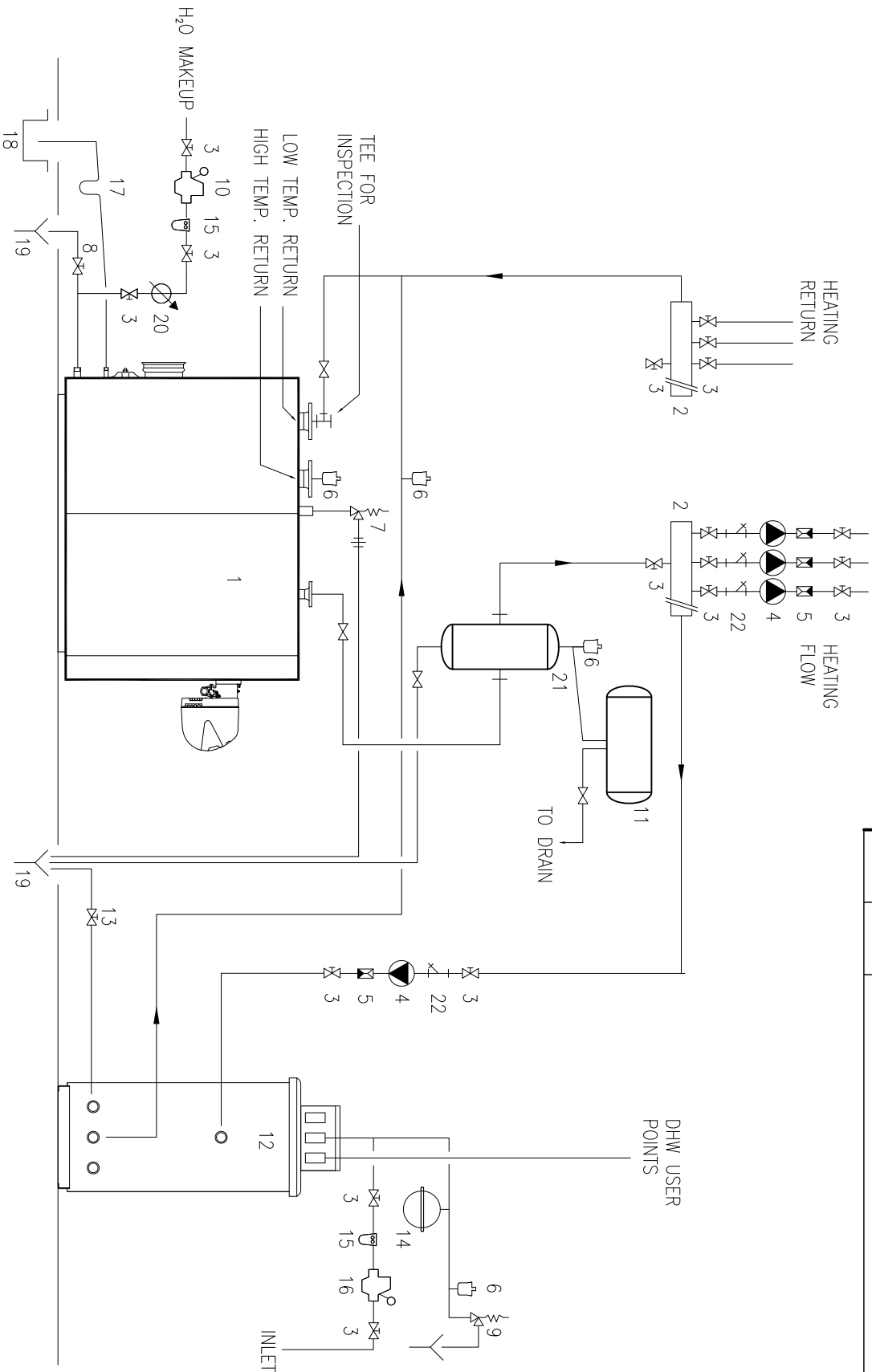


REV.	DATE	DESCRIPTION
1		



- 1 - Boiler
- 2 - Heating system manifolds
- 3 - Isolating valves
- 4 - Pump
- 5 - Non-return valves
- 6 - Automatic vent valve
- 7 - Boiler safety valve
- 8 - Boiler drain cock
- 9 - Storage heater safety valve
- 10 - Heating system filling valve, pressure regulator and RPBFPP
- 11 - Heating system expansion valve
- 12 - Remote storage cylinder
- 13 - Storage cylinder drain cock
- 14 - DHW circuit expansion vessel
- 15 - Water softener/filter
- 16 - Pressure reducer
- 17 - Siphon
- 18 - Condensate drain
- 19 - Drain
- 20 - Servo valve
- 21 - Water supply/top-up counter
- 22 - Air and Dirt Separator RPBFPP - Reverse pressure backflow preventer Per Code

NOTE: If the heating circuit operates at a pressure greater than the working pressure of the boiler, fit a heat exchanger between the boiler and the heating system flow and return manifolds.

PAPER SIZE		A	
DR.	DATE	1/17/11	
CH.	FDL		
APPROVED			
SUPERSEDES			
USED ON PARKER CONDENSING BOILER		PART NAME FUNCTIONAL LAYOUT-DIRECT SYSTEMS W/ DOMESTIC HW	
FOR PARKER CONDENSING BOILER			
PAPER SIZE		A	
SCALE		CAD DRAWING	
DIMENSION UNITS		INCHES	
FILE DESIGNATION		205.205----	
DWG. NO.		205.205.001	
LOS ANGELES, CA		90040	