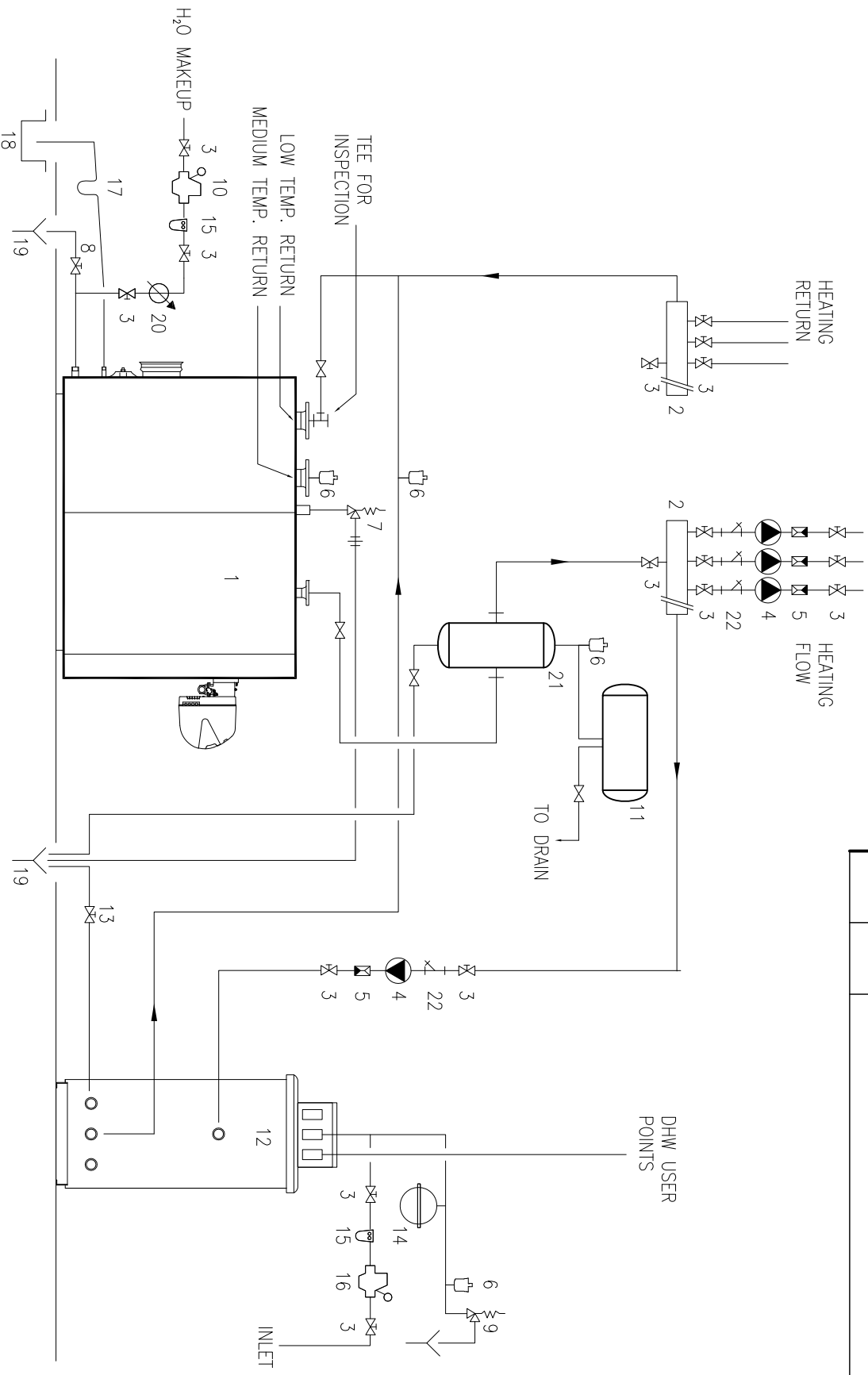


REV.	DATE	DESCRIPTION



- 1 - Boiler
- 2 - Heating system manifolds
- 3 - Isolating valves
- 4 - Pump
- 5 - Non-return valves
- 6 - Automatic vent valve
- 7 - Boiler safety valve
- 8 - Boiler drain valve
- 9 - Storage heater safety valve
- 10 - Heating system filling valve, RPBF
- 11 - Heating system expansion valve
- 12 - Remote storage cylinder
- 13 - Storage cylinder drain cock
- 14 - DHW circuit expansion vessel
- 15 - Water softener/filter
- 16 - Pressure reducer
- 17 - Siphon
- 18 - Condensate drain
- 19 - Drain
- 20 - Water supply/top-up counter
- 21 - Air and Dirt Separator
- 22 - Strainer

NOTE: If the heating circuit operates at a pressure greater than the working pressure of the boiler, fit a heat exchanger between the boiler and the heating system flow and return manifolds.

PAPER SIZE	USED ON	PART NAME
	FOR	FUNCTIONAL LAYOUT-DIRECT SYSTEMS
A	DR.	DATE
	CH.	DATE
APPROVED	PARKER CONDENSING BOILER	
	PARKER CONDENSING BOILER	
SUPERSEDES	PARKER CONDENSING BOILER	
	PARKER CONDENSING BOILER	
PARKER BOILER CO. 5930 BANDINI BLVD. LOS ANGELES, CA 90040		
SCALE	CAD DRAWING	
DWG. NO.	205 DIRECT SYSTEMS-LAYOUT 1206	