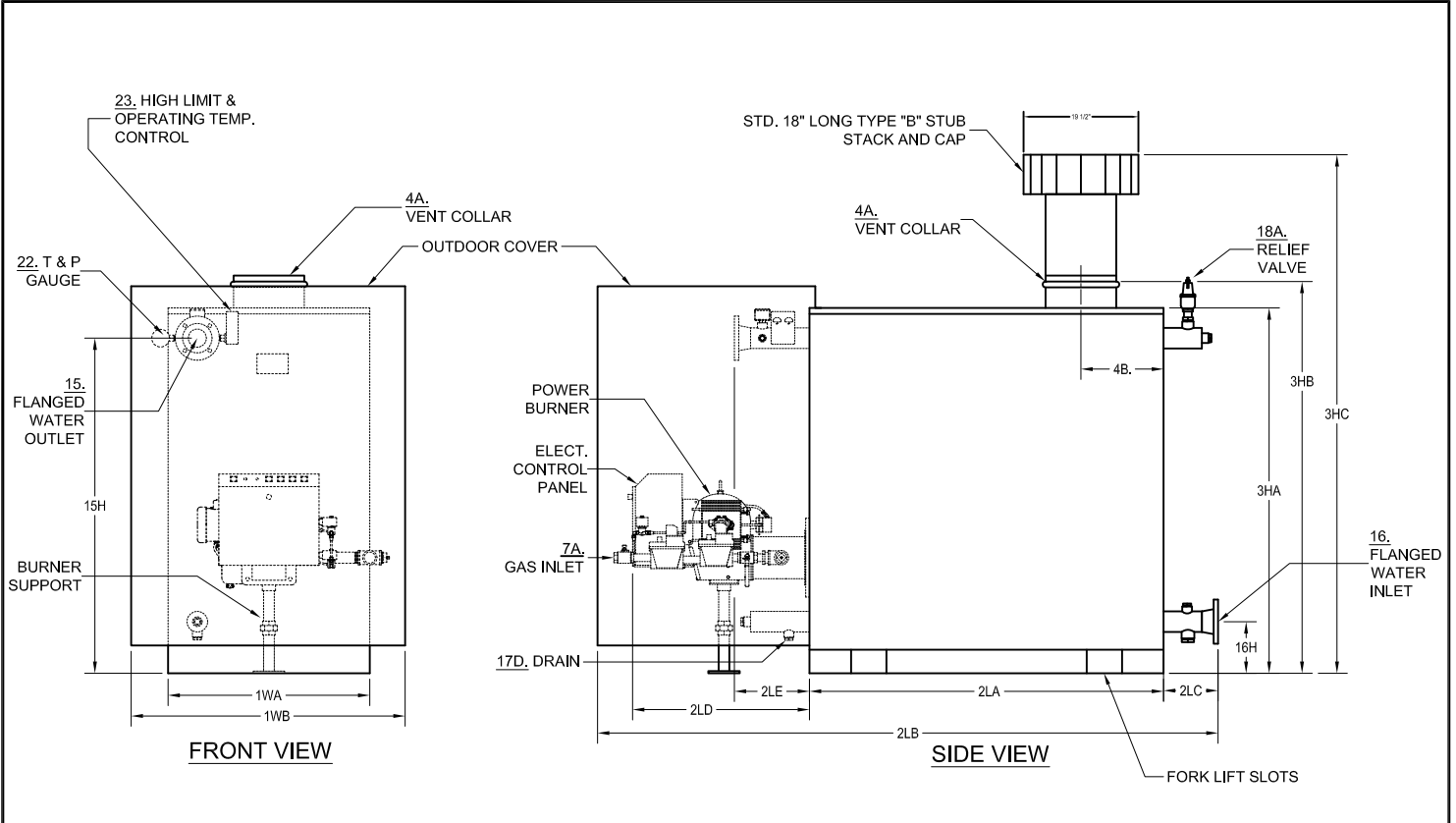


PARKER BOILER WATER WALL HOT WATER BOILERS
 POWER GAS, OIL, COMBINATION OR LOW NOX FIRED
 OUTDOOR MODELS *672R TO *3120R

SPEC. SHEET D-204WW-IV-VI-E
 1A0



NO.	ITEM	" * " = G(gas), O (oil), GO (gas oil comb)	MODEL NO.	*672R	*1008R	*1536R	*2304R	*2640R	*3120R
A	BTU Input		1000's BTU/HR.	500	1008	1536	2000	2500	3080
B	BTU Output		1000's BTU/HR.	410	827	1260	1640	2050	2525
C	Heating Surface		SQ. FT.	93	140	187	234	294	358
1WA	Width of Cabinet		IN.	35	35	35	35	35	35
1WB	Width Overall Including Weather Cover		IN.	48	48	54	54	56	56
2LA	Length of Cabinet		IN.	32	47	56	68	83	101
2LB	Length Overall		IN.	79-1/2	92-1/2	107	118-1/2	133-1/2	151
2LC	Length of Back Header Flange Beyond Cabinet		IN.	9-1/2	7-1/2	9-1/2	9	9	8-1/2
2LD	Length of Burner Beyond Cabinet		IN.	31	31	34-1/2	34-1/2	34-1/2	34-1/2
2LE	Length of Front Header Flange Beyond Cabinet		IN.	13	13	13	13	14	14
3HA	Height of Cabinet		IN.	62	62	62	62	62	62
3HB	Height with Vent Collar		IN.	66-1/2	66-1/2	66-1/2	66-1/2	66-1/2	66-1/2
3HC	Height Overall Including STD. 18" Long Stub Stack & Cap.		IN.	91	94	95	98	99	101
4A.	Vent Collar Diameter		IN.	8	10	12	14	16	18
4B.	Vent Stack Location - From Rear of Boiler Cabinet		IN.	12	17-1/2	18-1/2	23	26	30
7A	Std. Nat. Gas Inlet Size, @ Inlet Supply Pressure; Min: 7" W.C.; Max: 14" W.C.		IN.	1	1-1/4	1-1/2	1-1/2	2	2
7B	Hi Pressure Natural Gas or LP Gas Inlet Size, Supply Pressure 1-5 PSI		IN.	1	1	1-1/2	1-1/2	1-1/2	2
8A	Oil Input Required @ Manuf.'s Capacity Rating (#2 Oil)		GPH.	3.5	7	10.5	14.5	17.5	22
8B	Oil Supply Line Size - Minimum for up to 30'		IN.	3/8	1/2	3/4	3/4	3/4	3/4
15 & 16	Hot Water Inlet & Outlet Size (CL. 150 Flanged)		IN.	3	3	3	3	3	3
15H	Hot Water Outlet Height from Floor		IN.	57	57	57	57	57	57
16H	Water Inlet height from Floor		IN.	8-3/4	8-3/4	8-3/4	8-3/4	8-3/4	8-3/4
17D	Drain Line Size Required		IN.	1	1	1	1	1	1
18AHP	Safety Relief Valve Size - 125 PSI (H-STAMP)		OUTLET IN.	3/4	3/4	1	1	1	1-1/4
18ALP	Safety Relief Valve Size - 30 PSI (H-STAMP)		OUTLET IN.	1	1-1/2	2	2	2-1/2	2-1/2
20A	POWER SPECIFICATIONS		VOLTAGE/Ph	115V/1Ph					230V/3Ph
20B	Controls (115V-1Ph-60Hz)		AMPS	5 AMPS					
21	Blower HP - *G (gas)		HP	1/3	1/3	1/2	1/2	3/4	1
	Water Capacity		GAL.	16	22	29	35	43	56
	Net Weight of Boiler		LBS.	1610	1860	2210	2540	2990	3640
	Crated Shipping Weight of Boiler- Approximate		LBS.	1810	2110	2480	2840	3320	4090

Recommended Clearances for Access: Inspection Doors 18"; Controls 24"; Electrical Panel 30"; 3Ph (36"); Additional space may be required by Local Codes.

Notes: Due to continuous improvement, specifications are subject to change without notice.

D-204ww IV-VI-E.DWG