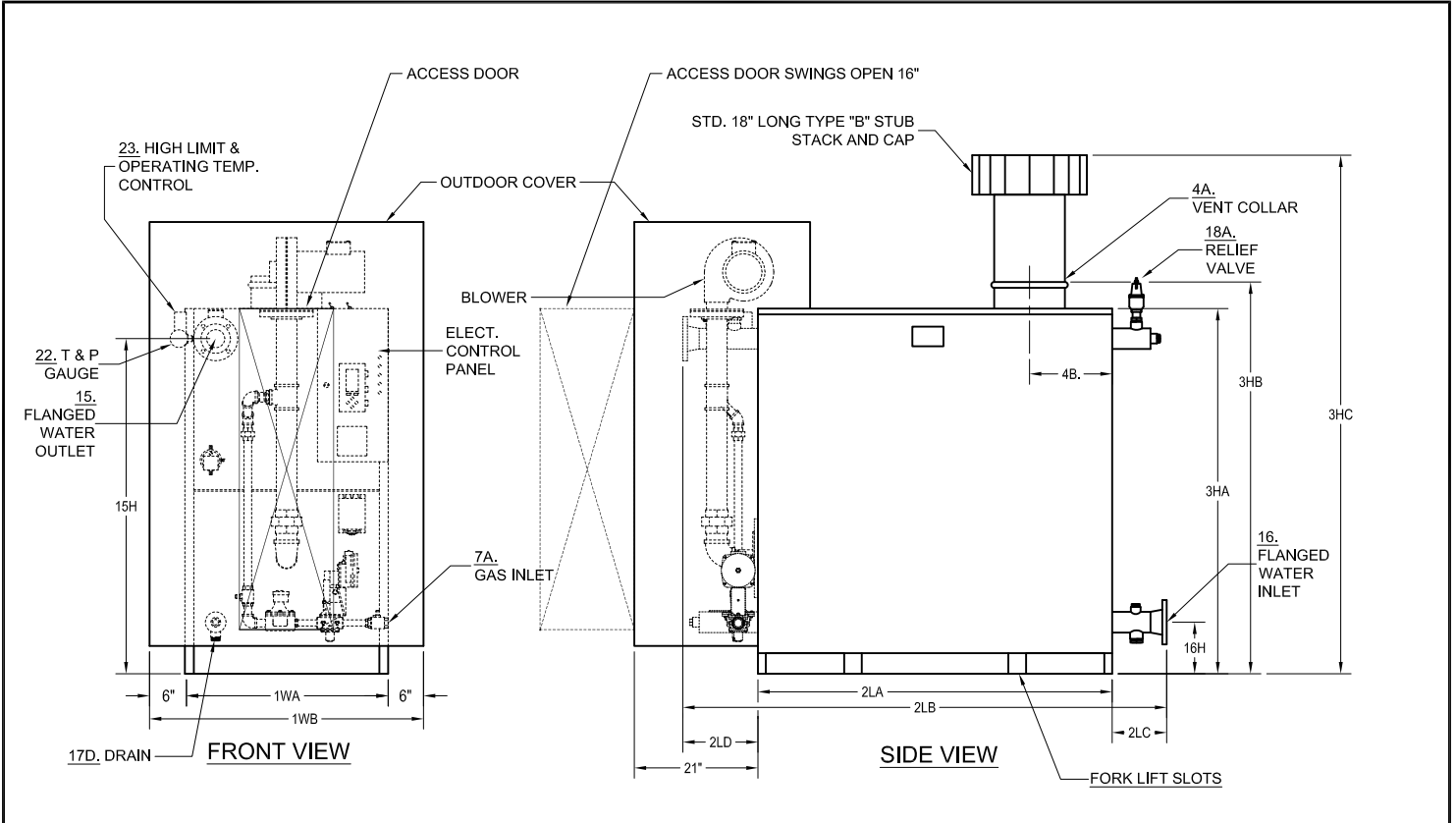


OUTDOOR W/TYPE "B" STUB STACK  
 PARKER BOILER WATER WALL HOT WATER BOILERS  
 LOW NOX FIRED  
 MODELS G672R(L) TO G3120R(L)

SPEC. SHEET D-204WW-R(L)-IE

1A0



NO.	ITEM	MODEL NO.	G672R(L)	G1008R(L)	G1536R(L)	G2304R(L)	G2640R(L)	G3120R(L)
A	BTU Input	1000's BTU/HR.	672	1008	1536	2000	2640	3120
B	BTU Output	1000's BTU/HR.	551	827	1260	1640	2165	2559
C	Heating Surface	SQ. FT.	93	140	187	234	294	358
1WA	Width of Cabinet	IN.	35	35	35	35	35	35
1WB	Width Overall including Weather Cover	IN.	47	47	47	47	47	47
2LA	Length of Cabinet	IN.	32	47	56	68	83	101
2LB	Minimum Header Length	IN.	54-1/2	67-1/2	78-1/2	90	106	123-1/2
2LC	Length of Back Beyond Cabinet	IN.	9-1/2	7-1/2	9-1/2	9	9	8-1/2
2LD	Length of Front Beyond Cabinet (21" Beyond Weather Cover)	IN.	13	13	13	13	14	14
3HA	Height of Cabinet	IN.	62	62	62	62	62	62
3HB	Height with Vent Collar	IN.	66-1/2	66-1/2	66-1/2	66-1/2	66-1/2	66-1/2
3HC	Height Overall Including STD. 18" Long Stub Stack & Cap.	IN.	91	94	95	98	99	101
4A.	Vent Collar Diameter	IN.	8	10	12	14	16	18
4B.	Vent Stack Location - From Rear of Boiler Cabinet	IN.	12	17-1/2	18-1/2	23	26	30
7A	Std. Nat. Gas Inlet Size, @ Inlet Supply Pressure; Min: 7" W.C.; Max: 14" W.C.	IN.	1	1	1-1/2	1-1/2	2	2
7B	Hi Pressure Natural Gas or LP Gas Inlet Size, Supply Pressure 1-5 PSI	IN.	1	1	1-1/2	1-1/2	1-1/2	2
15 & 16	Hot Water Inlet & Outlet Size (CL. 150 Flanged)	IN.	3	3	3	3	3	3
15H	Hot Water Outlet Height from Floor	IN.	57	57	57	57	57	57
16H	Water Inlet height from Floor	IN.	8-3/4	8-3/4	8-3/4	8-3/4	8-3/4	8-3/4
17D	Drain Line Size Required	IN.	1	1	1	1	1	1
18AHP	Safety Relief Valve Size - 125 PSI (H-STAMP)	OUTLET IN.	3/4	3/4	1	1	1	1-1/4
18ALP	Safety Relief Valve Size - 30 PSI (H-STAMP)	OUTLET IN.	1	1-1/2	2	2	2-1/2	2-1/2
20A	POWER SPECIFICATIONS	VOLTAGE/PH	115V/1PH				230V/3PH	
20B	Controls (115V-1Ph-60Hz)	AMPS	5 AMPS					
21	Blower HP	HP	1/2	1/2	1	1	2	3
	Water Capacity	GAL.	16	22	29	35	43	56
	Net Weight of Boiler	LBS.	1590	1840	2170	2500	2950	3750
	Crated Shipping Weight of Boiler- Approximate	LBS.	1790	2090	2440	2800	3280	4150

Recommended Clearances for Access: Inspection Doors 18"; Controls 24"; Electrical Panel 30"; 3Ph (36") ; Additional space may be required by Local Codes. Units up to 2,000,000 BTUH are SCAQMD 1146.2 certified.

Notes: Due to continuous improvement, specifications are subject to change without notice.