

STANDARD VERTICAL AIR SEPARATOR TANK
SIZE AND DIMENSIONS

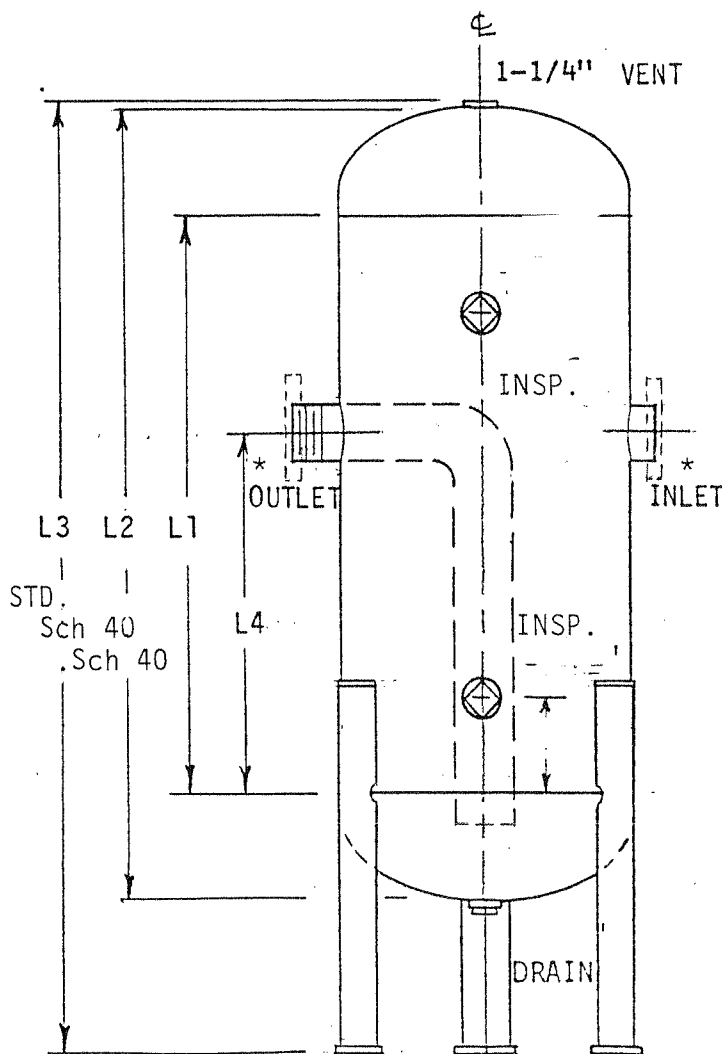
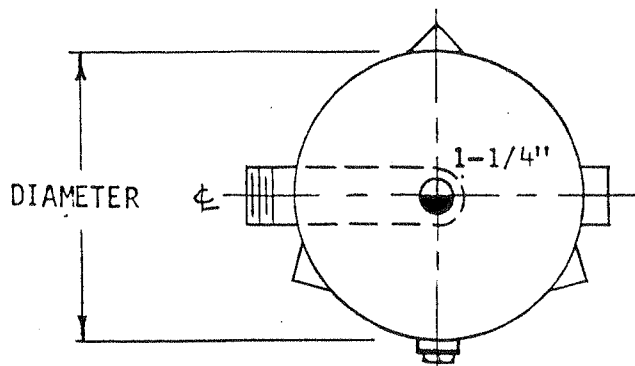
ITEM	DATA
GALLON CAPACITY APPROX.	15
DIAMETER SHELL	12"
L1 SHELL LENGTH	24"
L2 HEIGHT WITH HEADS	33"
L3 HEIGHT WITH LEGS	41"
L4 INLET/OUTLET LOCATION	18"
SHELL THICKNESS & MATERIAL	3/16" *
HEAD THICKNESS & MATERIAL	3/16" **
A.S.M.E. WORKING PRESSURE	150 PSI
INLET SIZE	***
OUTLET SIZE	***
NATIONAL BOARD REGISTRATION	YES
DESIGN TEMPERATURE	33-450° F
TANK LINING	NO- BARE STEEL

NOTE: All FPT Openings are Tank Flgs.
All pipe 1½" & less is Blk. welded
All pipe 2" & larger is Blk. Smls.
All W.N. Flgs. or S.O. Flgs. if
furnished, are SA-105 CL-150.

***INLET & OUTLET SIZE AND TYPE ARE AS
SPECIFIED ON ORDER.

* SHELL MAT'L.

** HEAD MAT'L:



USED ON HOT WATER HEATING SYSTEMS

PART NAME PARKER A.S.M.E. AIR SEPARATOR TANK

FOR

DR. MB DATE 1/96

CH.
APPROVED

PARKER BOILER CO.

5930 BANDINI BLVD.
LOS ANGELES, CALIF. 90040-2999

SCALE NONE

SUPERCEDES NO. 1/89

DWG. NO. TAV1224-XX