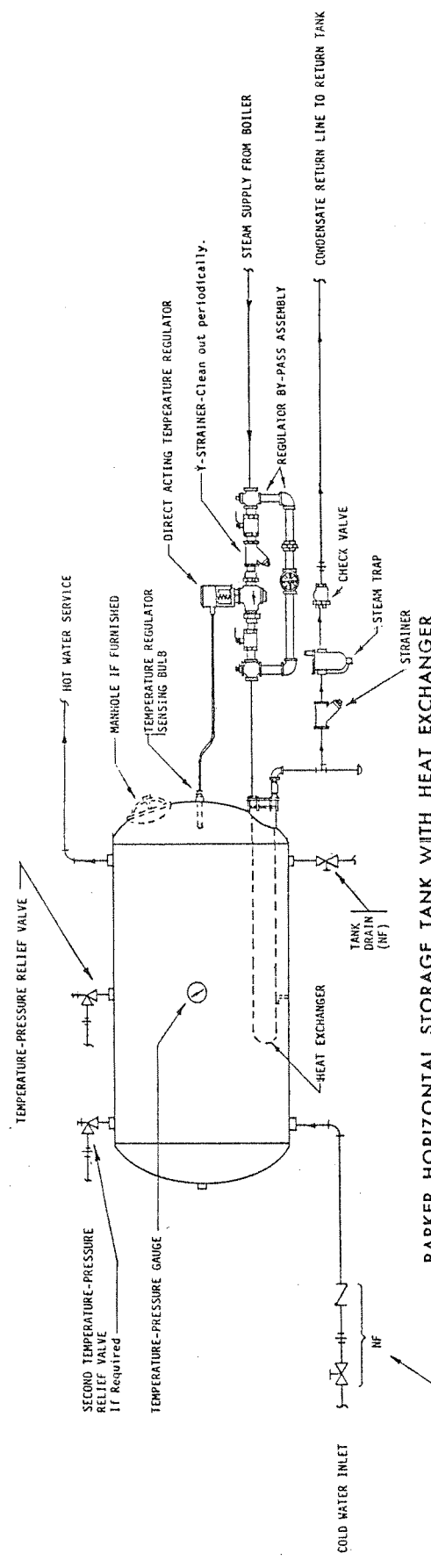


**PARKER COPPER TUBE STEAM HEAT EXCHANGER AND ACCESSORIES
SPECIFICATIONS FOR 120°F WATER TEMPERAURE RISE**

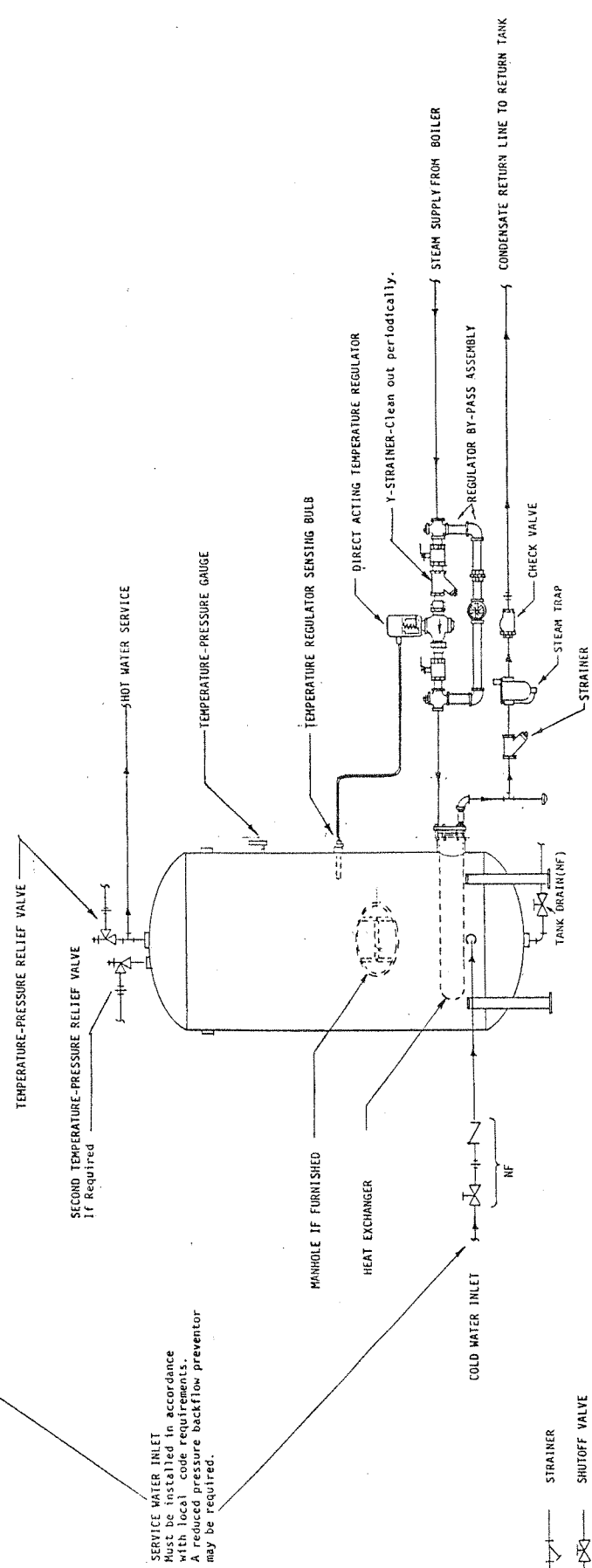
MODEL NO. - 75 PSI STEAM		100-S75	200-S75	300-S75	400-S75	500-S75	750-S75
7							
5	CAPACITY IN G.P.H. 120°F RISE	100	200	300	400	500	750
	BOILER H.P. REQUIRED	2.9	5.8	8.7	11.6	14.5	22
P	STEAM INLET SIZE	1/2"	1/2"	1/2"	3/4"	3/4"	1"
S	REGULATOR BYPASS VALVE ASSEM. SIZE	1/2"	1/2"	1/2"	3/4"	3/4"	1"
I	STEAM TRAP, STRAINER, CHECK VALVE SIZE	3/4"	3/4"	3/4"	3/4"	3/4"	1-1/4"
	T&P RELIEF VALVE SIZE - INLET	1"	1"	1"	1"	1"	1"
MODEL NO. - 10 PSI STEAM		50-S10	100-S10	150-S10	200-S10	250-S10	400-S10
1							
0	CAPACITY IN G.P.H. 120°F RISE	50	100	150	200	250	400
	BOILER H.P. REQUIRED	1.6	3.2	4.8	6.4	8	12
P	STEAM INLET SIZE	1/2"	3/4"	1"	1"	1"	1-1/4"
S	REGULATOR-BYPASS VALVE ASSEM. SIZE	1/2"	3/4"	1"	1"	1"	1-1/4"
I	STEAM TRAP, STRAINER, CHECK VALVE SIZE	3/4"	3/4"	1"	1"	1"	1-1/4"
	T&P RELIEF VALVE SIZE - INLET	1"	1"	1"	1"	1"	1"
	SQUARE FEET OF HEATING SURFACE	2	4	6	8	10	15
	EXCHANGER SIZE - NOZZ. DIA & LENGTH	6X24"	6X24"	6X24"	6X30"	6X36"	8X36"
	NUMBER OF TUBES	3	5	7	7	7	11
	MINIMUM DIA. VERTICAL TANK REQUIRED	24	24	24	30	36	36

MODEL NO. - 75 PSI STEAM		1000-S75	1250-S75	1500-S75	1750-S75	2000-S75	2500-S75
7							
5	CAPACITY IN GPH 120°F RISE	1000	1250	1500	1750	2000	2500
	BOILER H.P. REQUIRED	29	36	43.5	51	58	72.5
P	STEAM INLET SIZE	1"	1"	1-1/4"	1-1/4"	1-1/4"	1-1/4"
S	REGULATOR-BYPASS VALVE ASSEM. SIZE	1"	1"	1-1/4"	1-1/4"	1-1/4"	1-1/4"
I	STEAM TRAP, STRAINER, CHECK VALVE SIZE	1-1/2"	1-1/2"	2"	2"	2"	2"
	T&P RELIEF VALVE SIZE - INLET	1"	1"	1"	(2) 1"	(2) 1"	(2) 1"
MODEL NO. - 10 PSI STEAM		500-S10	650-S10	800-S10	-	1000-S10	-
1							
0	CAPACITY IN G.P.H. 120°F RISE	500	650	800		1000	
	BOILER H.P. REQUIRED	16	20	24		30	
P	STEAM INLET SIZE	1-1/2"	2"	2"		2"	
S	REGULATOR-BYPASS VALVE ASSEM. SIZE	1-1/2"	2"	2"		2"	
I	STEAM TRAP, STRAINER, CHECK VALVE SIZE	1-1/4"	1-1/2"	1-1/2"		1-1/2"	
	T&P RELIEF VALVE SIZE - INLET	1"	1"	1"		1"	
	SQUARE FEET OF HEATING SURFACE	20	25	30	35	40	50
	EXCHANGER SIZE - NOZZ. DIA & LENGTH	8X42"	8X54"	8X60"	8X72"	8X84"	8X108"
	NUMBER OF TUBES	13	13	13	13	13	13
	MINIMUM DIA. VERTICAL TANK REQUIRED	42	54	60	72	84	108

PARKER STEAM HEAT EXCHANGER AND STORAGE TANK
INSTALLATION DRAWING AND PIPING DETAIL



PARKER HORIZONTAL STORAGE TANK WITH HEAT EXCHANGER



PARKER VERTICAL STORAGE TANK WITH HEAT EXCHANGER

SERVICE WATER INLET
Must be installed in accordance
with local code requirements.
A reduced pressure backflow preventor
may be required.

- STRAINER
- X— SHUTOFF VALVE
- |— CHECK VALVE
- |— UNION
- (NF) NOT FURNISHED

OTHER ITEMS OF TRIM FURNISHED ONLY AS SPECIFIED ON ORDER.

USED ON	PARKER STEAM HEAT EXCHANGER	PART NAME	INSTALLATION DRAWING
FOR	HORIZONTAL AND VERTICAL STORAGE TANKS WITH HEAT EXCHANGERS		
DR.	H.J.L.	DATE	07/18
CHK.			
APPROVED			
PARKER BOILER CO.			SCALE NONE
5600 BAYVIEW BLVD.			SUPPLEMENT NO. 1,771
LOS ANGELES, CALIF. 90040-2999			DWG. NO. 511-514 INST 1