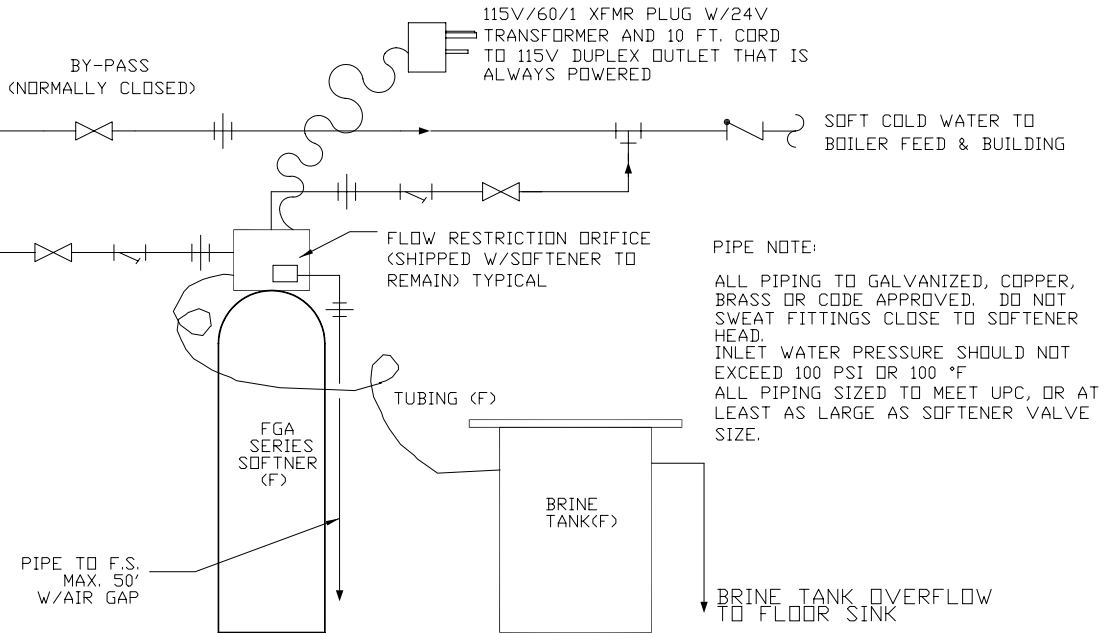


CAUTION:
IF WATER PRESSURE
IS OVER 75 PSI INSTALL
PRESSURE REDUCING
VALVE (PRV)

COLD CITY
WATER INLET
W/R.P.B.F.P.

3/4" 100 PSI
RELIEF VALVE
ON 1" LINE FOR
FGA-45 & FGA-90

CAUTION:
INSTALL VACUUM BREAKER
WHEN SOFTNER IS INSTALLED
ON SECOND FLOOR OR ABOVE
INSTALLATION OF WATER INLET
(SEE DETAIL BELOW)



PIPE NOTE:

ALL PIPING TO GALVANIZED, COPPER,
BRASS OR CODE APPROVED. DO NOT
SWEAT FITTINGS CLOSE TO SOFTENER
HEAD.
INLET WATER PRESSURE SHOULD NOT
EXCEED 100 PSI OR 100 °F
ALL PIPING SIZED TO MEET UPC, OR AT
LEAST AS LARGE AS SOFTENER VALVE
SIZE.

SINGLE SOFTENER INSTALLATION SCHEMATIC-FRONT ELEVATION

DUAL SOFTENER INSTALLATION SCHEMATIC-FRONT ELEV.

CAUTION:
IF WATER PRESSURE IS OVER 75 PSI INSTALL
PRESSURE REDUCING VALVE (PRV)

COLD CITY
WATER INLET
W/R.P.B.F.P.

CAUTION:
INSTALL VACUUM
BREAKER WHEN
SOFTNER IS INSTALLED
ON SECOND FLOOR
OR ABOVE INSTALLATION
OF WATER INLET

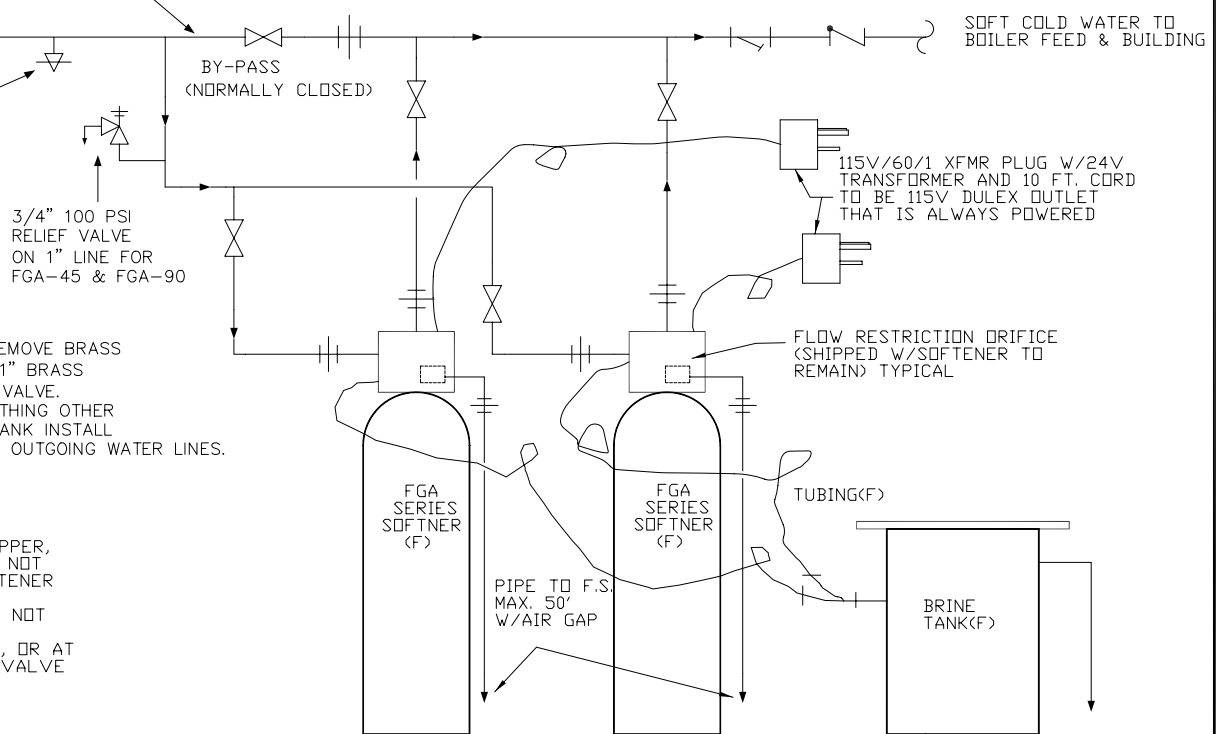
3/4" 100 PSI
RELIEF VALVE
ON 1" LINE FOR
FGA-45 & FGA-90

NOTES:

1. SOFTENERS WITH 2" VALVES: REMOVE BRASS CAP ON TOP, REPLACE WITH A 1" BRASS COUPLING & 1" 100 PSI RELIEF VALVE.
2. IF SOFTENER IS USED FOR ANYTHING OTHER THAN THE BOILER FEEDWATER TANK INSTALL FLEX HOSE ON THE INCOMING & OUTGOING WATER LINES.

PIPE NOTE:

ALL PIPING TO GALVANIZED, COPPER,
BRASS OR CODE APPROVED. DO NOT
SWEAT FITTINGS CLOSE TO SOFTENER
HEAD.
INLET WATER PRESSURE SHOULD NOT
EXCEED 100 PSI OR 100 °F
ALL PIPING SIZED TO MEET UPC, OR AT
LEAST AS LARGE AS SOFTENER VALVE
SIZE.



(F) FURNISHED

REDUCED PRESSURE BACK FLOW PREVENTOR

MANUAL SHUTOFF VALVE

BRASS Y-STRAINER

VACUUM BREAKER

CHECK VALVE

BRINE TANK OVERFLOW
TO FLOOR SINK

301FGA.DWG

USED ON PARKER STEAM AND HOT WATER SYSTEMS

PART NAME RECOMMENDED PIPING/INSTALLATION

FOR PARKER FGA SERIES FIBERGLASS AUTOMATIC WATER SOFTENERS, TIMER SYSTEMS

DR. RPC/NGA DATE OEO

PARKER BOILER CO.

SCALE NONE

CH.

5930 BANDINI BLVD.

SUPERCEDES NO. 6A

APPROVED

LOS ANGELES, CA 90040

DWG. NO. A-301-FGA-INST