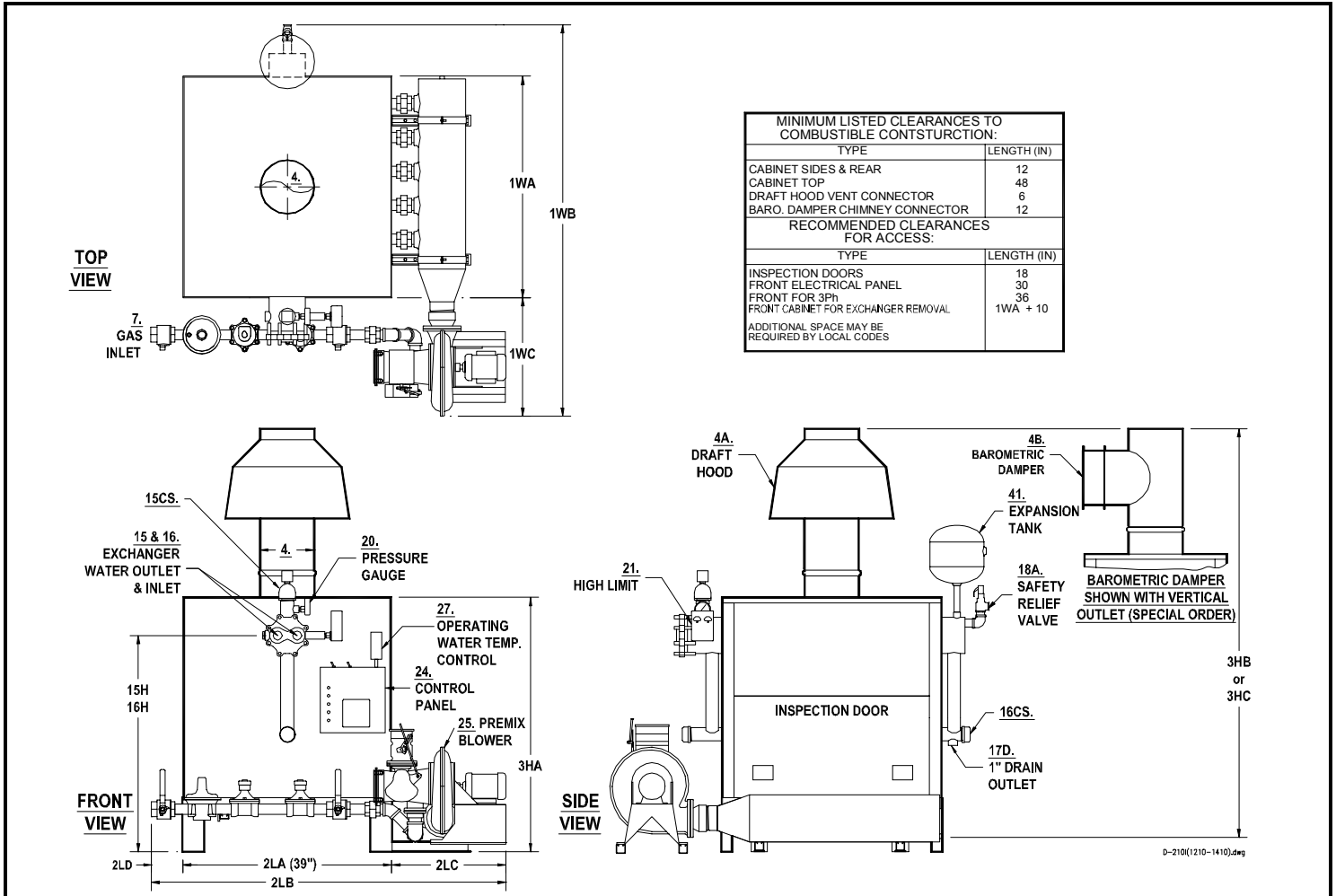


PARKER LOW NOx INDIRECT FIRED WATER HEATERS
WH1210L TO WH1410L – PREMIX BLOWER GAS FIRED



MINIMUM LISTED CLEARANCES TO COMBUSTIBLE CONSTRUCTION:	
TYPE	LENGTH (IN)
CABINET SIDES & REAR	12
CABINET TOP	48
DRAFT HOOD VENT CONNECTOR	6
BARO. DAMPER CHIMNEY CONNECTOR	12
RECOMMENDED CLEARANCES FOR ACCESS:	
TYPE	LENGTH (IN)
INSPECTION DOORS	18
FRONT ELECTRICAL PANEL	30
FRONT FOR 3PH	36
FRONT CABINET FOR EXCHANGER REMOVAL	1WA + 10

ADDITIONAL SPACE MAY BE REQUIRED BY LOCAL CODES

NO.		MODEL NO.	WH1210L	WH1410L
A	BTU Input	1000's BTU/HR.	1210	1410
B	BTU Output	1000's BTU/HR.	968	1128
C	Heating Surface	SQ. FT.	127.5	160
D	Output - 60 Degree Rise	G.P.H.	1935	2253
E	Output - 100 Degree Rise	G.P.H.	1161	1352
1WA	Width of Cabinet Only	IN.	41	49
1WB	Width Overall Including Controls	IN.	71	79
1WC	Width of Blower Beyond Cabinet (Approx.) **	IN.	20	20
2LA	Length of Cabinet Only	IN.	39	39
2LB	Length Overall	IN.	63	63
2LC	Length of Premix Manifold Beyond Cabinet	IN.	9	9
2LD	Length of Gas Inlet Beyond Cabinet (Approx.)	IN.	15	15
3HA	Height of Cabinet Only	IN.	44	44
3HB	Height Overall Including Draft Hood - (Standard)	IN.	82	86
3HC	Ht. Overall Inclu. Baro. Damper (Vert. /Horiz. Outlet) - (Spec.Order)	IN.	71/67	73/71
4A	Vent Stack Diameter with Draft Hood-(Standard)	IN.	14	16
4B	Vent Stack Diameter with Barometric Damper	IN.	12	14
7A / 7A1	Std. Nat. Gas Inlet Size/Supply Press; Max: 14" WC; Min.:7" WC	IN.	1-1/2	1-1/2
7A2	Nat. Gas Manifold Pressure at Burner	IN. WC	4	4
7B	Hi Press. Nat. & Propane Gas Inlet Size/(Supply Press. 1-5 PSI)	IN.	1-1/2	1-1/2
7B1	Propane Manifold Pressure at Burner	IN. WC	18	18
7H	Gas Inlet Height From Floor	IN.	6	6
15&16	Exchanger Water Outlet and Inlet Size	IN.	2	2
15H&16H	Exchanger Water Outlet and Inlet Height From Floor	IN.	35	35
15&16CS	Outlet & Inlet Size for Closed System Heating	IN.	2-1/2	2-1/2
18AHP	Safety Relief Valve Drain Size- 125 PSI	OUTLET IN.	3/4	3/4
18ALP	Safety Relief Valve Drain Size- 30 PSI	OUTLET IN.	1-1/4	1-1/2
24	Power Specifications		(1) 115V-1 Phase	
24B	Controls \ (1PH, 60 Hz)	AMPS	5 AMPS	
25	Blower HP **	HP	1/3 HP	
J	Water Capacity	GAL.	21	25
K	Net Weight of Boiler	LBS.	1780	2100
L	Domestic Crated Shipping Weight of Boiler	LBS.	1920	2250

Note: All of the above dimensions are for a standard trim model. Due to continuous improvements, specifications are subject to change without notice.

** - is based on 2 Stage or Modulating Models.

