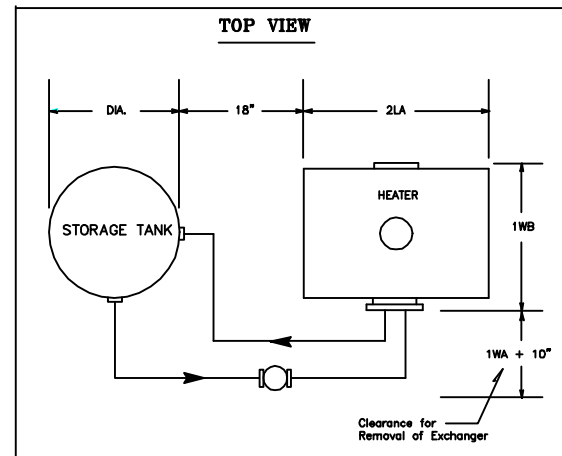
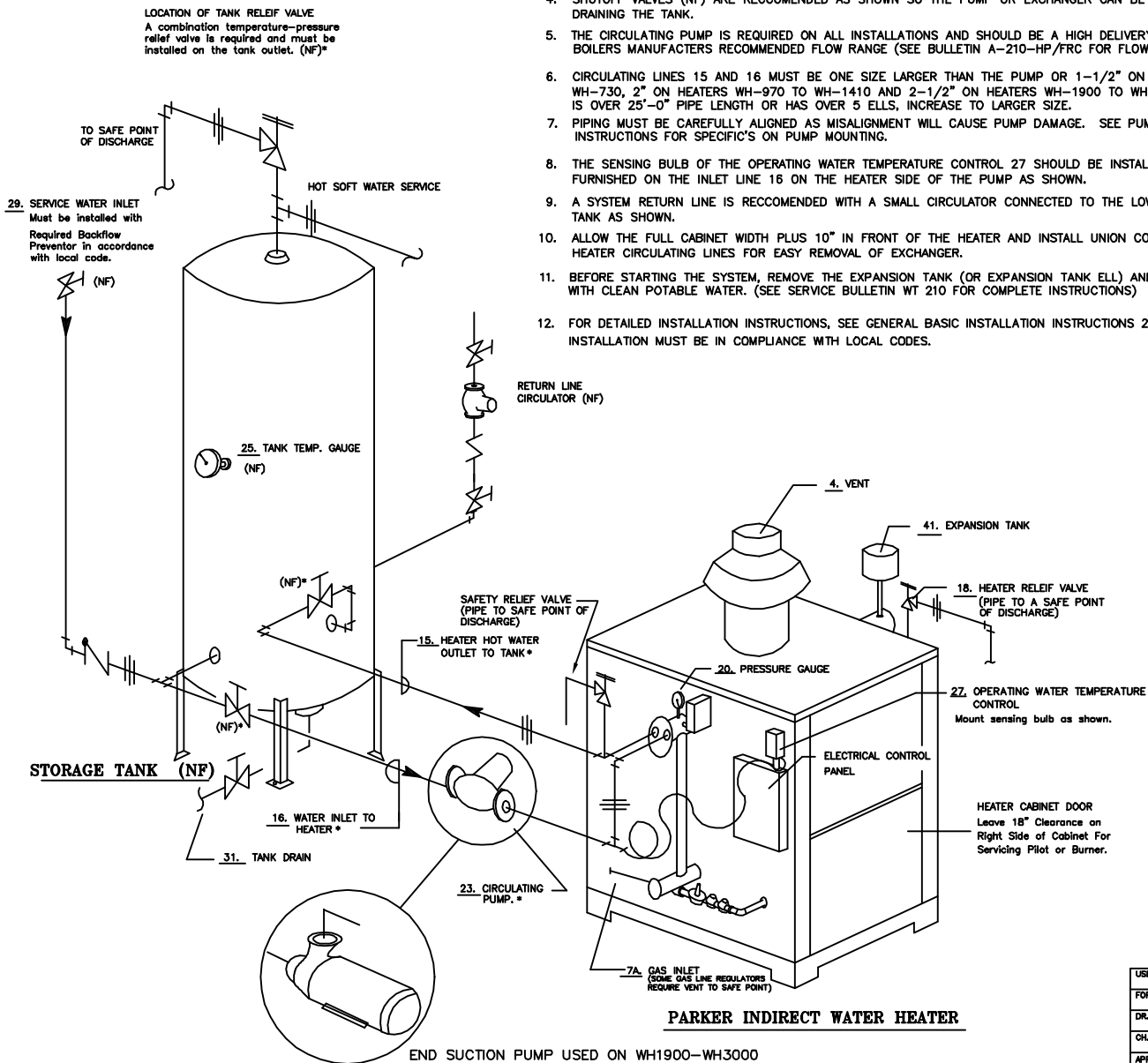


## IMPORTANT INSTRUCTIONS

1. THE COLD WATER ENTERING THE SYSTEM SHOULD BE CONNECTED INTO THE WATER INLET LINE 16 ON THE SUCTION SIDE OF THE CIRCULATING PUMP AS SHOWN.
2. CIRCULATING LINES 15 AND 16 MUST BE CONNECTED TO OPENINGS PROVIDED NEAR BOTTOM OF TANK. INSTALL PUMP ON WATER INLET LINE 16 WITH FLOW ARROW TOWARD HEATER AS SHOWN WITH A MINIMUM OF 2'-0" STRAIGHT PIPE RUN ON SUCTION SIDE.
3. WATER INLET 16 AND OUTLET 15 MAY BE REVERSED AT HEAT EXCHANGER FOR PIPING CONVENIENCE.
4. SHUTOFF VALVES (NF) ARE RECOMMENDED AS SHOWN SO THE PUMP OR EXCHANGER CAN BE SERVICED WITHOUT DRAINING THE TANK.
5. THE CIRCULATING PUMP IS REQUIRED ON ALL INSTALLATIONS AND SHOULD BE A HIGH DELIVERY MODEL TO MEET THE BOILERS MANUFACTURERS RECOMMENDED FLOW RANGE (SEE BULLETIN A-210-HP/FRC FOR FLOW RATES)
6. CIRCULATING LINES 15 AND 16 MUST BE ONE SIZE LARGER THAN THE PUMP OR 1-1/2" ON HEATERS WH-300 TO WH-730, 2" ON HEATERS WH-970 TO WH-1410 AND 2-1/2" ON HEATERS WH-1900 TO WH-3000. IF EITHER LINE IS OVER 25'-0" PIPE LENGTH OR HAS OVER 5 ELLS, INCREASE TO LARGER SIZE.
7. PIPING MUST BE CAREFULLY ALIGNED AS MISALIGNMENT WILL CAUSE PUMP DAMAGE. SEE PUMP MFG.'S INTALLATION INSTRUCTIONS FOR SPECIFIC'S ON PUMP MOUNTING.
8. THE SENSING BULB OF THE OPERATING WATER TEMPERATURE CONTROL 27 SHOULD BE INSTALLED IN THE WELL FURNISHED ON THE INLET LINE 16 ON THE HEATER SIDE OF THE PUMP AS SHOWN.
9. A SYSTEM RETURN LINE IS RECOMMENDED WITH A SMALL CIRCULATOR CONNECTED TO THE LOWER PORTION OF THE TANK AS SHOWN.
10. ALLOW THE FULL CABINET WIDTH PLUS 10" IN FRONT OF THE HEATER AND INSTALL UNION CONNECTIONS IN THE HEATER CIRCULATING LINES FOR EASY REMOVAL OF EXCHANGER.
11. BEFORE STARTING THE SYSTEM, REMOVE THE EXPANSION TANK (OR EXPANSION TANK ELL) AND FILL THE HEATER WITH CLEAN POTABLE WATER. (SEE SERVICE BULLETIN WT 210 FOR COMPLETE INSTRUCTIONS)
12. FOR DETAILED INSTALLATION INSTRUCTIONS, SEE GENERAL BASIC INSTALLATION INSTRUCTIONS 210. ENTIRE INSTALLATION MUST BE IN COMPLIANCE WITH LOCAL CODES.



- SHUTOFF VALVE
- CHECK VALVE
- UNION
- TEE
- (NF) NOT FURNISHED
- (NF)\* NOT FURNISHED UNLESS PURCHASED W/SYSTEM

### PARKER INDIRECT WATER HEATER

END SUCTION PUMP USED ON WH1900-WH3000

A211INST1.DWG

USED ON		PARKER INDIRECT HEATER		PART NAME		PIPING SCHEMATIC	
FOR		HOT WATER SYSTEM WITH PARKER DIRECT HEATER, STORAGE TANK AND ACCESSORIES					
DR.	M.I.L.	DATE	PARKER BOILER CO.		SCALE		NONE
CH.		7/21/94	5930 BANDINI BLVD.		SUPERCEDES NO.		1/20/94
APPROVED			LOS ANGELES, CALIF. 90040		DWG. NO.		A-211-INST1