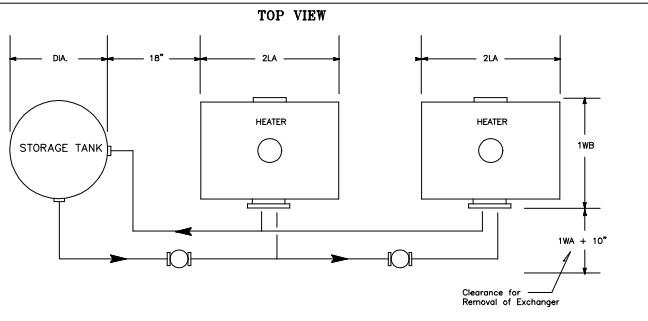
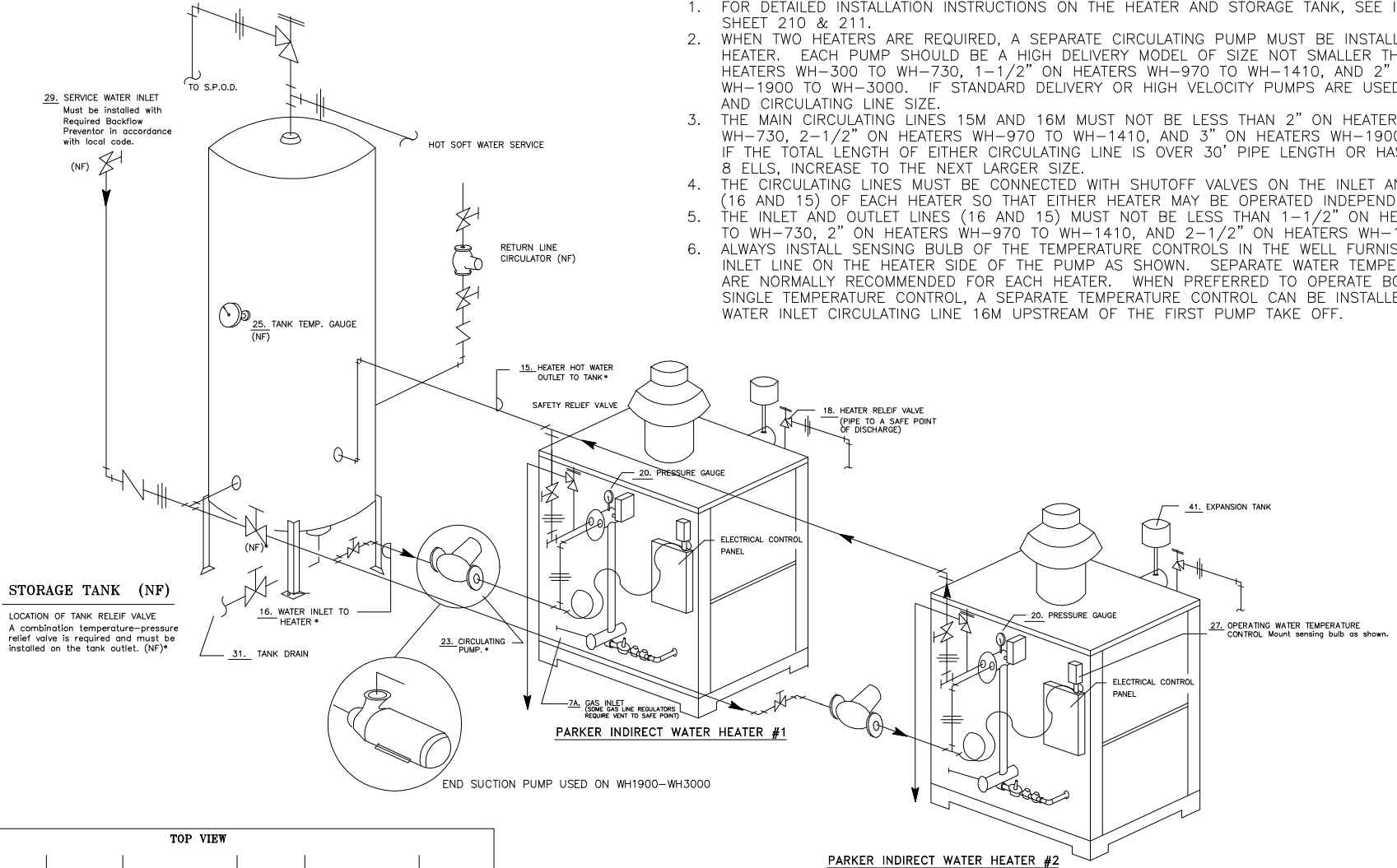


DUAL PARKER INDIRECT GAS FIRED HOT WATER HEATERS, DUAL HEATER HOT WATER SYSTEM

IMPORTANT INSTRUCTIONS

- FOR DETAILED INSTALLATION INSTRUCTIONS ON THE HEATER AND STORAGE TANK, SEE INSTRUCTION SHEET 210 & 211.
- WHEN TWO HEATERS ARE REQUIRED, A SEPARATE CIRCULATING PUMP MUST BE INSTALLED FOR EACH HEATER. EACH PUMP SHOULD BE A HIGH DELIVERY MODEL OF SIZE NOT SMALLER THAN 1-1/4" ON HEATERS WH-300 TO WH-730, 1-1/2" ON HEATERS WH-970 TO WH-1410, AND 2" ON HEATERS WH-1900 TO WH-3000. IF STANDARD DELIVERY OR HIGH VELOCITY PUMPS ARE USED, INCREASE PUMP AND CIRCULATING LINE SIZE.
- THE MAIN CIRCULATING LINES 15M AND 16M MUST NOT BE LESS THAN 2" ON HEATERS WH-300 TO WH-730, 2-1/2" ON HEATERS WH-970 TO WH-1410, AND 3" ON HEATERS WH-1900 TO WH-3000. IF THE TOTAL LENGTH OF EITHER CIRCULATING LINE IS OVER 30' PIPE LENGTH OR HAS MORE THAN 8 ELLS, INCREASE TO THE NEXT LARGER SIZE.
- THE CIRCULATING LINES MUST BE CONNECTED WITH SHUTOFF VALVES ON THE INLET AND OUTLET (16 AND 15) OF EACH HEATER SO THAT EITHER HEATER MAY BE OPERATED INDEPENDENTLY.
- THE INLET AND OUTLET LINES (16 AND 15) MUST NOT BE LESS THAN 1-1/2" ON HEATERS WH-300 TO WH-730, 2" ON HEATERS WH-970 TO WH-1410, AND 2-1/2" ON HEATERS WH-1900 TO WH-3000.
- ALWAYS INSTALL SENSING BULB OF THE TEMPERATURE CONTROLS IN THE WELL FURNISHED ON THE INLET LINE ON THE HEATER SIDE OF THE PUMP AS SHOWN. SEPARATE WATER TEMPERATURE CONTROLS ARE NORMALLY RECOMMENDED FOR EACH HEATER. WHEN PREFERRED TO OPERATE BOTH HEATERS ON A SINGLE TEMPERATURE CONTROL, A SEPARATE TEMPERATURE CONTROL CAN BE INSTALLED IN THE MAIN WATER INLET CIRCULATING LINE 16M UPSTREAM OF THE FIRST PUMP TAKE OFF.



- SHUTOFF VALVE
- CHECK VALVE
- UNION
- TEE
- (NF) NOT FURNISHED
- (NF)* NOT FURNISHED UNLESS PURCHASED W/SYSTEM

211INST3.DWG

USED ON	PARKER INDIRECT HEATER	PART NAME	PIPING SCHEMATIC
FOR	DUAL HOT WATER SYSTEM WITH PARKER INDIRECT HEATER AND STORAGE TANK		
DR.	RPC	DATE	7D
CH.		PARKER BOILER CO. 5930 BANDINI BLVD. LOS ANGELES, CALIF. 90040	
APPROVED		SCALE	NONE
		SUPERCEDES NO.	4D
		DWG. NO.	A-211-INST3