
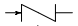

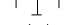
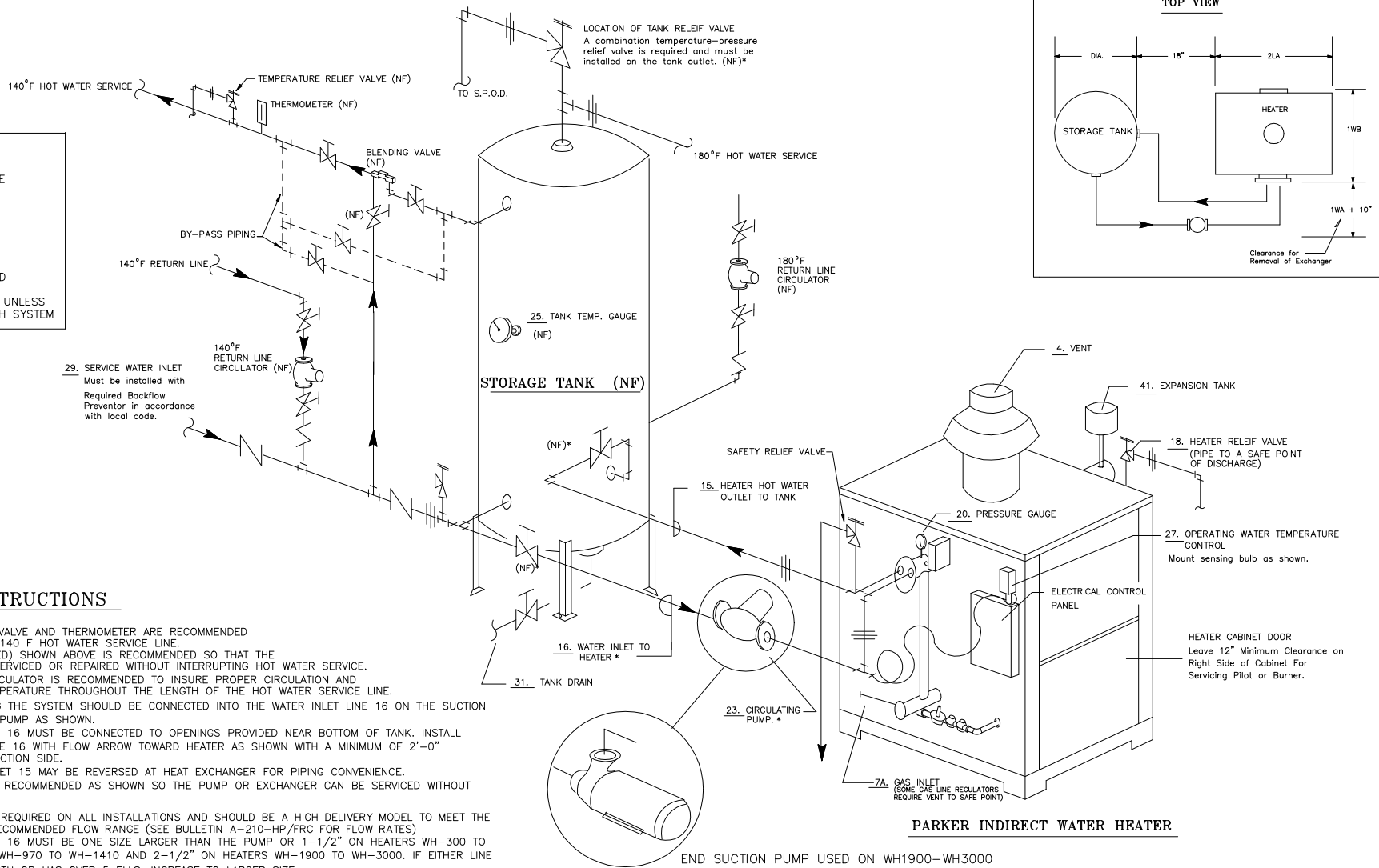


PARKER INDIRECT GAS FIRED HOT WATER HEATER DUAL TEMPERATURE HOT WATER SYSTEM

LEGEND	
	SHUTOFF VALVE
	CHECK VALVE
	UNION
	TEE
(NF)	NOT FURNISHED
(NF)*	NOT FURNISHED UNLESS PURCHASED WITH SYSTEM



IMPORTANT INSTRUCTIONS

1. THE TEMPERATURE RELIEF VALVE AND THERMOMETER ARE RECOMMENDED TO BE INSTALLED ON THE 140 F HOT WATER SERVICE LINE.
2. THE BYPASS PIPING (DOTTED) SHOWN ABOVE IS RECOMMENDED SO THAT THE BLENDING VALVE MAY BE SERVICED OR REPAIRED WITHOUT INTERRUPTING HOT WATER SERVICE.
3. A 140 F RETURN LINE CIRCULATOR IS RECOMMENDED TO INSURE PROPER CIRCULATION AND MAINTAIN THE DESIRED TEMPERATURE THROUGHOUT THE LENGTH OF THE HOT WATER SERVICE LINE.
4. THE COLD WATER ENTERING THE SYSTEM SHOULD BE CONNECTED INTO THE WATER INLET LINE 16 ON THE SUCTION SIDE OF THE CIRCULATING PUMP AS SHOWN.
5. CIRCULATING LINES 15 AND 16 MUST BE CONNECTED TO OPENINGS PROVIDED NEAR BOTTOM OF TANK. INSTALL PUMP ON WATER INLET LINE 16 WITH FLOW ARROW TOWARD HEATER AS SHOWN WITH A MINIMUM OF 2'-0" STRAIGHT PIPE RUN ON SUCTION SIDE.
6. WATER INLET 16 AND OUTLET 15 MAY BE REVERSED AT HEAT EXCHANGER FOR PIPING CONVENIENCE.
7. SHUTOFF VALVES (NF) ARE RECOMMENDED AS SHOWN SO THE PUMP OR EXCHANGER CAN BE SERVICED WITHOUT DRAINING THE TANK.
8. THE CIRCULATING PUMP IS REQUIRED ON ALL INSTALLATIONS AND SHOULD BE A HIGH DELIVERY MODEL TO MEET THE BOILERS MANUFACTURERS RECOMMENDED FLOW RANGE (SEE BULLETIN A-210-HP/FRC FOR FLOW RATES)
9. CIRCULATING LINES 15 AND 16 MUST BE ONE SIZE LARGER THAN THE PUMP OR 1-1/2" ON HEATERS WH-300 TO WH-730, 2" ON HEATERS WH-970 TO WH-1410 AND 2-1/2" ON HEATERS WH-1900 TO WH-3000. IF EITHER LINE IS OVER 25'-0" PIPE LENGTH OR HAS OVER 5 ELLS, INCREASE TO LARGER SIZE.
10. PIPING MUST BE CAREFULLY ALIGNED AS MISALIGNMENT WILL CAUSE PUMP DAMAGE. SEE PUMP MFG.'S INSTALLATION INSTRUCTIONS FOR SPECIFIC'S ON PUMP MOUNTING.
11. THE SENSING BULB OF THE OPERATING WATER TEMPERATURE CONTROL 27 SHOULD BE INSTALLED IN THE WELL FURNISHED ON THE INLET LINE 16 ON THE HEATER SIDE OF THE PUMP AS SHOWN.
12. A SYSTEM RETURN LINE IS RECOMMENDED WITH A SMALL CIRCULATOR CONNECTED TO THE LOWER PORTION OF THE TANK AS SHOWN.
13. ALLOW THE FULL CABINET WIDTH PLUS 10" IN FRONT OF THE HEATER AND INSTALL UNION CONNECTIONS IN THE HEATER CIRCULATING LINES FOR EASY REMOVAL OF EXCHANGER.
14. BEFORE STARTING THE SYSTEM, REMOVE THE EXPANSION TANK (OR EXPANSION TANK ELL) AND FILL THE HEATER WITH CLEAN POTABLE WATER. (SEE SERVICE BULLETIN WT 210 FOR COMPLETE INSTRUCTIONS)
15. FOR DETAILED INSTALLATION INSTRUCTIONS, SEE GENERAL BASIC INSTALLATION INSTRUCTIONS 210 AND INST. 210 AND 211 INST. ENTIRE INSTALLATION MUST BE IN COMPLIANCE WITH LOCAL CODES.

PARKER INDIRECT WATER HEATER

END SUCTION PUMP USED ON WH1900-WH3000

211INST2.DWG

USED ON	PARKER INDIRECT HEATER	PART NAME	PIPING SCHEMATIC
FOR	DUAL TEMPERATURE HOT WATER SYSTEM WITH PARKER INDIRECT HEATER AND STORAGE TANK		
DR.	RPC	DATE	7D
CH.			
APPROVED			
PARKER BOILER CO.		SCALE NONE	
5930 BANDINI BLVD.		SUPERCEDES NO. 4D	
LOS ANGELES, CALIF. 90040		DWG. NO. A-211-INST2	