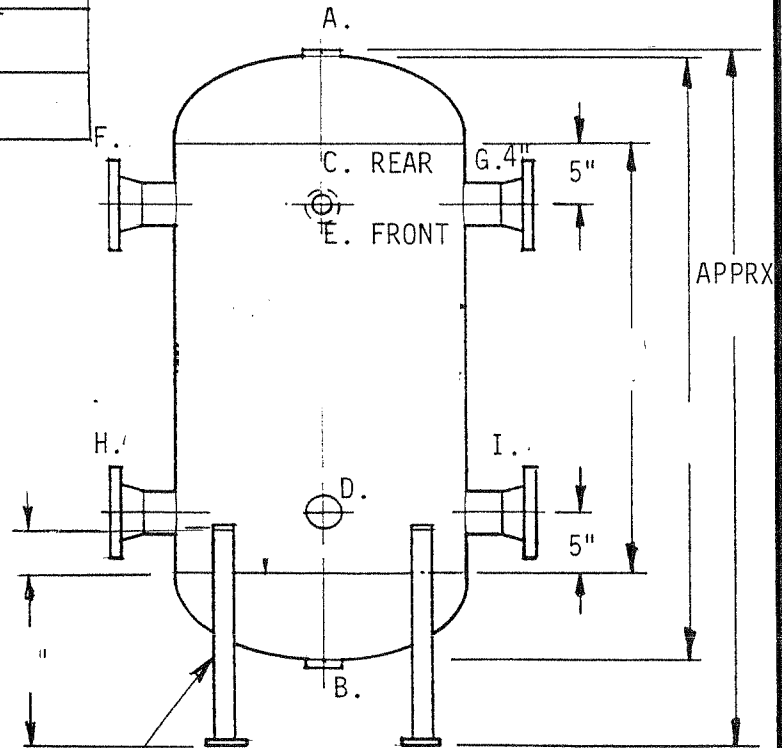
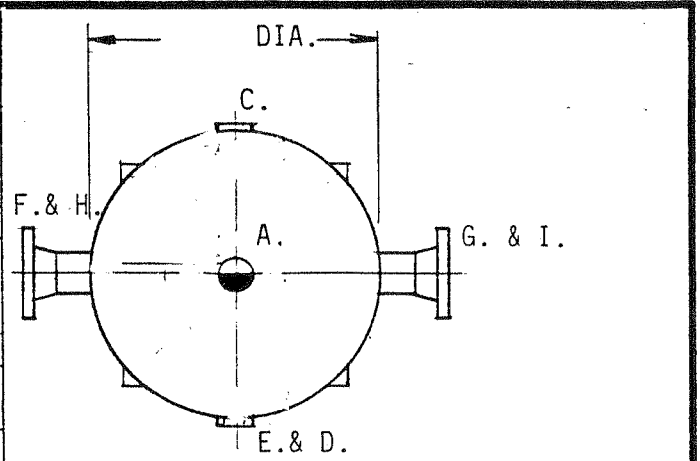


SPECIFICATIONS

<u>ITEM</u>	<u>DATA</u>
GALLON CAPACITY APPROX.	---
SHELL THICKNESS	* 3/16" (.187")
NOM. HEAD THICKNESS - S.E.	** 3/16" (.187")
MAX. ALLOWABLE WORKING PRESS.	125 PSI
DESIGN TEMPERATURE	33 TO 600° F
ASME-U & NAT'L. BOARD REG.	YES
TANK LINING	NONE - BARE STEEL
TANK EXTERIOR (NOT INSULATED)	PAINTED UNLESS OTHERWISE SPECIFIED

OPENINGS

<u>LOCATION</u>	<u>SIZE</u>	<u>TYPE & MATERIAL</u>	<u>PURPOSE</u>
A. & B.		FNPT-WF SA-181 STD	SAF. VAL-DRAIN
C. & D.		FNPT-CWF SA-181 STD	INSPECTION
E.		FNPT-CWF SA-181 STD	GAUGE
F. THRU I.		WNRF-FLG SA-105 CL150	IN - OUT
		SM. PIPE SA-53B SCH40	



ANGLE LEGS " LONG
FOOT PAD DRILL " HOLE

W/
* SHELL MAT'L:
** HEAD MAT'L:

USED ON VERT. STEEL CENTRAL DISTRIBUTION TANK PART NAME DIMENSIONS & SPECIFICATIONS - 600° F

FOR

DR.	
CH.	
APPROVED	

PARKER BOILER co.
5930 BANDINI BLVD.
LOS ANGELES, CALIF. 90040-2999

SCALE NONE

SUPERCEDES NO.

DWG. NO