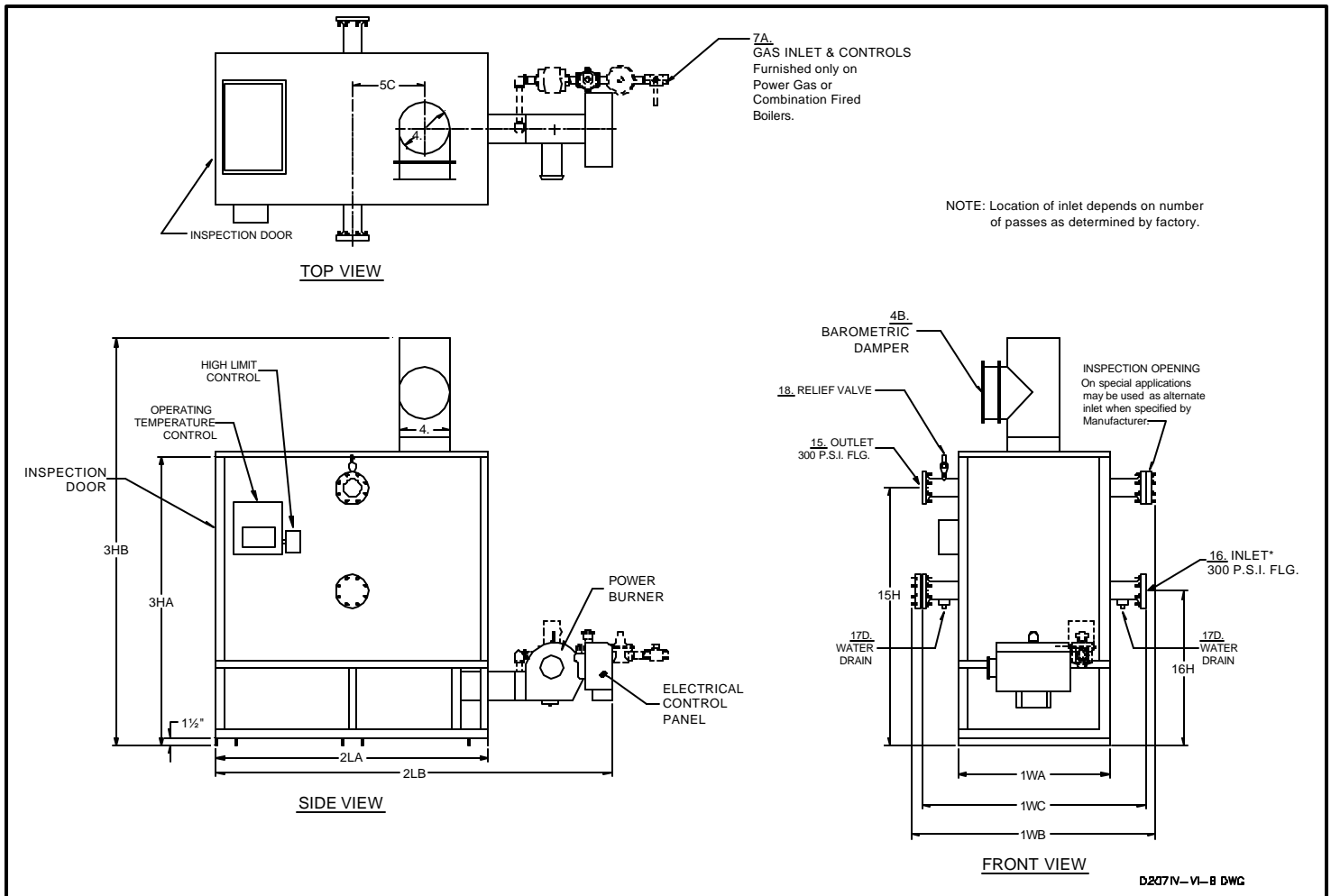


PARKER THERMAL FLUID HEATERS

HT-864 TO HT-1008, POWER GAS, LIGHT OIL OR COMBINATION FIRED

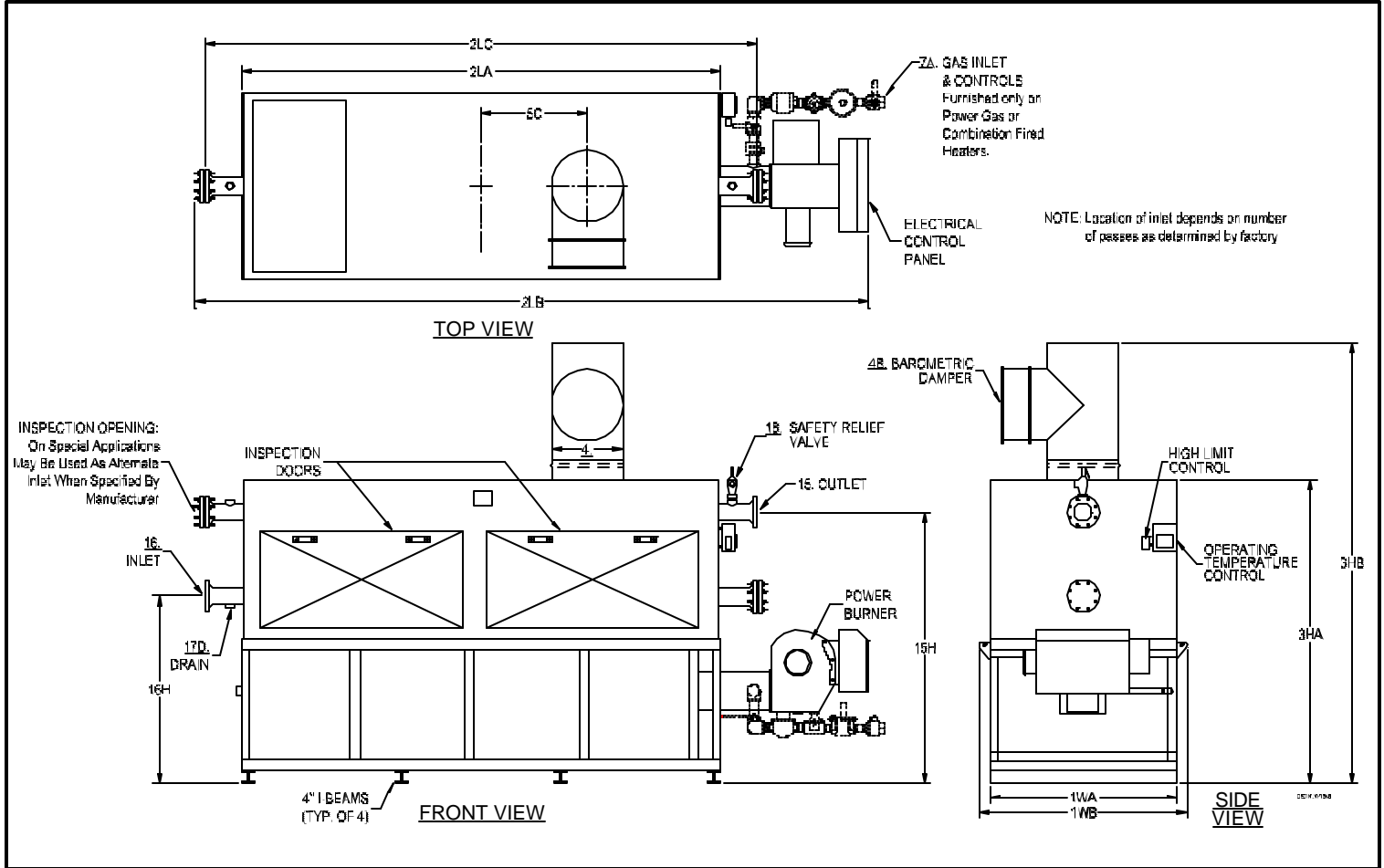


NO.	ITEM	*Denotes Fuel (G,O,GO) MODEL NO.	*HT-864	*HT-1008
A	BTU Input	1000's BTU/HR.	864	1008
B	BTU Output	1000's BTU/HR.	691	806
C	Heating Surface	SQ. FT.	120	133
1WA	Width of Cabinet Only	IN.	29-1/2	29-1/2
1WB	Width Overall Including Lift Brackets	IN.	49	49
2LA	Length of Cabinet Only	IN.	53	57-1/2
2LB	Length Overall	IN.	88	91
2LC	Header Length less Blind Flanges	IN.	45	45
3HA	Height of Cabinet w/Firebox	IN.	57	58
3HB	Height Overall Including Barometric Damper (Std)	IN.	79	84
4	Vent Stack Diameter w/Barometric Damper (Std)	IN.	10	12
5A	Chimney Minimum Height above Boiler @ Sea Level	FT.	12	12
5C	Vent Stack Location from Center	IN.	13	14
7A	Gas Inlet Size - Std. Nat. Gas/Supply Press. Min: 7"; Max: 14" W.C.	IN.	1	1-1/4
8A	Oil Input Required @ Manuf.'s Capacity Rating (#2 Oil)GPH	GPH	6	7.5
8B	Oil Supply Line Size - Minimum For Up to 30'	IN.	1/2	1/2
15	Outlet Size (Class 300 Weld Neck Flanged)	IN.	2	2
15H	Outlet Height From Floor	IN.	50	50
16	Inlet Size (Class 300 Weld Neck Flanged)	IN.	2	2
16H	Inlet Height From Floor	IN.	30	30
17D	Drain Openings (1" Inlet Side of Boiler)	OUTLET SIDE IN.	1	1
18AHP	Saf. Valve Drain Size-125 PSI, 650°F,"S" Code	OULET IN.	1-1/2	1-1/2
J	Liquid Capacity	GAL.	16	18
K	Net Weight Boiler - Approximate	LBS.	2200	2320
L	Crated Shipping Weight of Boiler - Approximate	LBS.	2550	2670

MINIMUM CLEARANCES TO COMBUSTIBLE CONSTRUCTION:	18" Cabinet Sides & Rear	48" Cabinet Top	18" Baro. Damper Chimney Connector
Recommended Clearances for Access: Inspection Doors 18"; Controls 24"; Electrical Panel 30"; Additional Space may be required by Local Codes			

NOTE: All of the above dimensions are for a standard trim model. Due to continuous improvements, specifications are subject to change without notice.

PARKER THERMAL FLUID HEATERS
HT1296 TO HT-6250, POWER GAS, LIGHT OIL OR COMBINATION FIRED



NO.	ITEM NO.	*Denotes Fuel (G,O,GO) MODEL	*HT-1296	*HT-1536	*HT-1920	*HT-2304	*HT-2640	*HT-3120	*HT-3456	*HT-4032	*HT-5000	*HT-6250
A	BTU Input	1000's BTU/HR.	1296	1536	1920	2304	2640	3120	3456	4032	5000	6250
B	BTU Output	1000's BTU/HR.	1037	1229	1536	1843	2112	2496	2765	3226	4000	5000
C	Heating Surface	SQ. FT.	193	220	285	337	364	440	493	573	668	840
1WA	Width of Cabinet Only	IN.	38	44	44	44	54	59	59	59	60	60
1WB	Width Overall Including Lift Brackets	IN.	45	51	51	51	61	66	66	66	67	67
2LA	Length of Cabinet Only	IN.	67	64	78	87	78	81	90	106	122	149
2LB	Length Overall	IN.	108	105	123	127	122	132	139	157	173	200
2LC	Header Length less Blind Flanges	IN.	81	78	92	103	93	97	106	123	138	171
3HA	Height of Cabinet w/Firebox	IN.	72	76	76	76	81	86	86	87	89	93
3HB	Height Overall Including Barometric Damper (Std)	IN.	98	104	106	106	114	120	120	127	128	133
4	Vent Stack Diameter w/Barometric Damper (Std)	IN.	12	14	16	16	18	20	20	22	24	26
5A	Chimney Minimum Height above Boiler @ Sea Level	FT.	12	12	12	12	12	12	12	12	12	12
5C	Vent Stack Location from Center	IN.	17	15	20	21	18	20	22	26	42	33
7A	Gas Inlet Size-Std. Nat. Gas/Supply Press. Min: 7"; Max: 14" W.C.	IN.	1-1/4	1-1/2	1-1/2	2	2	2	2	2	2-1/2	2-1/2
8A	Oil Input Required @ Manuf.'s Capacity Rating (#2 Oil)	GPH	9	11	13.5	34.5	16	21.5	25	29	34.5	44
8B	Oil Supply Line Size - Minimum For Up to 30'	IN.	3/4	3/4	3/4	3/4	3/4	3/4	3/4	1	1	1
15	Outlet Size (Class 300 Weld Neck Flanged)	IN.	3	3	3	4	4	4	4	4	4	4
15H	Outlet Height From Floor	IN.	66	70	70	70	74	77	77	77	79	84
16	Inlet Size (Class 300 Weld Neck Flanged)	IN.	3	3	3	4	4	5	5	5	6	6
16H	Inlet Height From Floor	IN.	40	44	44	44	48	51	51	51	53	58
17D	Drain Openings (1" Inlet Side of Boiler)	OUTLET SIDE IN.	1	1	1	1	1	1	1	1	1	1
18AHP	Saf. Relief Valve Drain Size-125 PSI,650°F,"S" Code	OULET IN.	1-1/2	1-1/2	1-1/2	1-1/2	1-1/2	1-1/2	1-1/2	1-1/2	1-1/2	1-1/2
J	Liquid Capacity	GAL.	27	34	43	49	53	67	75	90	110	135
K	Net Weight Boiler - Approximate	LBS.	3800	4200	5200	5700	5800	7200	7800	10100	10600	12700
L	Crated Shipping Weight of Boiler - Approximate	LBS.	4300	4700	5900	6400	6600	8000	8600	11000	11500	13700

MINIMUM CLEARANCES TO COMBUSTIBLE CONSTRUCTION:	18" Cabinet Sides & Rear	48" Cabinet Top	18" Baro. Damper Chimney Connector
Recommended Clearances for Access: Inspection Doors 18"; Controls 24"; Electrical Panel 30"; Additional Space may be required by Local Codes			

NOTE: All of the above dimensions are for a standard trim model. Due to continuous improvements, specifications are subject to change without notice.