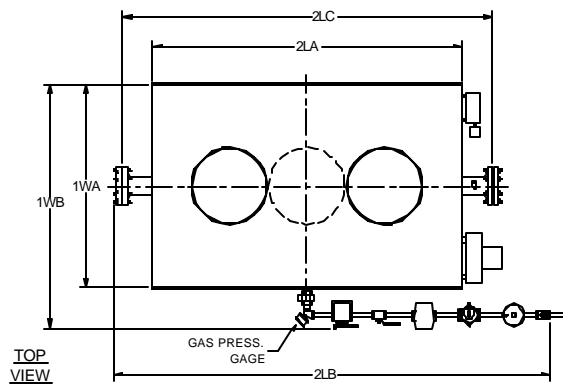


NO.	MODEL NO.	HT-126	HT-180	HT-247	HT-432	HT-528	HT-672	HT-864	HT-1008	
A	BTU Input	1000'S BTU/HR.	126	180	247	432	528	672	864	1008
B	BTU Output	1000'S BTU/HR.	101	144	198	346	422	538	691	806
C	Heating Surface	SQ. FT.	21	27	40.5	67	77	106	120	133
1WA	Width of Cabinet Only	IN.	16	16	18	26	26	26	30	30
1WB	Width Overall Including Controls	IN.	42	43	45	53	53	53	53	53
1WC	Header Length - Less Blind Flanges	IN.	30	31	33	41	41	41	45	45
2LA	Length of Cabinet Only	IN.	28	32	40	39	44	58	53	58
2LB	Length Overall	IN.	34	38	44	44	48	60	55	61
3HA	Height of Cabinet Only	IN.	38	38	38	45	45	45	45	45
3HB	Height Overall Including Draft Hood (Standard)	IN.	66	66	68	77	77	79	81	81
3HC	Ht. Overall Inclu. Baro. Damper (Vert. Outlet/Horiz. Outlet)(Spec. Order)	IN.	54/51	54/51	54/53	64/62	64/62	67/64	67/64	71/67
4A	Vent Stack Diameter with Draft Hood (Standard)	IN.	6	6	8	10	10	12	14	14
4B	Vent Stack Diameter with Barometric Damper (Special Order)	IN.	5	5	6	8	8	10	10	12
7A	Gas Inlet Size - Std. Nat. Gas/Supply Pr ess. Max: 14"WC; Min: 7" WC	IN.	3/4	3/4	3/4	1	1	1	1-1/2	1-1/2
7A1	Manifold Pressure at Burner	IN. WC.	4	4	4	4	4	4	4	4
7B	Hi Press. Nat. & Propane Gas Inlet Size/Supply Press. 1-5 PSI	IN.	1	1	1	1	1	1	1-1/2	1-1/2
7B2	Propane Manifold Press. at Burner	IN.	18	18	18	18	18	18	18	18
7H	Gas Inlet Height From Floor	IN.	6	6	6	5	5	5	5	5
15	Outlet Size (CL300 Weld Neck Flange)	IN.	1-1/4	1-1/4	1-1/2	1-1/2	2	2	2	2
15H	Outlet Height From Floor	IN.	32	32	32	37	37	37	37	37
16	Inlet Size, (CL300 Weld Neck Flange)	IN.	1-1/4	1-1/4	1-1/2	1-1/2	2	2	2	2
16H	Inlet Height From Floor	IN.	15	15	15	17	17	17	17	17
17D	Drain Opening (1" Inlet Side of Boiler)	IN.	(2) 3/4	(2) 3/4	(2) 1	(2) 1	(2) 1	(2) 1	(2) 1	(2) 1
18AHP	Safety Relief Valve Drain Size -650°F,"S" Code	OUTLET IN.	1	1	1	1	1	1-1/2	1-1/2	1-1/2
J	Water Capacity	GAL.	2.6	3.3	5	8.3	9.5	13	16	18
K	Net Weight Boiler - Approximate	LBS.	380	490	550	850	1040	1350	1540	1700
L	Crated Shipping Weight of Boiler - Approximate	LBS.	460	580	650	975	1180	1500	1695	1860

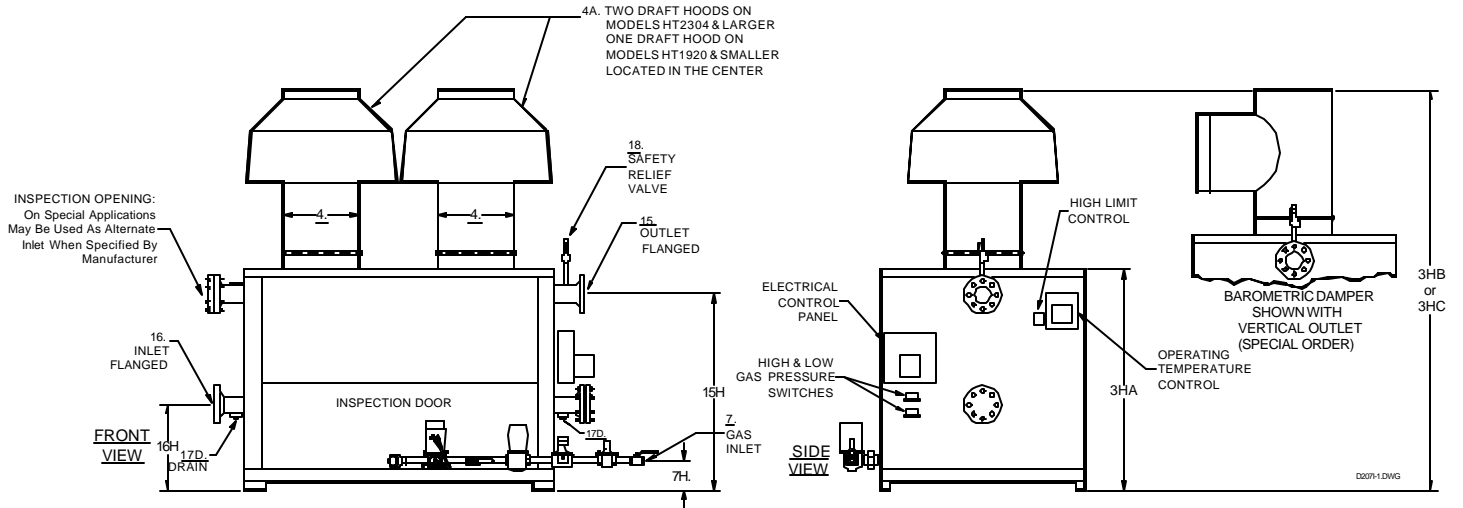
MINIMUM CLEARANCES TO COMBUSTIBLE CONSTRUCTION:	18" Cabinet Sides & Rear	48" Cabinet Top	6" Draft Hood Vent Connector	18" Baro. Damper Chimney Connector
---	-----------------------------	--------------------	---------------------------------	---------------------------------------

Recommended Clearances for Access: Inspection Doors 18"; Controls 24"; Electrical Panel 30"; Additional Space may be required by Local Codes

Note: All of the above dimensions are for a standard trim model. Due to continuous improvements, specifications are subject to change without notice



NOTE: LOCATION OF INLET DEPENDS ON NUMBER OF PASSES AS DETERMINED BY FACTORY.



NO.	MODEL NO.	HT-1296	HT-1536	HT-1920	HT-2304	HT-2640	HT-3120	HT-3456	HT-4032	HT-5000	HT-6250	
A	BTU Input	1000'S BTU/HR.	1296	1536	1920	2304	2640	3120	3456	4032	5000	6250
B	BTU Output	1000'S BTU/HR.	1037	1229	1536	1843	2112	2496	2765	3226	4000	5000
C	Heating Surface	SQ. FT.	193	220	285	337	364	440	493	573	668	840
1WA	Width of Cabinet Only	IN.	36	42	42	42	52	58	58	58	58	58
1WB	Width Overall Including Controls	IN.	59	65	65	67	77	84	84	84	84	84
2LA	Length of Cabinet Only	IN.	66	63	77	87	77	81	90	106	121	148
2LB	Length Overall	IN.	85	82	96	107	97	101	110	127	142	175
2LC	Header Length - Less Blind Flanges	IN.	81	78	92	103	93	97	106	123	138	171
3HA	Height of Cabinet Only	IN.	52	52	52	52	52	56	56	56	56	56
3HB	Height Overall Including Draft Hood (Standard)	IN.	92	94	95	92	92	98	98	98	100	103
3HC	Ht. Overall Inclu. Baro. Damper(Vert. Outlet/Horiz. Outlet)(Spec. Order)	IN.	78/77	80/78	82/81	82/81	86/83	90/90	90/90	96/99	96/99	96/99
4A	Vent Stack Diameter with Draft Hood (Standard)	IN.	(1) 16	(1) 18	(1) 20	(2) 16	(2) 16	(2) 18	(2) 18	(2) 18	(2) 20	(2) 24
4B	Vent Stack Diameter with Barometric Damper (Special Order)	IN.	(1) 12	(1) 14	(1) 16	(1) 16	(1) 18	(1) 20	(1) 20	(1) 22	(1) 24	(1) 26
7A	Gas Inlet Size - Std. Nat. Gas/Supply Press. Max: 14"WC; Min: 7" WC	IN.	1-1/2	2	2	2	2	2-1/2	2-1/2	3	3	3
7A1	Manifold Pressure at Burner	IN. WC	4	4	4	4	4	4	4	4	4	4
7B	Hi Press. Nat. & Propane Gas Inlet Size/Supply Press. 1-5 PSI	IN.	1-1/2	1-1/2	1-1/2	1-1/2	1-1/2	1-1/2	1-1/2	2	2	2
7B2	Propane Manifold Press. at Burner	IN.	18	18	18	18	18	18	18	18	18	18
7H	Gas Inlet Height From Floor	IN.	7	7	7	7	19	19	19	19	19	19
15	Outlet Size (CL300 Weld Neck Flange)	IN.	3	3	3	4	4	4	4	4	4	4
15H	Outlet Height From Floor	IN.	45	45	45	45	45	45	45	45	47	47
16	Inlet Size (CL300 Weld Neck Flange)	IN.	3	3	3	4	4	4	4	4	4	4
16H	Inlet Height From Floor	IN.	19	19	19	19	19	19	19	19	21	21
17D	Drain Opening	IN.	1	1	1	1	1	1	1	1	1	1
18AHP	Safety Relief Valve Drain Size -650°F,"S" Code	OUTLET IN.	1-1/2"	1-1/2"	1-1/2"	1-1/2"	1-1/2"	1-1/2"	1-1/2"	1-1/2"	1-1/2"	1-1/2"
J	Liquid Capacity	GAL.	27	34	43	49	53	67	75	90	110	135
K	Net Weight Boiler - Approximate	LBS.	2710	2890	3400	3910	4350	4920	5500	7060	8030	9650
L	Crated Shipping Weight of Boiler - Approximate	LBS.	2910	3140	3700	4260	4750	5345	6000	7635	8730	10,575

MINIMUM CLEARANCES TO COMBUSTIBLE CONSTRUCTION:	18"	48"	6"	18"
		Cabinet Top	Draft Hood Vent Connector	Baro. Damper Chimney Connector

Recommended Clearances for Access: Inspection Doors 18"; Controls 24"; Electrical Panel 30"; Additional Space may be required by Local Codes

Note: All of the above dimensions are for a standard trim model. Due to continuous improvements, specifications are subject to change without notice