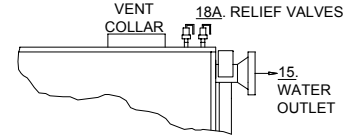
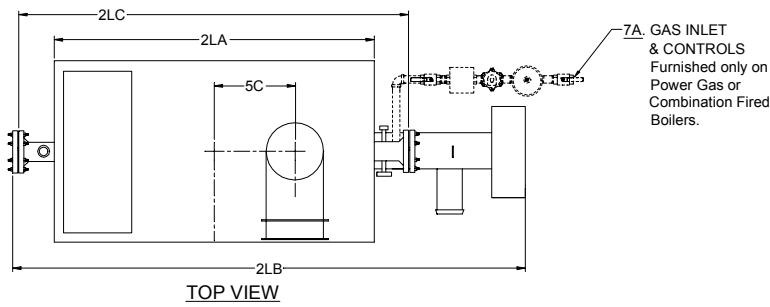
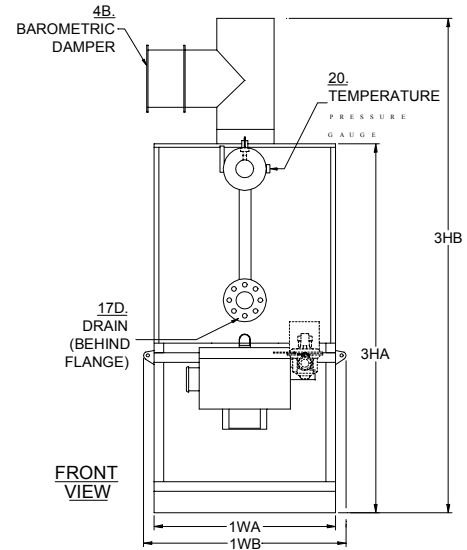
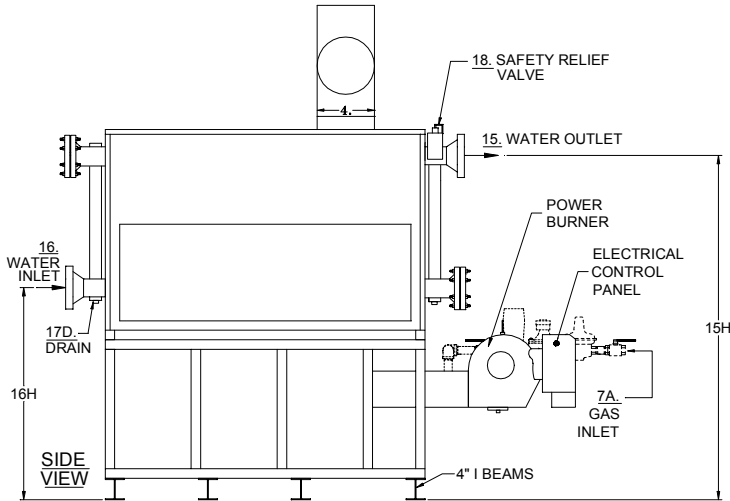


NO.	ITEM	*Denotes Fuel (G,O,GO) MODEL NO.	O-432 G-432	*-528	*-672	*-864	*-1008	
A	BTU Input	1000's BTU/HR.	432	528	672	864	1008	
B	BTU Output	1000's BTU/HR.	346	422	538	691	806	
C	Heating Surface	SQ. FT.	67	77	106	120	133	
1WA	Width of Cabinet Only	IN.	22	22	22	26	26	
1WB	Width Overall Including Controls	IN.	37	37	37	48	48	
1WC	Minimum Header Width - Less Fittings (Blind Flanges on -864 & -1008)	IN.	34	34	34	41	41	
2LA	Length of Cabinet Only	IN.	35	40	54	49	54	
2LB	Length Overall	IN.	66	71	80	77	82	
3HA	Height of Cabinet w/Firebox	IN.	52	52	56	58	58	
3HB	Height Overall Including Barometric Damper (Std.)	IN.	70	70	78	79	83	
4	Vent Stack Diameter with Barometric Damper (Std.)	IN.	8	8	10	10	12	
5A	Chimney Minimum Height Above Boiler @ Sea Level	FT.	12	12	12	12	12	
5C	Vent Stack Location From Center	IN.	8	10	14	14	14	
7A	Gas Inlet Size - Std. Nat. Gas/Supply Press. Min: 7"; Max: 14" W.C.	IN.	1	1	1	1	1-1/4	
8A	Oil Input Required @ Manufacturer's Capacity Rating (#2 Oil)	GPH	3	3.5	5	6	7.5	
8B	Oil Supply Line Size; Min. For Up To 30 FT.	IN.	3/8	3/8	1/2	1/2	1/2	
15	Hot Water Outlet Size (NPT Except -864 & -1008 CL150 Flanged)	IN.	2	2	2	3	3	
15H	Hot Water Outlet Height From Floor	IN.	45	45	49	50	50	
16	Water Inlet Size (NPT Except -864 & -1008 CL150 Flanged)	IN.	2	2	2	3	3	
16H	Water Inlet Height From Floor	IN.	25	25	29	30	30	
17D	Drain Opening(s) (-864 & -1008 1" Inlet Side of Boiler)	OUTLET SIDE IN.	1	1	1	1	1-1/4	
18AHP	Safety Relief Valve Drain Size -125 PSI - 250°F,"H" Code	OUTLET IN.	3/4	3/4	3/4	3/4	3/4	
18ALP	Safety Relief Valve Drain Size - 30 PSI - 250°F,"H" Code	OUTLET IN.	1	1	1-1/4	1-1/4	1-1/2	
	Water Capacity	GAL.	8.3	9.5	13	16	18	
	Net Weight Boiler - Approximate	LBS.	925	1372	1575	1678	1780	
	Crated Shipping Weight of Boiler - Approximate	LBS.	1085	1535	1740	1845	1950	
MINIMUM CLEARANCES TO COMBUSTIBLE CONSTRUCTION:		18" Cabinet Sides & Rear	48" Cabinet Top	18" Baro. Damper Chimney Connector				
Recommended Clearances for Access: Inspection Doors 18"; Controls 24"; Electrical Panel 30"; Additional Space may be required by Local Codes								

NOTE: All of the above dimensions are for a standard trim model. Due to continuous improvements, specifications are subject to change w/o notice.



MODELS O/GO - 4032 TO 6250
Two Relief Valves furnished located as shown on cabinet top.



NO.	ITEM	Denotes Fuel G,O,GO	MODEL NO	*-1296	*-1536	*-1920	*-2304	*-2640	*-3120	*-3456	*-4032	*-5000	*-6250
A	1000's BTU Input			1296	1536	1920	2304	2640	3120	3456	4032	5000	6250
B	1000's BTU Output			1037	1229	1536	1843	2112	2496	2765	3226	4000	5000
C	Heating Surface		SQ.FT.	193	220	285	337	364	440	493	573	668	840
1WA	Width of Cabinet Only		IN.	33	40	40	40	50	56	56	56	56	57
1WB	Width Overall Including Lift Brackets		IN.	40	47	47	47	57	63	63	63	64	64
2LA	Length of Cabinet Only		IN.	63	60	74	84	74	78	87	103	120	147
2LB	Length Overall		IN.	100	99	116	127	113	125	134	148	165	193
2LC	Header Length less Blind Flanges		IN.	78	76	90	101	90	97	106	121	138	168
3HA	Height of Cabinet w/Firebox		IN.	72	76	76	76	81	86	86	86	88	93
3HB	Height Overall Including Barometric Damper (Std)		IN.	98	104	106	106	115	120	120	126	128	133
4	Vent Stack Diameter w/Barometric Damper (Std)		IN.	12	14	16	16	18	20	20	22	24	26
5A	Chimney Minimum Height above Boiler @ Sea Level		FT.	12	12	12	12	12	12	12	12	12	12
5C	Vent Stack Location from Center		IN.	15	15	18	21	21	21	21	25	30	33
7A	Gas Inlet Size - Std. Nat. Gas		IN.	1-1/4	1-1/2	1-1/2	2	2	2	2	2	2-1/2	2-1/2
	Std. Nat. Gas Inlet Supply Pressure; Max:14" WC; Min. WC			7	7	7	7	7	7	7	7-1/2	10	12
8A	Oil Input Required @ Manuf.'s Capacity Rating (#2 Oil)		GPH	9	11	13.5	16	18.5	21.5	25	29	34.5	44
8B	Oil Supply Line Size - Minimum For Up to 30'		IN.	3/4	3/4	3/4	3/4	3/4	3/4	3/4	1	1	1
15	Hot Water Outlet Size (Class 150 Flanged)		IN.	3	4	4	4	4	5	5	5	6	6
15H	Hot Water Outlet Height From Floor		IN.	65	69	69	70	74	77	77	77	79	84
16	Water Inlet Size (Class 150 Flanged)		IN.	3	4	4	4	4	5	5	5	6	6
16H	Water Inlet Height From Floor		IN.	39	43	43	44	48	51	51	51	53	58
17D	Drain Openings (1" Inlet Side of Boiler)		IN.	1-1/4	1-1/4	1-1/2	1-1/2	1-1/2	1-1/2	1-1/2	1-1/2	2	2
18AHP	Saf. Relief Valve Drain Size-125 PSI,250°F,"H" Code		OUTLET IN.	3/4	1	1	1-1/4	1-1/4	1-1/4	1-1/4	(2) 1	(2) 1-1/4	(2) 1-1/4
18ALP	Saf. Relief Valve Drain Size- 30 PSI,250°F,"H" Code		OUTLET IN.	1-1/2	2	2	2-1/2	2-1/2	2-1/2	2-1/2	(2) 2	(2) 2-1/2	(2) 2-1/2
	Water Capacity			27	34	43	49	53	67	75	90	110	135
	Net Weight Boiler - Approximate			2710	3050	3415	4935	4425	6480	7250	9190	9880	11600
	Crated Shipping Weight of Boiler - Approximate			2900	3250	3625	4150	4650	6780	7735	9700	10400	12600

MINIMUM CLEARANCES TO COMBUSTIBLE CONSTRUCTION: 18" Cabinet Sides & Rear, 48" Cabinet Top, 18" Baro. Damper Chimney Connector

Recommended Clearances for Access: Inspection Doors 18"; Controls 24"; Electrical Panel 30"; Additional Space may be required by Local Codes

NOTE: All of the above dimensions are for a standard trim model. Due to continuous improvements, specifications are subject to change w/o notice.