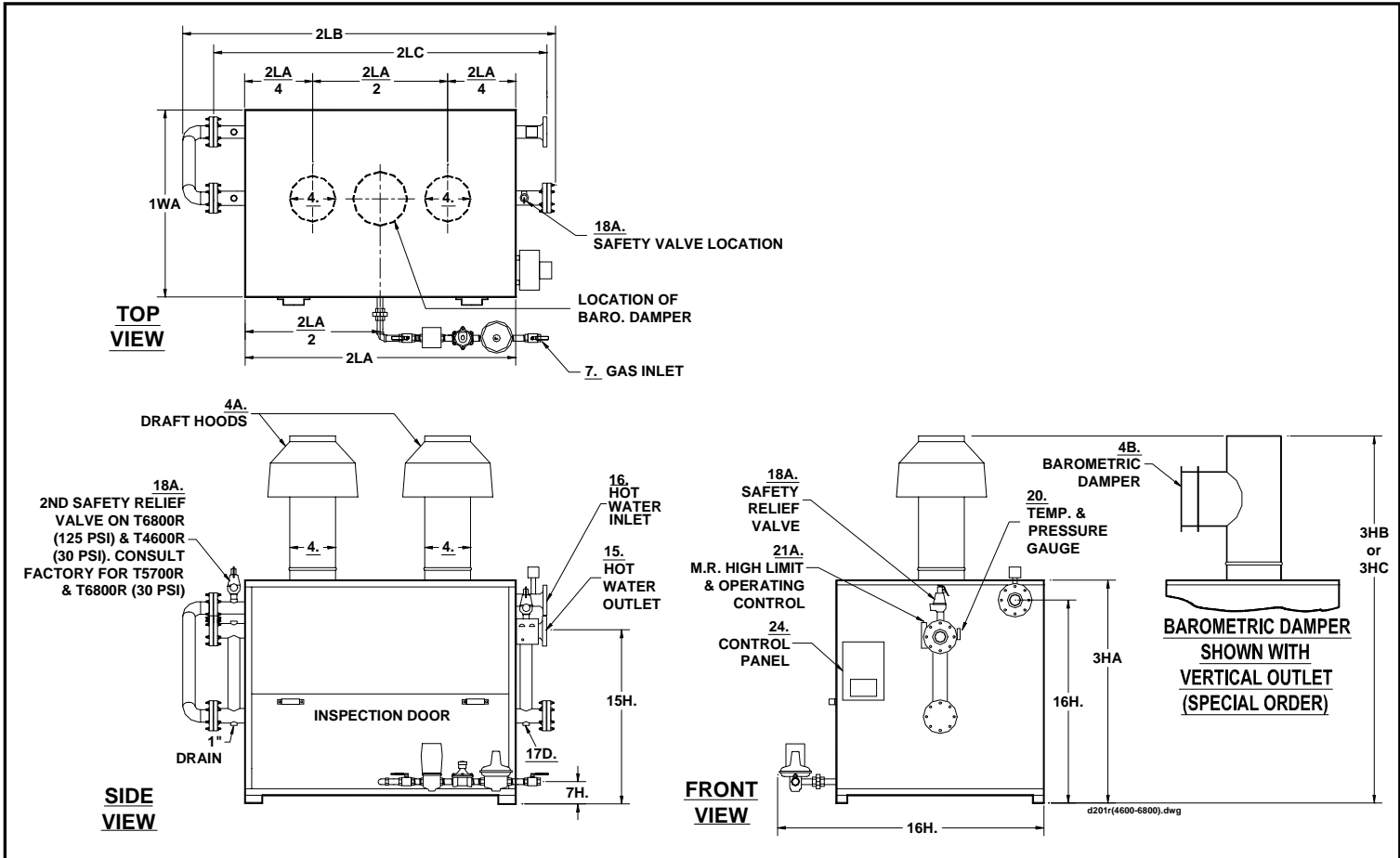


PARKER DIRECT FIRED HOT WATER BOILERS
T4600R TO T6800R - ATMOSPHERIC GAS FIRED W/FINNED CONVECTIVE SECTION

SPEC. SHEET D-201R-I
OD3



NO.		MODEL NO.	T4600R	T5700R	T6800R
A	BTU Input	1000's BTU/HR.	4600	5700	6800
B	BTU Output (82%)	1000's BTU/HR.	3772	4674	5576
C	Heating Surface	SQ.	951	1087	1330
1WA	Width of Cabinet Only	IN.	54	55	55
1WB	Width Overall Including Controls	IN.	72	72	72
2LA	Length of Cabinet Only	IN.	102	119	145
2LB	Length Overall	IN.	138	153	182
2LC	Header Length less Blind Flanges	IN.	121	138	168
3HA	Height of Cabinet Only	IN.	64	64	64
3HB	Height Overall Including Draft Hoods - (Standard)	IN.	108	110	112
3HC	Height Overall Including Baro. Damper (Vert./Horiz. Outlet)(Special Order)	IN.	104 / 104	104 / 107	108 / 110
4A	Vent Stack Diameter with Draft Hoods - (Standard)	IN.	(2) 20	(2) 22	(2) 24
4B	Vent Stack Diameter with Barometric Damper	IN.	22	26	28
7A	Std. Nat. Gas Inlet Size	IN.	3	3	3
7A1	Std. Nat. Gas Inlet Supply Pressure; Max: 14" WC; Min: ___ "W.C.	IN. WC	7	10	10
7A2	Nat. Gas Manifold Pressure at Burner	IN.	4	4	4
7B	Hi Press. Nat. Gas or LPG Gas Inlet Size Supply Press. 1-5 PSI	IN.	2	2	2
7B1	Propane Manifold Pressure at Burner	IN. WC	18	18	18
7H	Gas Inlet Height From Floor	IN.	19	19	19
15	Hot Water Outlet Size (Class 150 Flanged)	IN.	5	6	6
15H	Hot Water Outlet Height From Floor	IN.	47	47	47
16	Water Inlet Size (Class 150 Flanged)	IN.	5	6	6
16H	Water Inlet Height From Floor	IN.	58	58	58
17D	Drain Openings (1" Return Side of Boiler)	Outlet Side IN.	1-1/2	2	2
18AHP	Safety Relief Valve Drain Size-125 PSI, 250°F, "H" Code OUTLET	IN.	2	2	(2) 2
18ALP	Safety Relief Valve Drain Size- 30 PSI, 250°F, "H" Code OUTLET	IN.	(2) 2-1/2	CF	CF
J	Water Capacity	GAL.	120	143	162
K	Net Weight of Boiler	LBS.	7570	8930	10750
L	Domestic Crated Shipping Weight of Boiler	LBS.	8170	9750	11725

MINIMUM LISTED CLEARANCES TO COMBUSTIBLE CONSTRUCTION:	12" Cabinet Sides & Rear	48" Cabinet Top	6" Draft Hood Vent Connector	12" Baro. Damper Chimney Connector
--	--------------------------	-----------------	------------------------------	------------------------------------

Recommended Clearances for Access: Inspection Doors 18"; Controls 24"; Electrical Panel 30"; Additional Space may be required by Local Codes

CF-Consult Factory. Note: Due to continuous improvements, specifications are subject to change without notice.