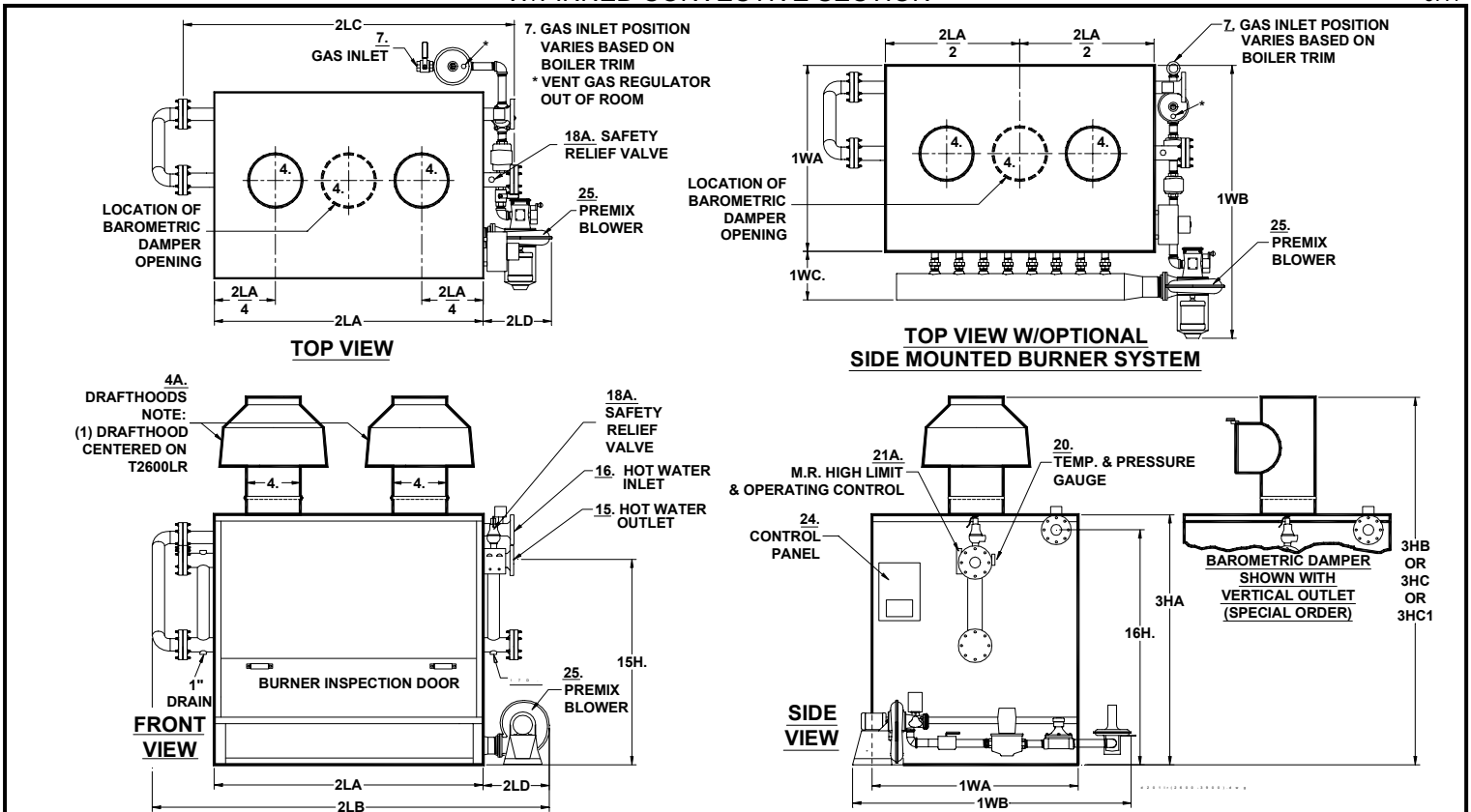


PARKER HIGH EFFICIENCY, LOW NOx DIRECT FIRED HOT WATER BOILERS
 T2600LR TO T3900LR – PREMIX BLOWER GAS FIRED
 W/FINISHED CONVECTIVE SECTION

SPEC. SHEET
 D-201LR-I
 OH1



NO.		MODEL NO.	T2600LR	T2970LR	T3600LR	T3900LR
A	BTU Input	1000's BTU/HR.	2600	2970	3600	3900
B	BTU Output (84%)	1000's BTU/HR.	2184	2495	3024	3276
C	Heating Surface	SQ. FT.	494	576	666	807
1WA	Width of Cabinet Only	IN.	38	48	54	54
1WB	Width Overall with Blower & Controls (Bottom / Side Mounted)**	IN.	53 / 70	63 / 80	75 / 87	75 / 87
1WC	Width of Premix Manifold Beyond Cabinet – (Side Mounted only)	IN.	19	19	19	19
2LA	Length of Cabinet Only	IN.	83	73	77	86
2LB	Length Overall (Bottom Mounted / Side Mounted)	IN.	123 / 123	115 / 115	126 / 123	135 / 132
2LC	Header Length less Blind Flanges	IN.	101	90	97	106
2LD	Length of Blower Beyond Cabinet (Bottom Mounted / Side Mounted)	IN.	24 / 24	24 / 24	27 / 24	27 / 24
3HA	Height of Cabinet Only (Bottom Mounted / Side Mounted)	IN.	71 / 66	71 / 66	72 / 68	72 / 68
3HB	Height Overall Including Drafthood (Std) (Bottom Mounted / Side Mounted)	IN.	113 / 108	111 / 106	114 / 110	114 / 110
3HC	Height Overall Inclu. Baro. Damper (Vert. / Horiz. Outlet) (Spec. Order) (Bottom Mounted)	IN.	105 / 102	105 / 102	106 / 106	112 / 111
3HC1	Height Overall Inclu. Baro. Damper (Vert. / Horiz. Outlet) (Spec. Order) (Side Mounted)	IN.	100 / 97	100 / 97	102 / 102	108 / 107
4A	Vent Stack Diameter w/Draft Hood(s)	IN.	(1) 20	(2) 16	(2) 18	(2) 18
4B	Vent Stack Diameter with Barometric Damper	IN.	(1) 18	(1) 18	(1) 20	(1) 22
7A	Std. Nat. Gas Inlet Size	IN.	2	2	2.5	2.5
7A1	Std. Nat. Gas Inlet Supply Pressure; Max: 14" WC; Min: ___ " WC	IN. WC	7	7	7	7
7B	Hi Pressure Natural Gas or LP Gas Inlet Size, Supply Pressure 1-5 PSI	IN.	1-1/2	1.5	1.5	1.5
15	Hot Water Outlet Size (Class 150 Flanged)	IN.	4	4	5	5
15H	Hot Water Outlet Height From Floor (Bottom Mounted / Side Mounted)	IN.	56 / 51	56 / 51	57 / 52	57 / 52
16	Water Inlet Size (Class 150 Flanged)	IN.	4	4	5	5
16H	Water Inlet Height From Floor (Bottom Mounted / Side Mounted)	IN.	66 / 59	66 / 59	66 / 60	66 / 60
17D	Drain Openings (1" Return Side of Boiler)	IN.	1-1/2	1.5	1.5	1.5
18AHP	Safety Relief Valve Size- 125 PSI, 250°F, "H" Code OUTLET	OUTLET IN.	1-1/4	1-1/2	2	2
18ALP	Safety Relief Valve Size- 30 PSI, 250°F, "H" Code OUTLET	OUTLET IN.	2-1/2	(2) 2	(2) 2-1/2	(2) 2-1/2
20A	Power Specifications (2 Separate Services Required)		(1) 3PH & (1) 115V /1Ph			
20B	Controls (115V - 1 Phase, 60 Cycle)		5 AMPS			
21	Blower HP (3 Phase, 60 Cycle)		1HP	1HP	1.5HP	2HP
J	Water Capacity	GAL.	63	71	90	103
K	Net Weight Boiler - Approximate	LBS.	3900	4380	5231	6108
L	Crated Shipping Weight of Boiler - Approximate	LBS.	4250	4780	5656	6558

MINIMUM LISTED CLEARANCES TO COMBUSTIBLE CONSTRUCTION: 12" Cabinet Sides & Rear, 48" Cabinet Top, 6" Draft Hood Vent Connector, 12" Baro. Damper Chimney Connector
 Recommended Clearances for Access: Inspection Doors 18"; Controls 24"; Electrical Panel 36"; Additional Space may be required by Local Codes

** Width & Gas Inlet Position may vary based on Boiler Trim.
 Note: Due to continuous improvements, specifications are subject to change without notice