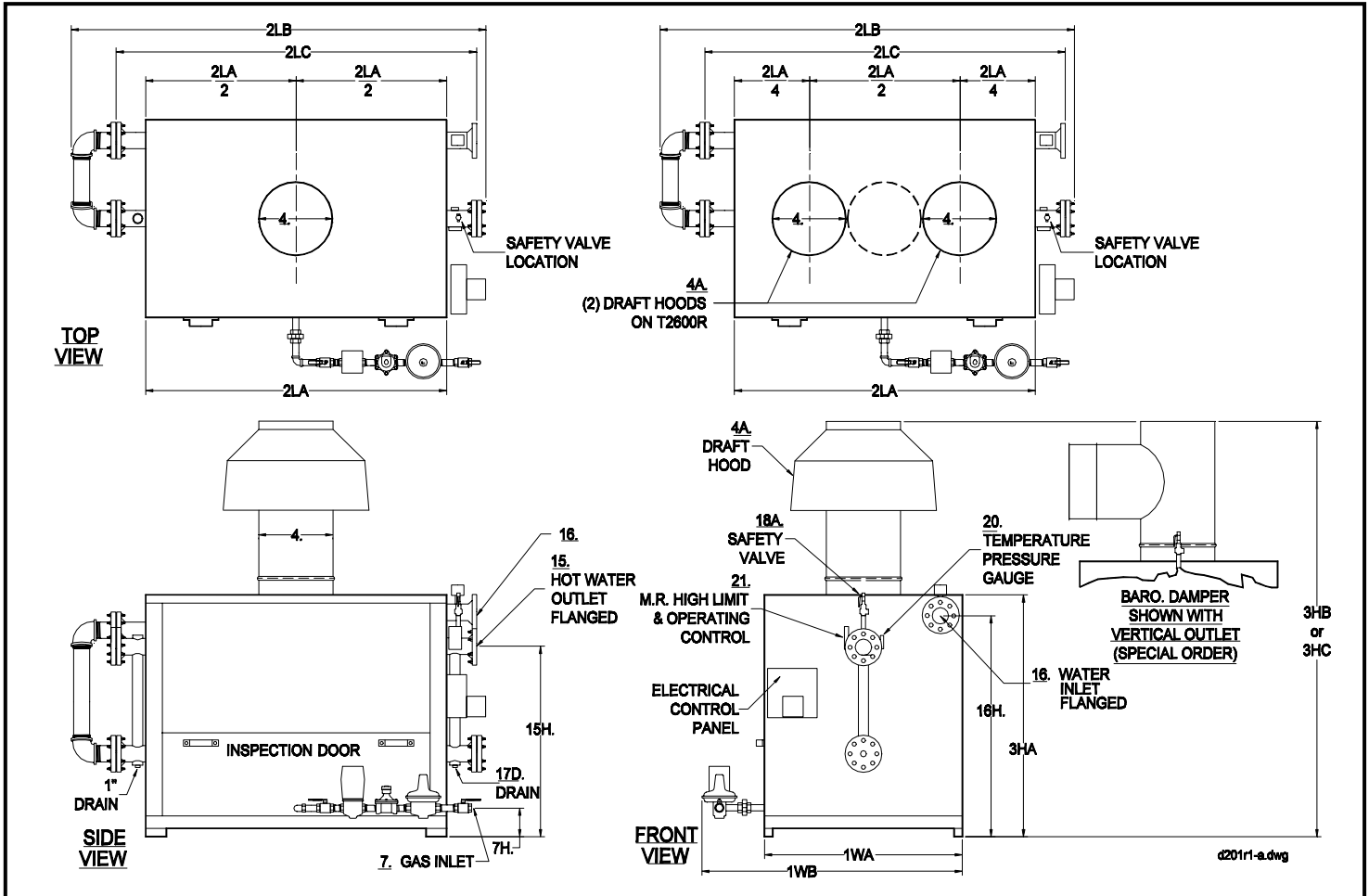


NO.	MODEL NO.	T300R	T395R	T490R	T600R	T760R	T970R	T1140R	
A	BTU Input	1000's BTU/HR.	300	395	490	600	760	970	1140
B	BTU Output (82%)	1000's BTU/HR.	246	324	402	492	623	795	935
C	Heating Surface	SQ. FT.	68.5	104	104	114	175	203	217
1WA	Width of Cabinet Only	IN.	16	22	22	22	22	26	26
1WB	Width Overall Including Controls	IN.	34	40	40	40	41	44	54
1WC	Minimum Header Width - Less Fittings (Blind Flanges on T970 & T1140)	IN.	28	34	34	34	34	41	41
2LA	Length of Cabinet Only	IN.	39	35	35	40	54	49	54
2LB	Length Overall	IN.	39	35	35	40	54	49	54
3HA	Height of Cabinet Only	IN.	46	51	51	51	51	51	51
3HB	Height Overall Including Draft Hood(s) (Standard)	IN.	75	82	82	83	84	86	90
3HC	Ht. Overall Inclu. Baro. Damper (Vert. Outlet/Horizt. Outlet) - (Spec. Order)	IN.	64/62	69/67	69/67	69/67	72/69	76/72	76/72
4A	Vent Stack Diameter with Draft Hood (Standard)	IN.	8	10	10	12	12	14	16
4B	Vent Stack Diameter with Barometric Damper (Special Order)	IN.	8	8	8	8	10	12	12
7A	Std. Nat. Gas Inlet Size	IN.	3/4	3/4	1	1	1	1-1/2	1-1/2
7A1	Std. Nat. Gas Inlet Supply Press: Max: 14" WC; Min: 7" WC	IN. WC	7	7	7	7	7	7	7
7A2	Manifold Pressure at Burner	IN. WC	4	4	4	4	4	4	4
7B	Hi Press. Nat. & Propane Gas Inlet Size/Supply Press. 1-5 PSI	IN.	3/4	3/4	3/4	3/4	3/4	1-1/2	1-1/2
7B2	Propane Manifold Press. at Burner	IN. WC	18	18	18	18	18	18	18
7H	Gas Inlet Height From Floor	IN.	6	5	5	5	5	5	5
15	Hot Water Outlet Size *(NPT Except T970 & T1140 Class 150 Flanged)	IN.	1-1/2	2	2	2	2	3*	3*
15H	Hot Water Outlet Height From Floor	IN.	32	37	37	37	37	37	37
16	Water Inlet Size *(NPT Except T1140 Class 150 Flanged)	IN.	2	2	2	2	2	2	3*
16H	Water Inlet Height From Floor	IN.	39	44	44	44	44	44	44
17D	Drain Opening(s) (T970 & T1140 1" Inlet Side of Boiler)	Outlet Side IN.	3/4	1	1	1	1	1	1-1/4
18AHP	Safety Relief Valve Drain Size- 125 PSI, 250°F, "H" Code	OUTLET IN.	3/4	3/4	3/4	3/4	3/4	3/4	1
18ALP	Safety Relief Valve Drain Size- 30 PSI, 250°F, "H" Code	OUTLET IN.	3/4	1-1/4	1-1/4	1-1/4	1-1/2	1-1/2	2
J	Water Capacity	GAL.	6.5	10	10	11	16	19	21
K	Net Weight of Boiler	LBS.	590	960	960	1150	1390	1565	1750
L	Domestic Crated Shipping Weight of Boiler	LBS.	690	1085	1085	1286	1540	1720	1910

MINIMUM LISTED CLEARANCES TO COMBUSTIBLE CONSTRUCTION: Cabinet Sides & Rear 12", Cabinet Top 48", Draft Hood Vent Connector 6", Baro. Damper Chimney Connector 12"

Recommended Clearances for Access: Inspection Doors 18"; Controls 24"; Electrical Panel 30"; Additional Space may be required by Local Codes

Note: All of the above dimensions are for a standard trim model. Due to continuous improvement, specifications are subject to change without notice.



NO.		MODEL NO.	T1460R	T1730R	T1995R	T2160R	T2600R
A	BTU Input	1000's BTU/HR.	1460	1730	1995	2160	2600
B	BTU Output (82%)	1000's BTU/HR.	1197	1419	1636	1771	2132
C	Heating Surface	SQ. FT.	288	343	436	436	494
1WA	Width of Cabinet Only	IN.	32	38	38	38	38
1WB	Width Overall Including Controls	IN.	46	52	52	52	53
2LA	Length of Cabinet Only	IN.	62	59	73	73	83
2LB	Length Overall	IN.	87	86	100	100	112
2LC	Header Length less Blind Flanges	IN.	78	76	90	90	101
3HA	Height of Cabinet Only	IN.	59	61	61	61	61
3HB	Height Overall Including Draft Hood(s) - (Standard)	IN.	101	103	105	105	101
3HC	Ht. Overall Inclu. Baro. Damper (Vert./Horiz. Outlet)(Spec. Order)	IN.	87/85	89/87	91/90	91/90	95/92
4A	Vent Stack Diameter with Draft Hood(s) - (Standard)	IN.	(1) 18	(1) 18	(1) 20	(1) 20	(2) 16
4B	Vent Stack Diameter with Barometric Damper	IN.	(1) 14	(1) 14	(1) 14	(1) 16	(1) 18
7A	Std. Nat. Gas Inlet Size	IN.	1-1/2	2	2	2	2
7A1	Std. Nat. Gas Inlet Supply Pressure Max: 14" WC; Min. ____" WC	IN. WC	7	7	7	7	7
7A2	Nat. Gas Manifold Pressure at Burner	IN. WC	4	4	4	4	4
7B	Hi Press. Nat. & Propane Gas Inlet Size Supply Press. 1-5 PSI	IN.	1-1/2	1-1/2	1-1/2	1-1/2	1-1/2
7B1	Propane Manifold Pressure at Burner	IN. WC	18	18	18	18	18
7H	Gas Inlet Height From Floor	IN.	7	7	7	7	7
15	Hot Water Outlet Size (Class 150 Flanged)	IN.	3	4	4	4	4
15H	Hot Water Outlet Height From Floor	IN.	46	46	46	46	46
16	Water Inlet Size (Class 150 Flanged)	IN.	3	4	4	4	4
16H	Water Inlet Height From Floor	IN.	53	56	56	56	56
17D	Drain Openings (1" Return Side of Boiler)	Outlet Side IN.	1-1/4	1-1/4	1-1/2	1-1/2	1-1/2
18AH	Safety Relief Valve Drain Size-125 PSI, 250°F, "H" Code OUTLET	IN.	1-1/4	1-1/4	1-1/4	1-1/4	1-1/4
18AL	Safety Relief Valve Drain Size- 30 PSI, 250°F, "H" Code OUTLET	IN.	2	2-1/2	2-1/2	2-1/2	2-1/2
J	Water Capacity	GAL.	32	41	51	51	63
K	Net Weight of Boiler	LBS.	2650	2870	3380	3380	3850
L	Domestic Crated Shipping Weight of Boiler	LBS.	2850	3120	3680	3680	4200

MINIMUM LISTED CLEARANCES TO COMBUSTIBLE CONSTRUCTION:	12" Cabinet Sides & Rear	48" Cabinet Top	6" Draft Hood Vent Connector	12" Baro. Damper Chimney Connector
--	--------------------------	-----------------	------------------------------	------------------------------------

Recommended Clearances for Access: Inspection Doors 18"; Controls 24"; Electrical Panel 30: Additional Space may be required by Local Codes

Note: All of the above dimensions are for a standard trim model. Due to continuous improvements, specifications are subject to change without notice