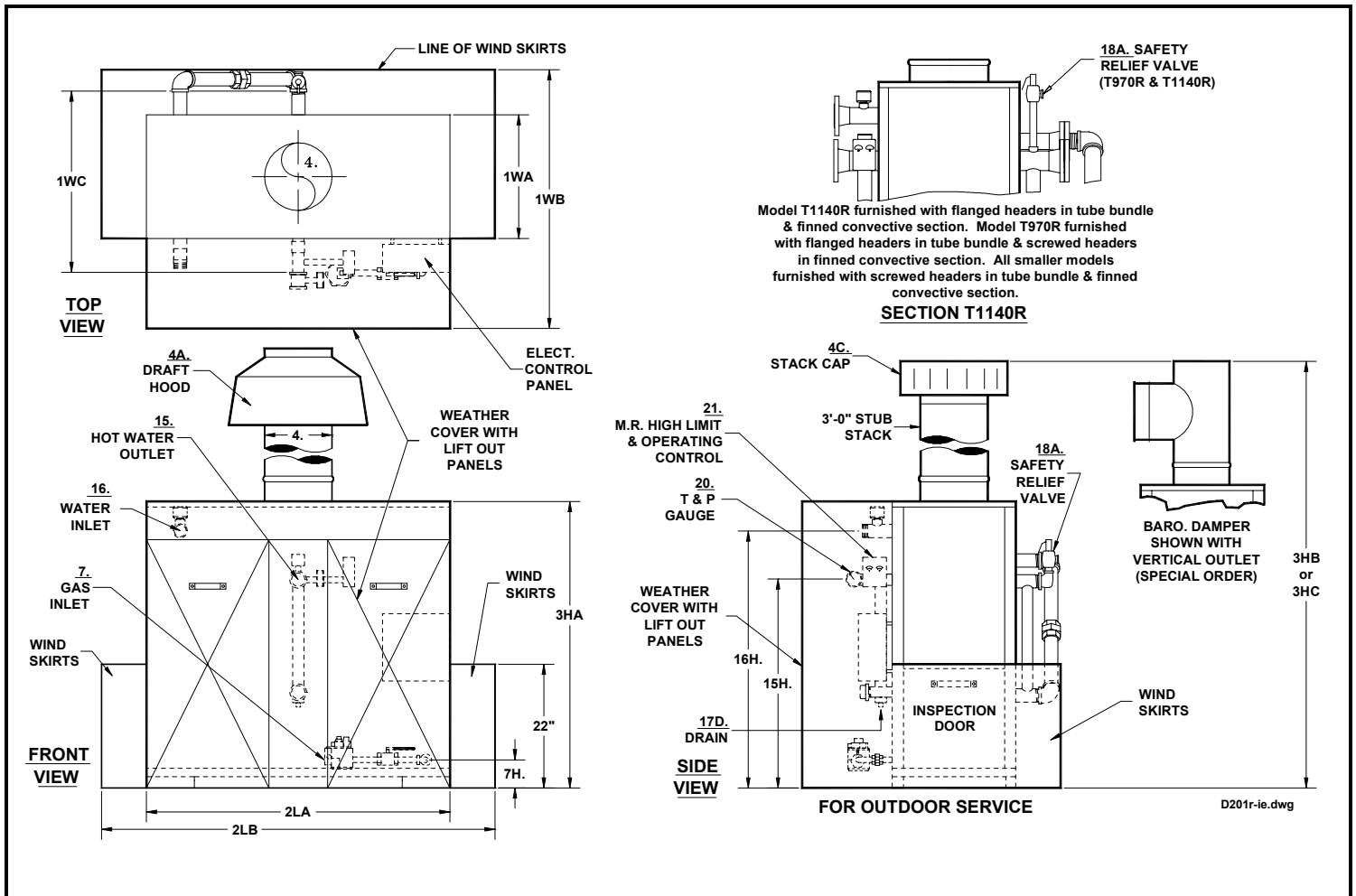


PARKER DIRECT FIRED HOT WATER BOILER
T300R TO T1140R - ATMOSPHERIC GAS FIRED W/ FINNED CONVECTIVE SECTION
OUTDOOR SERVICE

SPEC. SHEET D-201R-IE
 OJ1



NO.		MODEL NO.	T300R	T395R	T490R	T600R	T760R	T970R	T1140R
A	BTU Input	1000's BTU/HR.	300	395	490	600	760	970	1140
B	BTU Output (82%)	1000's BTU/HR.	246	324	402	492	623	795	935
C	Heating Surface	SQ. FT.	68.5	104	104	114	175	203	217
1WA	Width of Cabinet Only	IN.	16	22	22	22	22	26	26
1WB	Width Overall	IN.	40	46	46	46	46	50	50
1WC	Minimum Header Width - Less Fittings (Blind Flanges on T970 & T1140)	IN.	28	34	34	34	34	41	41
2LA	Length of Cabinet Only	IN.	39	35	35	40	54	49	54
2LB	Length Overall	IN.	55	51	51	56	70	65	70
3HA	Height of Cabinet Only	IN.	46	51	51	51	51	51	51
3HB	Ht Overall Incl. Draft Hood (Std)/3'-0" Stub Stack w/Americap (Approx.)	IN.	75/93	82/100	82/100	83/102	84/102	86/105	90/106
3HC	Height Overall Incl. Baro. Damper (Vert. Outlet/ Horiz. Outlet)-(Spec. Order)	IN.	64/62	69/67	69/67	69/67	72/69	76/72	76/72
4A, C	Vent Stack Diameter with Draft Hood (Std) or Americap	IN.	8	10	10	12	12	14	16
4B	Vent Stack Diameter with Barometric Damper (Special Order)	IN.	8	8	8	8	10	12	12
7A	Std. Nat. Gas Inlet Size	IN.	3/4	3/4	1	1	1	1-1/2	1-1/2
7A1	Std. Nat. Gas Inlet Supply Press: Max: 14" WC; Min: 7" WC	IN. WC	7	7	7	7	7	7	7
7A2	Manifold Pressure at Burner	IN. WC	4	4	4	4	4	4	4
7B	Hi Press. Nat. & Propane Gas Inlet Size/Supply Press. 1-5 PSI	IN.	3/4	3/4	3/4	3/4	3/4	1-1/2	1-1/2
7B2	Propane Manifold Press. at Burner	IN. WC	18	18	18	18	18	18	18
7H	Gas Inlet Height From Floor	IN.	6	5	5	5	5	5	5
15	Hot Water Outlet Size *(NPT Except T970 & T1140 Class 150 Flanged)	IN.	1-1/2	2	2	2	2	3*	3*
15H	Hot Water Outlet Height From Floor	IN.	32	37	37	37	37	37	37
16	Water Inlet Size *(NPT Except T1140 Class 150 Flanged)	IN.	2	2	2	2	2	2	3*
16H	Water Inlet Height From Floor	IN.	39	44	44	44	44	44	44
17D	Drain Opening(s) (T970 & T1140 1" Inlet Side of Boiler)	Outlet Side IN.	3/4	1	1	1	1	1	1-1/4
18AHP	Safety Relief Valve Drain Size- 125 PSI, 250°F, "H" Code	OUTLET IN.	3/4	3/4	3/4	3/4	3/4	3/4	1
18ALP	Safety Relief Valve Drain Size- 30 PSI, 250°F, "H" Code	OUTLET IN.	3/4	1-1/4	1-1/4	1-1/4	1-1/2	1-1/2	2
J	Water Capacity	GAL.	6.5	10	10	11	16	19	21
K	Net Weight of Boiler	LBS.	700	1075	1075	1270	1530	1700	1895
L	Domestic Crated Shipping Weight of Boiler	LBS.	800	1200	1200	1410	1680	1855	2055

MINIMUM LISTED CLEARANCES TO COMBUSTIBLE CONSTRUCTION:	12" Cabinet Sides & Rear	48" Cabinet Top
--	-----------------------------	--------------------

Recommended Clearances for Access: Inspection Doors 18"; Controls 24"; Electrical Panel 30"; Additional Space may be required by Local Codes

Note: All of the above dimensions are for a standard trim model. Due to continuous improvement, specifications are subject to change without notice.