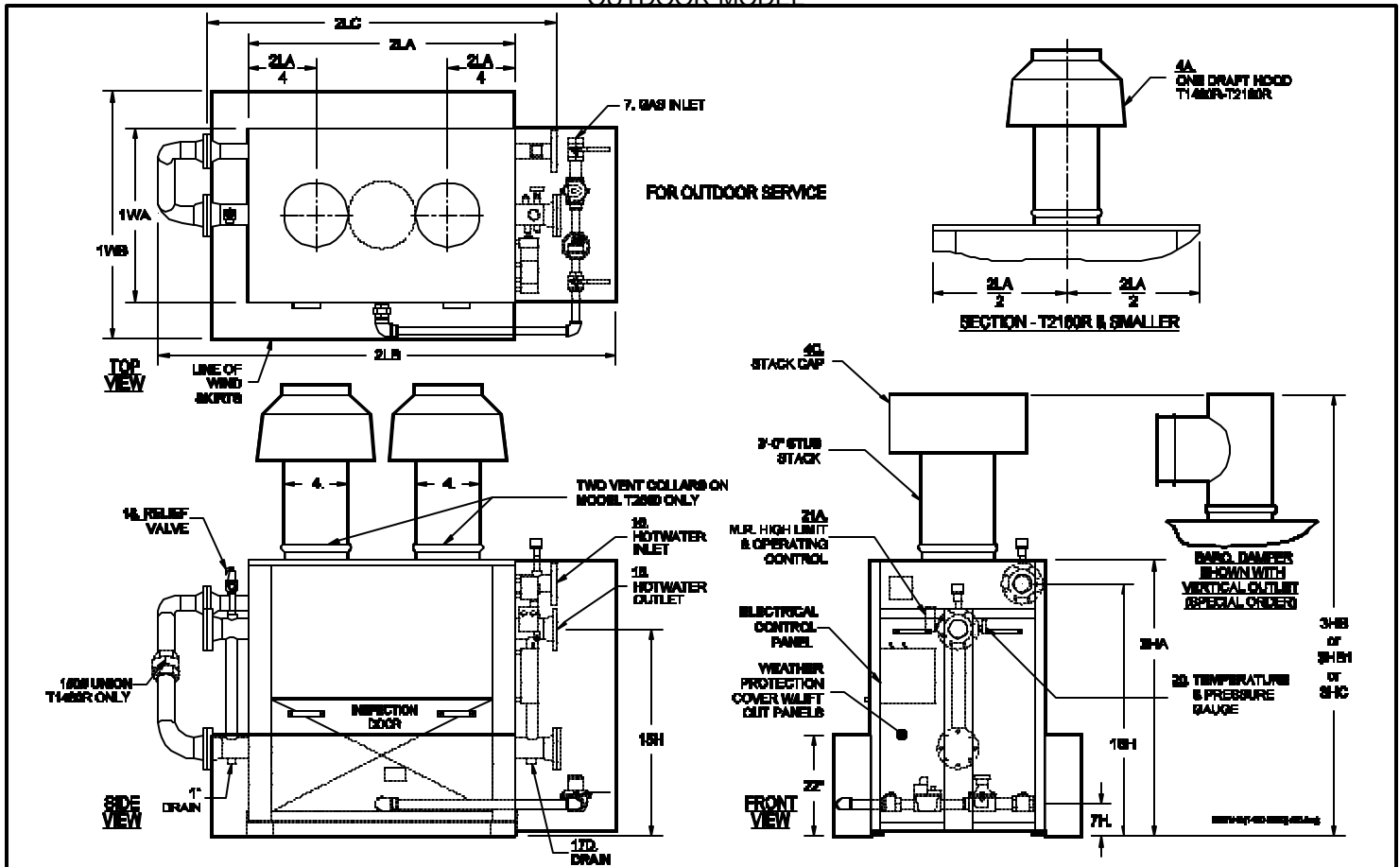


PARKER DIRECT FIRED HOT WATER BOILER
T1460R TO T2600R - ATMOSPHERIC GAS FIRED W / FINNED CONVECTIVE SECTION
OUTDOOR MODEL



NO	MODIFI NO	T1460R	T1730R	T1995R	T2160R	T2600R	
A	BTU Input	1000's BTU/HR	1460	1730	1995	2160	2600
B	BTU Output (82%)	1000's BTU/HR	1197	1419	1636	1771	2132
C	Heating Surface	SQ FT	288	343	436	436	497
1WA	Width of Cabinet Only	IN	32	38	38	38	38
1WB	Width Overall	IN	48	54	54	54	54
2LA	Length of Cabinet Only	IN	62	59	73	73	83
2LB	Length Overall	IN	98	101	115	115	124
2LC	Header Length less Blind Flanges	IN	78	76	90	90	101
3HA	Height of Cabinet Only	IN	59	61	61	61	61
3HB	Height Overall Including Draft Hood(s) - (Standard)	IN	101	103	105	105	101
3HB1	Ht. Overall Inclu. 3'-0" Stub Stack & Americap	IN	115	117	120	120	116
3HC	Ht. Overall Inclu. Baro. Damper (Vert./Horiz. Outlet)(Spec. Order)	IN	87/85	89/87	91/90	91/90	95/92
4A,C	Vent Stack Diameter with Draft Hood(s) or Americap(s)	IN	(1) 18	(1) 18	(1) 20	(1) 20	(2) 16
4B	Vent Stack Diameter with Barometric Damper	IN	(1) 14	(1) 14	(1) 14	(1) 16	(1) 18
7A	Std. Nat. Gas Inlet Size	IN	1-1/2	2	2	2	2
7A1	Std. Nat. Gas Inlet Supply Pressure Max: 14" WC; Min. " WC	IN. WC	7	7	7	7	7
7A2	Nat. Gas Manifold Pressure at Burner	IN. WC	4	4	4	4	4
7B	Hi Press. Nat. & Propane Gas Inlet Size Supply Press. 1-5 PSI	IN	1-1/2	1-1/2	1-1/2	1-1/2	1-1/2
7B1	Propane Manifold Pressure at Burner	IN. WC	18	18	18	18	18
7H	Gas Inlet Height From Floor	IN	7	7	7	7	7
15	Hot Water Outlet Size (Class 150 Flanged)	IN	3	4	4	4	4
15H	Hot Water Outlet Height From Floor	IN	46	46	46	46	46
16	Water Inlet Size (Class 150 Flanged)	IN	3	4	4	4	4
16H	Water Inlet Height From Floor	IN	53	56	56	56	56
17D	Drain Openings (1" Return Side of Boiler)	Outlet Side IN.	1-1/4	1-1/4	1-1/2	1-1/2	1-1/2
18AH	Safety Relief Valve Drain Size-125 PSI, 250°F, "H" Code OUTLET	IN	1-1/4	1-1/4	1-1/4	1-1/4	1-1/4
18ALP	Safety Relief Valve Drain Size- 30 PSI, 250°F, "H" Code OUTLET	IN	2	2-1/2	2-1/2	2-1/2	2-1/2
J	Water Capacity	GAL.	32	41	51	51	51
K	Net Weight of Boiler	LBS.	2804	3033	3562	3562	4024
L	Domestic Crated Shipping Weight of Boiler	LBS.	3004	3283	3862	3862	4374

MINIMUM LISTED CLEARANCES TO COMBUSTIBLE CONSTRUCTION:	12" Cabinet Sides & Rear	48" Cabinet Top	6" Draft Hood Vent Connector	12" Baro. Damper Chimney Connector
--	--------------------------	-----------------	------------------------------	------------------------------------

Recommended Clearances for Access: Inspection Doors 18"; Controls 24"; Electrical Panel 30: Additional Space may be required by Local Codes

Note: All of the above dimensions are for a standard trim model. Due to continuous improvements, specifications are subject to change without notice