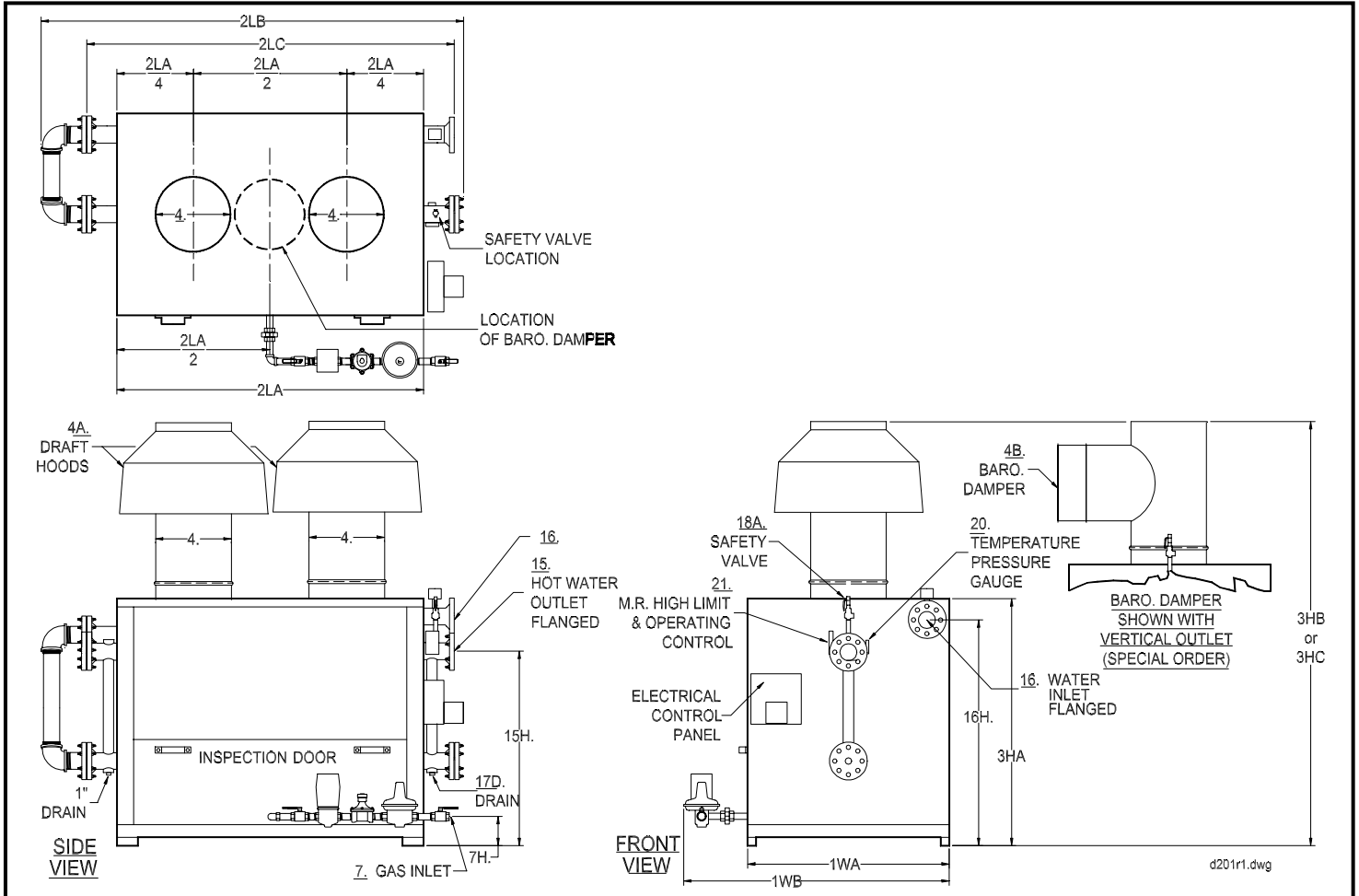


PARKER DIRECT FIRED HOT WATER BOILER
T2970R TO T3900R - ATMOSPHERIC GAS FIRED

D-201R-I
OD1



NO.	ITEM	MODEL NO.	T2970R	T3600R	T3900R
A	BTU Input	1000's BTU/HR.	2970	3600	3900
B	BTU Output	1000's BTU/HR.	2435	2952	3198
C	Heating Surface	SQ. FT.	576	666	807
1WA	Width of Cabinet Only	IN.	48	54	54
1WB	Width Overall Including Controls	IN.	65	69	70
2LA	Length of Cabinet Only	IN.	73	77	86
2LB	Length Overall	IN.	106	114	123
2LC	Header Length less Blind Flanges	IN.	90	97	106
3HA	Height of Cabinet Only	IN.	62	64	64
3HB	Height Overall Including Draft Hood(s) - (Standard)	IN.	102	106	106
3HC	Ht. Overall Inclu. Baro. Damper (Vert./Horiz. Outlet)(Spec. Order)	IN.	96/94	98/98	104/104
4A	Vent Stack Diameter with Draft Hood(s) - (Standard)	IN.	(2) 18	(2) 18	(2) 18
4B	Vent Stack Diameter with Barometric Damper	IN.	(1) 18	(1) 20	(1) 22
7A	Std. Nat. Gas Inlet Size	IN.	2	2-1/2	2-1/2
7A1	Std. Nat. Gas Inlet Supply Pressure; Max: 14" WC; Min. IN. WC		7	7	7
7A2	Nat. Gas Manifold Pressure at Burner	IN. WC	4	4	4
7B	Hi Press. Nat. & Propane Gas Inlet Size Supply Press. 1-5 PSI	IN.	1-1/2	1-1/2	1-1/2
7B1	Propane Manifold Pressure at Burner:	IN. WC	18	18	18
7H	Gas Inlet Height From Floor	IN.	7	19	19
15	Hot Water Outlet Size (Class 150 Flanged)	IN.	4	5	5
15H	Hot Water Outlet Height From Floor	IN.	46	47	47
16	Water Inlet Size (Class 150 Flanged)	IN.	4	5	5
16H	Water Inlet Height From Floor	IN.	56	58	58
17D	Drain Openings (1" Inlet Side of Boiler)	Outlet Side IN.	1-1/2	1-1/2	1-1/2
18AHP	Safety Relief Valve Drain Size-125 PSI, 250°F, "H" Code	OUTLET IN.	1-1/2	2	2
18ALP	Safety Relief Valve Drain Size- 30 PSI, 250°F, "H" Code	OUTLET IN.	(2) 2	(2) 2-1/2	(2) 2-1/2
J	Water Capacity	GAL.	71	90	103
K	Net Weight of Boiler	LBS.	4323	4961	5676
L	Domestic Crated Shipping Weight of Boiler	LBS.	4723	5386	6126

MINIMUM LISTED CLEARANCES TO COMBUSTIBLE CONSTRUCTION:	12" Cabinet Sides & Rear	48" Cabinet Top	6" Draft Hood Vent Connector	12" Baro. Damper Chimney Connector
--	-----------------------------	--------------------	---------------------------------	---------------------------------------

Recommended Clearances for Access: Inspection Doors 18"; Controls 24"; Electrical Panel 30"; Additional Space may be required by Local Codes
Note: All of the above dimensions are for a standard trim model. Due to continuous improvement, specifications are subject to change without notice.