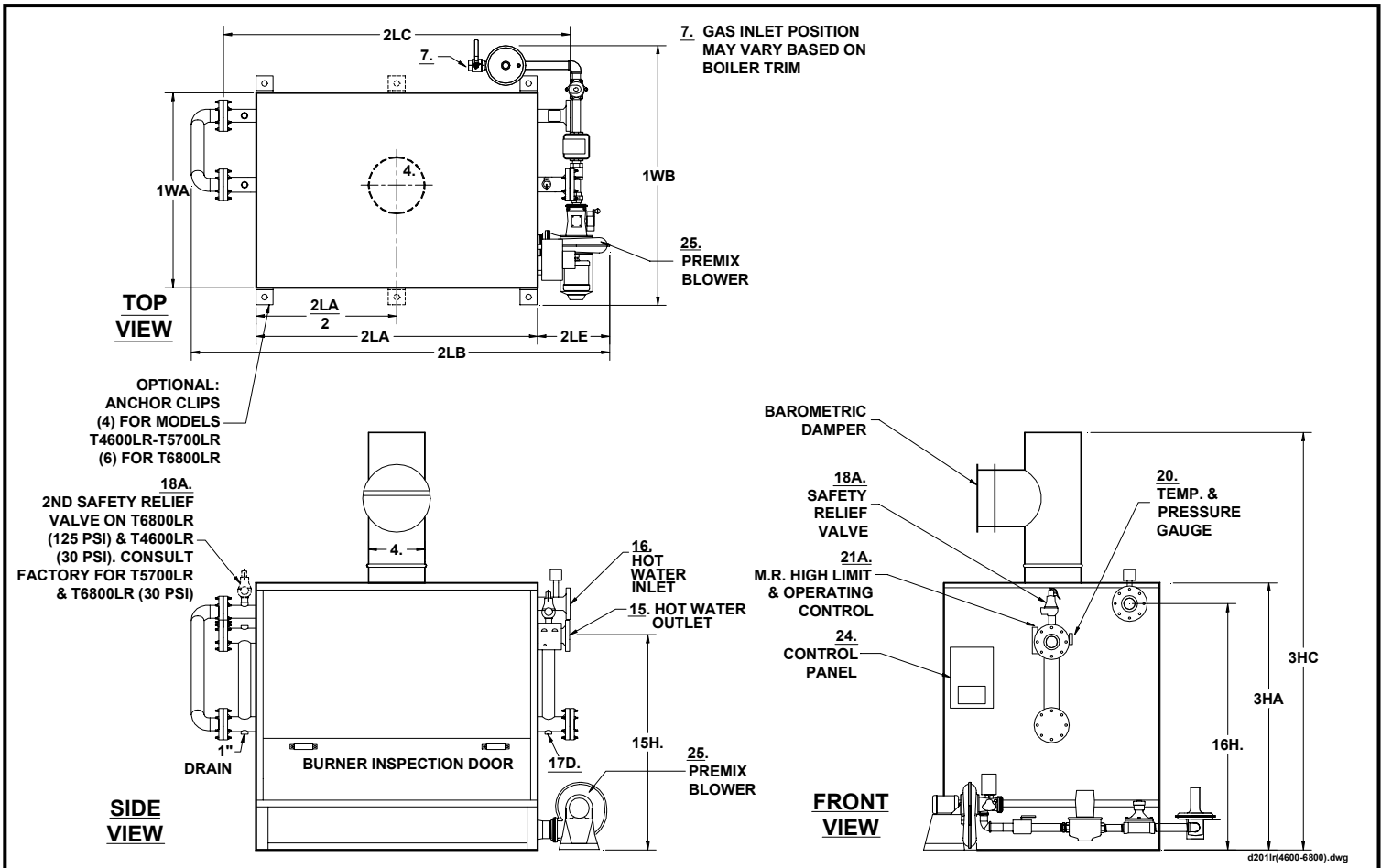


PARKER HIGH EFFICIENCY, LOW NOx BOTTOM MOUNTED DIRECT FIRED HOT WATER BOILER
 T4600LR TO T6800LR - PREMIX BLOWER GAS FIRED
 W/FINISHED CONVECTIVE SECTION

SPEC. SHEET
 D-201LR-I
 0A3



NO.		MODEL NO.	T4600LR	T5700LR	T6800LR
A	BTU Input	1000's BTU/HR.	4600	5700	6300
B	BTU Output (84%)	1000's BTU/HR.	3864	4788	5292
C	Heating Surface	SQ.	951	1087	1330
1WA	Width of Cabinet Only	IN.	54	55	55
1WB	Width Overall **	IN.	78	79	79
2LA	Length of Cabinet Only	IN.	102	119	145
2LB	Length Overall	IN.	148	174	202
2LC	Header Length less Blind Flanges	IN.	121	138	168
2LE	Length of Blower Beyond Cabinet	IN.	26	29	30
3HA	Height of Cabinet Only	IN.	72	73	73
3HC	Height Overall with Barometric Damper & Vertical Tee Assembly	IN.	112	113	113
4	Vent Stack Diameter	IN.	22	26	26
7A	Std. Nat. Gas Inlet Size	IN.	3	3	3
7A1	Std. Nat. Gas Inlet Supply Pressure; Max: 14" WC; Min: ___ "W.C.	IN. WC	7	10	10
7B	Hi Press. Nat. Gas or LPG Gas Inlet Size Supply Press. 1-5 PSI	IN.	2	2	2
15	Hot Water Outlet Size	(Class 150 Flanged) IN.	5	6	6
15H	Hot Water Outlet Height From Floor	IN.	55	56	56
16	Water Inlet Size	(Class 150 Flanged) IN.	5	6	6
16H	Water Inlet Height From Floor	IN.	66	67	67
17D	Drain Openings (1" Return Side of Boiler)	Outlet Side IN.	1-1/2	2	2
18AHP	Safety Relief Valve Drain Size-125 PSI, 250°F, "H" Code OUTLET	IN.	2	2	(2) 2
18ALP	Safety Relief Valve Drain Size- 30 PSI, 250°F, "H" Code OUTLET	IN.	(2) 2-1/2	CF	CF
20A	Power Specifications		(1) 3 Phase and (1) 115V – 1Phase		
20B	Controls (115V-1Ph-60Hz)		5 Amps		
21	Blower HP (3Ph/60Hz)		2 HP	3 HP	3 HP
J	Water Capacity	GAL.	120	143	162
K	Net Weight of Boiler	LBS.	7570	8930	10750
L	Domestic Crated Shipping Weight of Boiler	LBS.	8170	9750	11725
MINIMUM LISTED CLEARANCES TO COMBUSTIBLE CONSTRUCTION:		12"	48"	6"	12"
		Cabinet Sides & Rear	Cabinet Top	Draft Hood Vent Connector	Baro. Damper Chimney Connector
Recommended Clearances for Access: Inspection Doors 18"; Controls 24"; Electrical Panel 36"; Additional Space may be required by Local Codes					

** - Width & gas inlet position may vary based on boiler trim. CF – Consult Factory
 Note: Due to continuous improvements, specifications are subject to change without notice.