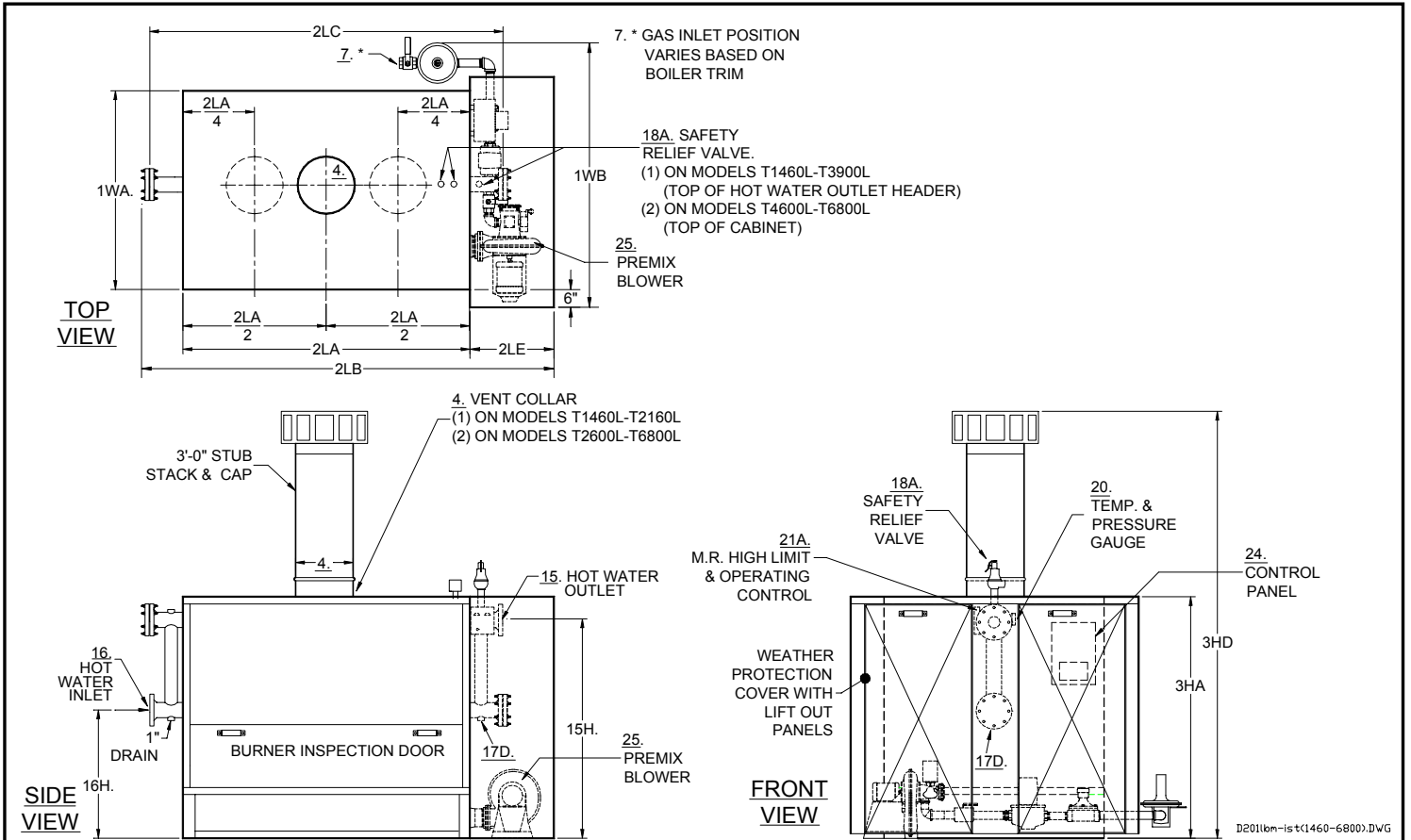


**PREMIX METAL FIBER LOW NOx  
PARKER DIRECT FIRED HOT WATER BOILERS  
MODELS T1460L TO T6800L - BOTTOM MOUNTED MANIFOLD, STUB STACK & CAP, OUTDOOR SERVICE**



NO.	ITEM	T1460L	T1730L	T1995L	T2160L	T2600L	T2970L	T3600L	T3900L	T4600L	T5700L	T6800L	
A	BTU Input	1000's BTU/HR.	1460	1730	1995	2160	2600	2970	3600	3900	4600	5700	6300
B	BTU Output	1000's BTU/HR.	1168	1384	1596	1728	2080	2376	2880	3120	3680	4560	5040
C	Heating Surface	SQ. FT.	193	220	285	285	337	364	440	493	573	678	840
1WA	Width of Cabinet Only	IN.	32	38	38	38	38	48	54	54	54	55	55
1WB	Width Overall w/Weather Protection*	IN.	50	50	50	50	50	69	77	77	77	78	78
2LA	Length of Cabinet Only	IN.	62	59	73	73	83	73	77	86	102	119	145
2LB	Length Overall	IN.	96	94	110	110	118	110	116	125	141	160	190
2LE	Length of Weather Protection beyond Cabinet	IN.	26	26	26	26	26	26	26	26	26	32	32
3HA	Height of Cabinet Only	IN.	62	62	62	62	62	62	64	64	64	65	65
3HD	Height Overall w/3'-0" Stub Stack & Cap	IN.	118	118	121	121	117	118	120	120	123	126	127
4	Vent Stack Diameter	IN.	16	16	18	18	20	(2) 16	(2) 18	(2) 18	(2) 18	(2) 20	(2) 22
7A	Std. Nat. Gas Inlet Size	IN.	1.5	2	2	2	2	2	2.5	2.5	3	3	3
	Std. Nat. Gas Inlet Supply Pressure; Max: 14" WC; Min: " WC	IN. WC	7	7	7	7	7	7	7	7	10	10	10
7B	Hi Pressure Natural Gas or LP Gas Inlet Size, Supply Pressure 1-5 PSI	IN.	1.5	1.5	1.5	1.5	1.5	1.5	1.5	1.5	2	2	2
15	Hot Water Outlet Size (Flanged)	IN.	3	4	4	4	4	4	5	5	5	6	6
15H	Hot Water Outlet Height From Floor	IN.	56	56	56	56	56	56	55	55	55	56	56
16	Water Inlet Size (Flanged)	IN.	3	4	4	4	4	4	5	5	5	6	6
16H	Water Inlet Height From Floor	IN.	30	30	30	30	30	30	29	29	29	30	30
17D	Drain Line Size Required	IN.	1.25	1.25	1.5	1.5	1.5	1.5	1.5	1.5	1.5	2	2
18AHP	Safety Relief Valve Size- 125 PSI	OUTLET IN.	1	1	1	1.25	1.25	1.25	1.5	1.5	(2) 1.5	(2) 1.5	(2) 1.5
18ALP	Safety Relief Valve Size- 30 PSI	OUTLET IN.	1.5	2	2	2	2	2.5	2.5	2.5	(2) 2	(2) 2	(2) 2.5
24	Power Specifications	115V-1 Ph	(2 Separate Services Required) Required (1) 3 Phase, (1) 115V-1 Phase										
25	Blower HP (3 Phase, 60 Cycle)	HP	1/3	3/4	1			1.5	2	3			
	Controls (115V - 1 Phase, 60 Cycle)		5 AMPS										
	Water Capacity	GAL.	27	34	43	43	49	53	67	75	90	110	135
	Net Weight Boiler - Approximate	LBS.	2480	2640	3090	3090	3540	3940	4590	5170	6540	7430	8900
	Crated Shipping Weight of Boiler - Approx.	LBS.	2680	2890	3390	3390	3890	4340	5020	5620	7110	8130	9830
MINIMUM LISTED CLEARANCES TO COMBUSTIBLE CONSTRUCTION:			12"					48"					
			Cabinet Sides & Rear					Cabinet Top					
Recommended Clearances for Access: Inspection Doors 18"; Controls 24"; Electrical Panel 36"; Additional Space may be required by Local Codes													

\* Note: Width & Gas Inlet Position vary based on Boiler Trim. Note: Due to continuous improvements, specifications are subject to change without notice.