

# PARKER HEAT RECLAIMER INSTALLATION DRAWING AND CIRCULATING FLOW DIAGRAM

**NOTES:**








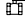

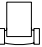

- 1) HEAT RECLAIMER MUST HAVE A MIN. ENT. WATER TEMP OF 105°F. IF NOT, A TEMPERING VALVE MUST BE INSTALLED ON RECLAIMER.
- 2) LINE SIZES FOR RECLAIMER SHOULD BE 3/4" FOR EM8-12, 1" FOR EM14-28

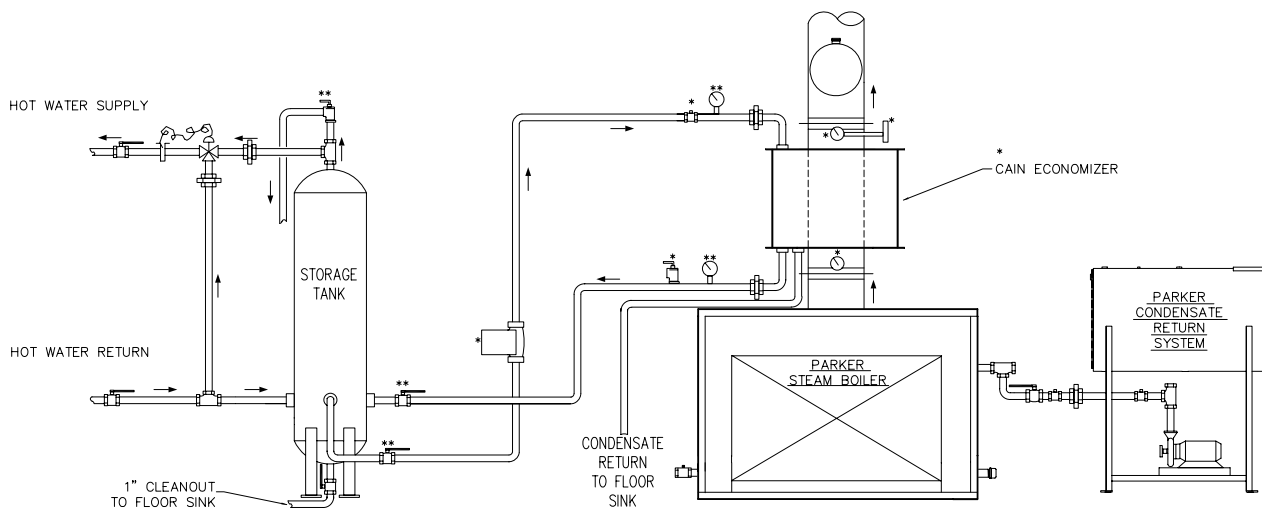
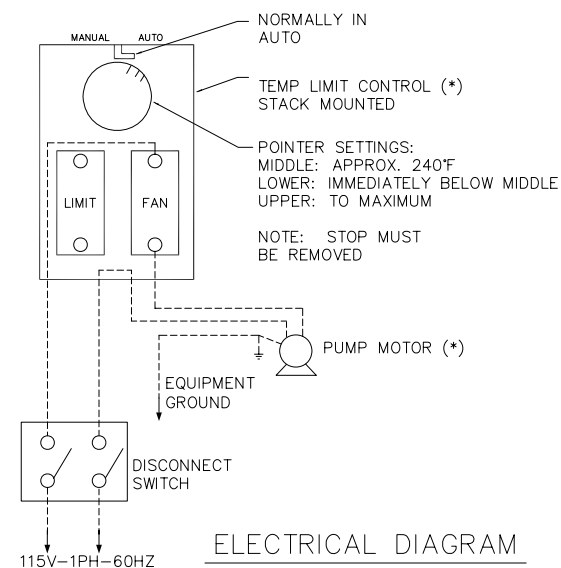
\*=FURNISHED WITH PARKER KIT  
\*\*=FURNISHED WITH PARKER ACCESSORY KIT

ITEMS W/O "\*" OR "\*\*" ARE NOT FURNISHED

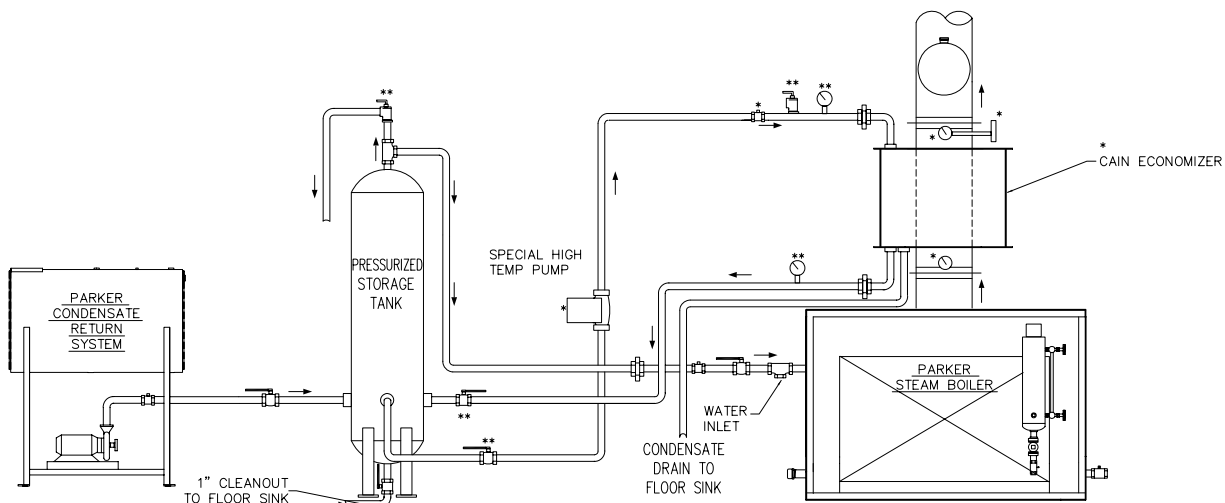
STACK ADAPTERS WHEN REQUIRED ARE FURNISHED STANDARD W/KIT

PIPE ALL SAFETY VALVES TO SAFE POINT OF DISCHARGE

- |   |  |   |  |   |                                  |
|---|--|---|--|---|----------------------------------|
|  | UNION  |  | TEE  |  | CHECK VALVE                      |
|  | STACK THERMOMETER  |  | RELIEF VALVE, (PIPED TO SAFE POINT OF DISCHARGE) |  | FLOW WHEN SYSTEM IS IN OPERATION |
|  | TEMPERATURE GAUGE  |  | SHUT OFF VALVE                                   |  | TEMPERING VALVE & CAPILLARY      |
|  | CIRCULATING PUMP:<br>REFER TO PUMP<br>MANUFACTURER'S INSTRUCTIONS<br>FOR PROPER ORIENTATION,<br>PIPING, AND WIRING<br>INSTRUCTIONS |  | CIRCULATING PUMP CONTROL                         |   |                                  |



STEAM BOILER WITH HOT WATER STORAGE TANK  
(RECOMMENDED FOR STEADY OR CONTINUOUS HOT WATER LOADS)



STEAM BOILER W/PRESSURIZED TANK FOR BOILER WATER PREHEAT

# PARKER HEAT RECLAIMER INSTALLATION DRAWING AND CIRCULATING FLOW DIAGRAM

NOTES: 1) HEAT RECLAIMER MUST HAVE A MIN. ENT. WATER TEMP OF 105°F. IF NOT, A TEMPERING VALVE MUST BE INSTALLED ON RECLAIMER.

2) LINE SIZES FOR RECLAIMER SHOULD BE 3/4" FOR EM8-12, 1" FOR EM16-28

\*=FURNISHED WITH PARKER KIT

\*\*=FURNISHED WITH PARKER ACCESSORY KIT

ITEMS W/O "\*" OR "\*\*" ARE NOT FURNISHED

STACK ADAPTERS WHEN REQUIRED ARE FURNISHED STANDARD W/KIT

PIPE ALL SAFETY VALVES TO SAFE POINT OF DISCHARGE

UNION TEE CHECK VALVE

FLOW WHEN SYSTEM IS IN OPERATION

SHUT OFF VALVE OR BALANCING VALVE

TEMPERATURE GAUGE STACK THERMOMETER

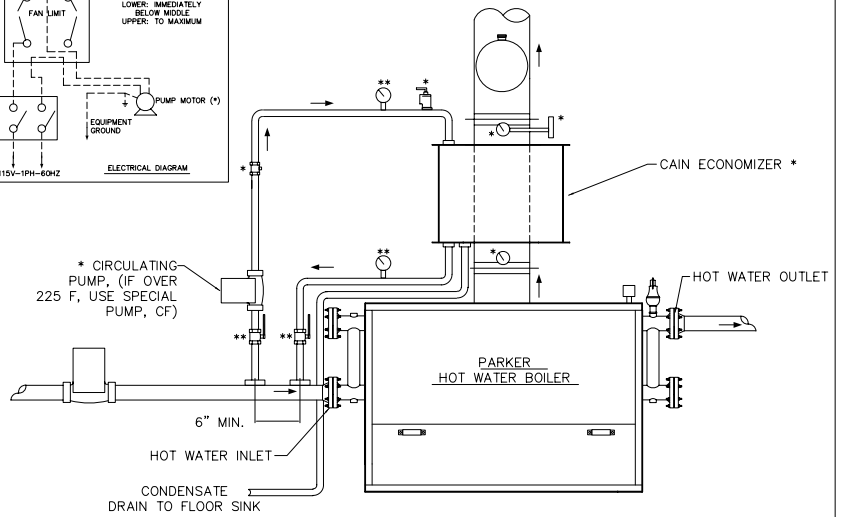
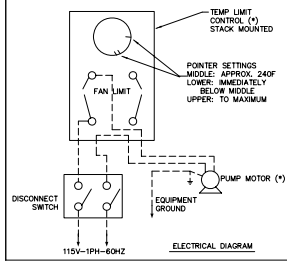
CIRCULATING PUMP: REFER TO PUMP MANUFACTURER'S INSTRUCTIONS FOR PROPER ORIENTATION, PIPING, AND WIRING INSTRUCTIONS

RELIEF VALVE, (PIPED TO SAFE POINT OF DISCHARGE)

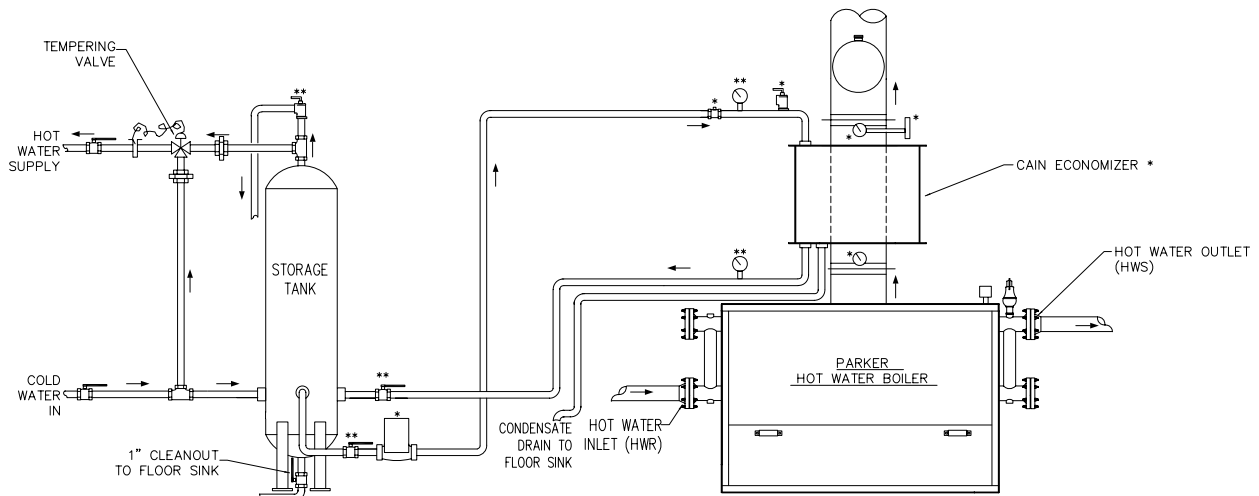
TEMPERING VALVE & CAPILLARY

CIRCULATING PUMP CONTROL

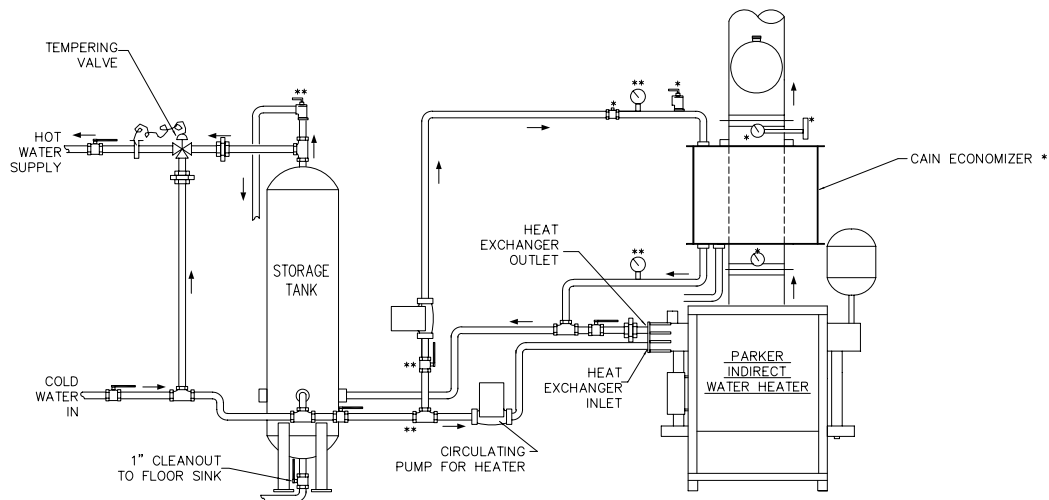
CF = CONSULT FACTORY



HYDRONIC HEATING SYSTEM WITH PREHEAT



HOT WATER BOILER WITH STORAGE TANK



INDIRECT WATER HEATER WITH STORAGE TANK

\* THESE ARE IN THE STANDARD HEAT RECLAIMER KIT