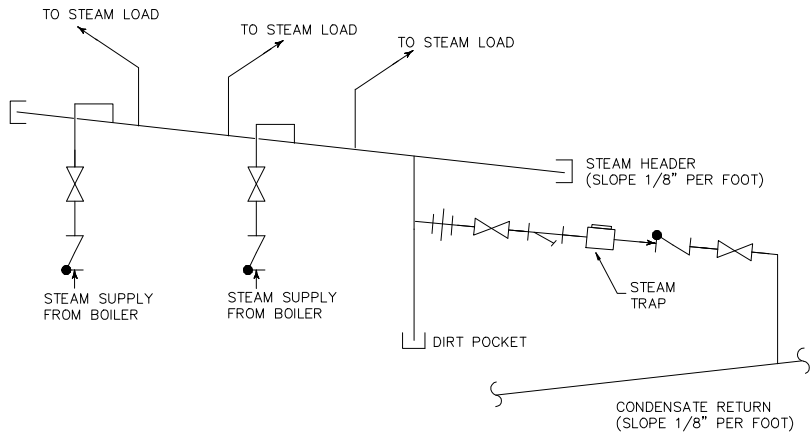
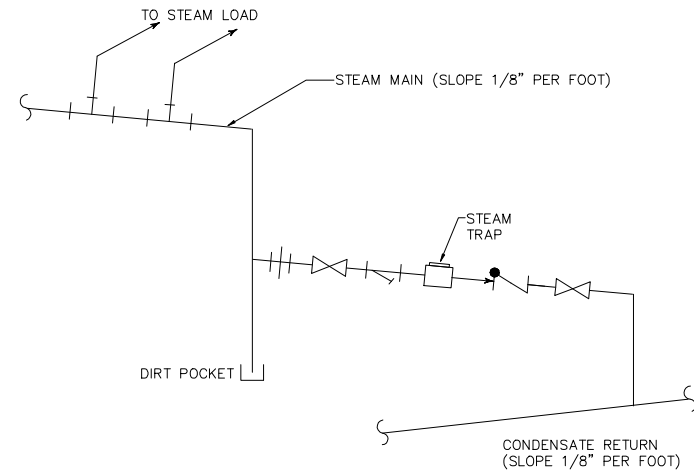


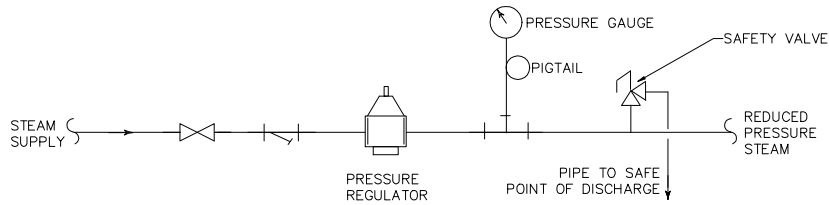
# PARKER BOILER – RECOMMENDED STEAM PIPING



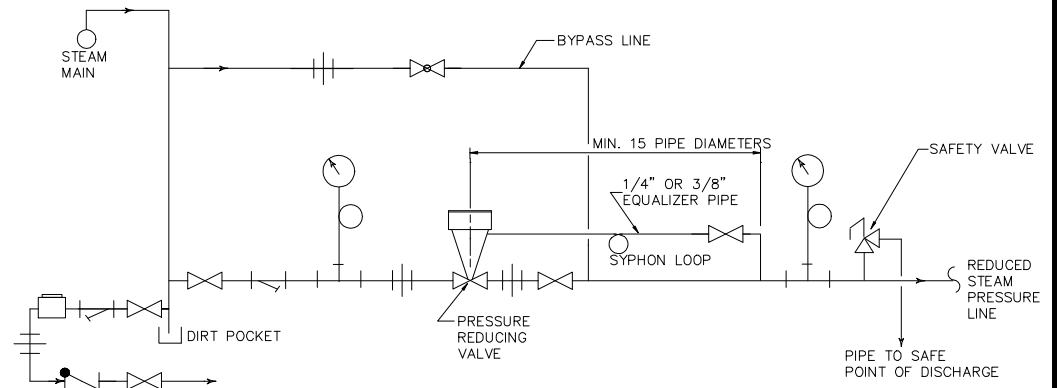
TYPICAL STEAM HEADER



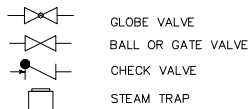
TYPICAL END OF STEAM MAIN DRIP



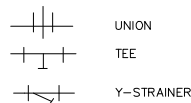
PRESSURE REDUCING ASSEMBLY



PRESSURE REDUCING VALVE STATION WITH SENSOR



KEY TO SYMBOLS

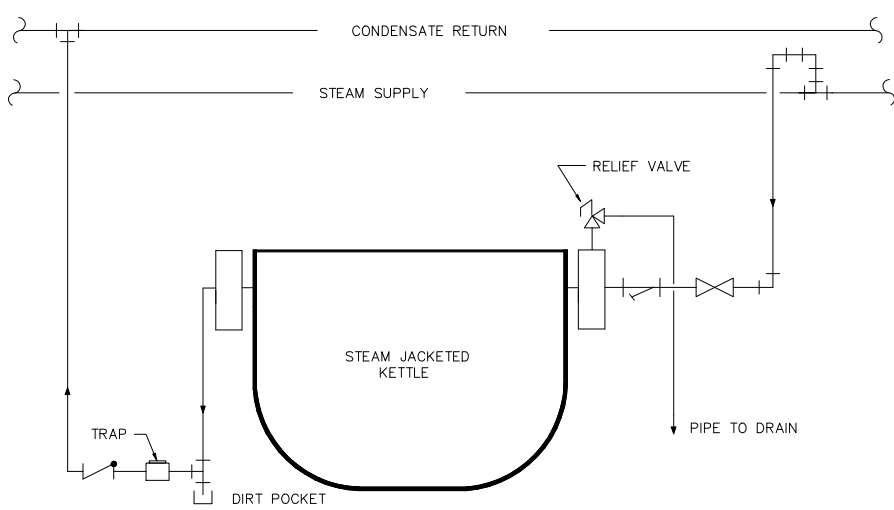


NOTE: SLOPE ALL STEAM AND CONDENSATE PIPING 1/8" PER FOOT IN DIRECTION OF FLOW.

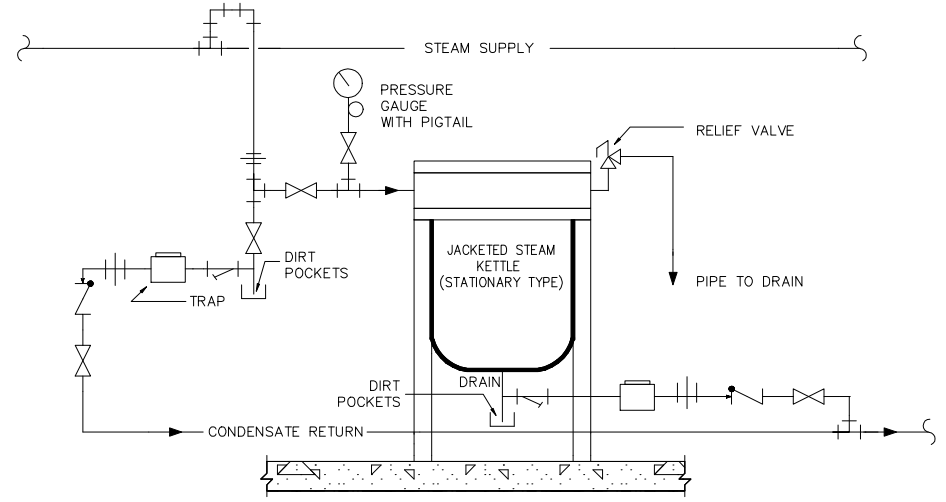
USED ON 1-1/2 TO 150 HP STEAM BOILERS		PART NAME TYPICAL STEAM PIPING DETAILS	
PARKER STEAM BOILERS – RECOMMENDED STEAM PIPING			
DR. ABB	DATE 6D	PARKER BOILER CO. 5930 BANDINI BLVD. LOS ANGELES, CA 90040	SCALE CADD DRWG.
CH.			SUPERCEDES NO. 6C
APPROVED			DWG. NO. 101-105-RSP1

101-5RSP1.DWG

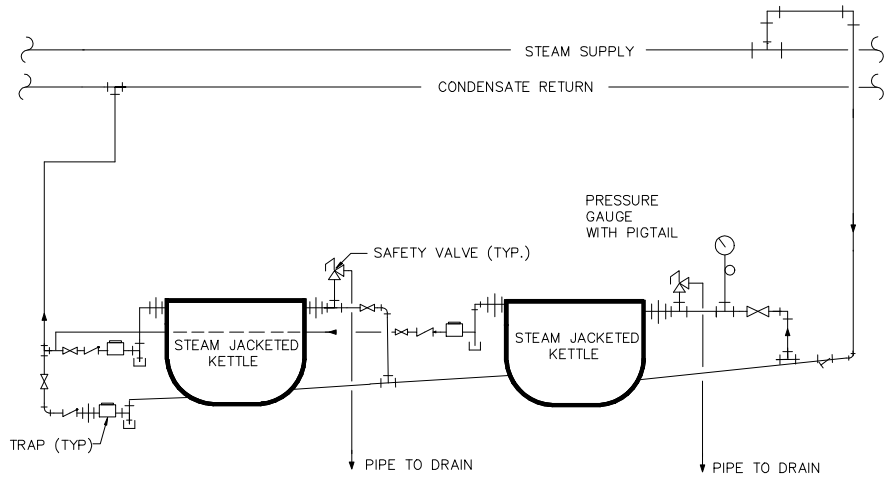
# PARKER BOILER – RECOMMENDED STEAM PIPING



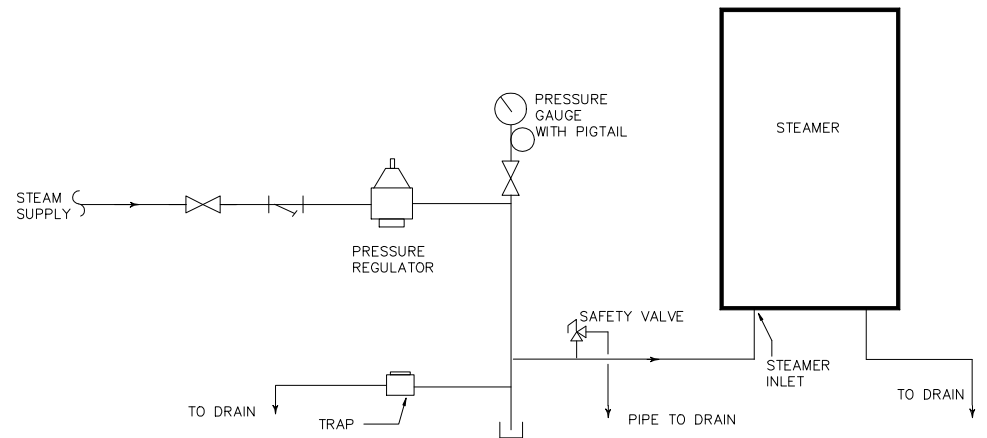
**TYPICAL TILTING JACKETED STEAM KETTLE**



**TYPICAL STATIONARY JACKETED STEAM KETTLE**



**MULTIPLE STEAM KETTLES—STATIONARY OR TILTING**



**TYPICAL STEAMER PIPING**

- GLOBE VALVE
- BALL OR GATE VALVE
- CHECK VALVE
- STEAM TRAP

### KEY TO SYMBOLS

- UNION
- TEE
- Y-STRAINER

NOTE: SLOPE ALL STEAM AND CONDENSATE PIPING 1/8" PER FOOT IN DIRECTION OF FLOW.

USED ON 1-1/2 TO 150 HP STEAM BOILERS		PART NAME TYPICAL STEAM PIPING DETAILS	
FOR PARKER STEAM BOILERS – RECOMMENDED STEAM PIPING			
DR. ABB	DATE 6D	PARKER BOILER CO. 5930 BANDINI BLVD. LOS ANGELES, CA 90040	SCALE CADD DRWG.
CH. MJL	6C		SUPERCEDES NO. 6C
APPROVED			DWG. NO. 101-105-RSP2