

INSTALLATION AND MAINTENANCE INSTRUCTIONS PARKER INDUSTRIAL HORIZONTAL DRUM STEAM BOILERS 70 - 150 H.P. GAS FIRED

BEFORE INSTALLING THE BOILER, BE CERTAIN TO CAREFULLY READ THE "GENERAL BASIC INSTALLATION INSTRUCTIONS" ON STEAM BOILERS AS THESE ARE PREREQUISITES TO THE INSTRUCTIONS THAT FOLLOW. FOR BLOWDOWN CONNECTIONS AND RETURN SYSTEMS, SEE SEPARATE DETAILED INSTRUCTION SHEETS.

IN ORDER TO RECEIVE THE BEST OPERATING LIFE AND EFFICIENCY FROM YOUR PARKER INDUSTRIAL BOILER, IT IS ESSENTIAL TO FOLLOW THE MANUFACTURER'S MINIMUM STANDARDS AND ANY ADDITIONAL REQUIREMENTS OF LOCAL AND STATE CODES. THE DIAGRAM FURNISHED ILLUSTRATES THE RECOMMENDED PROCEDURE FOR PROPER INSTALLATION OF THE BOILER AND EQUIPMENT. THE EQUIPMENT SHOULD BE INSTALLED IN LOCATION FOR ACCESSIBILITY AND EFFICIENT OPERATION. THE BOILER MUST BE INSTALLED ON A NON-COMBUSTIBLE SURFACE.

4 & 5 VENT STACK: CAREFULLY REVIEW THE "GENERAL BASIC INSTALLATION INSTRUCTIONS, PARAGRAPH VI" FOR THE GENERAL REQUIREMENTS FOR A PROPER AND SAFE VENT. THE 4B DRAFT CONTROL FURNISHED MUST BE INSTALLED ON THE BOILER VENT OUTLET IN THE SAME ROOM WITH THE BOILER. THE 5A VENT MUST BE RUN OUTSIDE THE BUILDING IN ACCORDANCE WITH ALL CODE REQUIREMENTS. A FULL SIZE NON-RESTRICTIVE 5C VENT CAP IS REQUIRED ON TOP OF THE STACK. DO NOT SUPPORT WEIGHT OF VENT STACK ON BOILER.

7G GAS SUPPLY: THE METER AND GAS LINE SHOULD BE ADEQUATE SIZE TO ACCOMMODATE THE BTU CAPACITY OF THE BURNER AS SHOWN ON THE SPECIFICATION SHEET, ITEM 7C. THE GAS LINE SHOULD BE INSTALLED IN COMPLIANCE WITH LOCAL CODE. SEE "GENERAL BASIC INSTALLATION INSTRUCTIONS, PARAGRAPH VIII" FOR INFORMATION ON GAS SUPPLY.

ON NATURAL GAS, AN INLET PRESSURE OF 10" TO 27.7" W.C. IS DESIRABLE. A 7GPR GAS PRESSURE REGULATOR IS STANDARDLY FURNISHED TO REDUCE INLET PRESSURE TO THE DESIRED BURNER PRESSURE. THE REGULATOR SHOULD BE SET FOR 4" W.C. PRESSURE AT THE BURNER ORIFICE WHILE THE BURNER IS ON AT FULL RATE FOR THE PROPER BOILER CAPACITY. ON INLET PRESSURE EXCEEDING 27.7", A PROPER HIGH GAS PRESSURE REGULATOR MUST BE INSTALLED. ON INLET PRESSURES BELOW 10", CONSULT FACTORY.

ON LIQUID PETROLEUM GAS, 22" TO 27.7" W.C. IS RECOMMENDED AT THE BURNER MANIFOLD INLET AND 20" W.C. PRESSURE IS REQUIRED AT THE BURNER SPUD WHEN THE BURNER IS ON AT FULL RATE. A SEPARATE PILOT LINE GAS PRESSURE REGULATOR IS FURNISHED AND SHOULD REMAIN SET FOR 11" W.C. AT THE PILOT BURNER EVEN THOUGH 20" IS REQUIRED AT THE MAIN BURNER.

TWO 7GC GAS COCKS ARE STANDARDLY FURNISHED AND AN ADDITIONAL GAS COCK (NOT FURNISHED) IS REQUIRED TO BE INSTALLED CONVENIENTLY NEAR THE BOILER. GAS LINES SHOULD BE BLOWN OUT BEFORE CONNECTING TO THE BOILER AND A 7DL DRIP LEG SHOULD BE INSTALLED AT THE LOW POINT ON THE GAS LINE JUST BEFORE CONNECTING TO THE BOILER CONTROLS.

9 STEAM LINE: CONNECT FROM TOP REAR OF BOILER TO EQUIPMENT WITH 9A STEAM VALVE (NOT FURNISHED) INSTALLED CONVENIENTLY NEAR BOILER. 9C CHECK VALVE (NOT FURNISHED) RECOMMENDED TO BE INSTALLED NEAR STEAM VALVE. STEAM LINE SHOULD BE PROPERLY SIZED IN ACCORDANCE WITH STANDARD ENGINEERING PRACTICES AND MAY BE INCREASED AFTER LEAVING THE STEAM OUTLET. SHOULD BE GRADED DOWNWARD 1/8" PER FOOT WITH A STEAM TRAP INSTALLED AT THE LOW POINT. IT IS CONSIDERED GOOD PRACTICE TO INSULATE ALL STEAM LINES TO REDUCE RADIATION LOSS.

10 WATER FEED LINE: TWO PUMPS ARE STANDARDLY FURNISHED AND ALWAYS RECOMMENDED ON THIS SIZE BOILER. THE MAIN WATER FEED LINE SHOULD BE CONNECTED FROM THE PUMP DISCHARGE LINES TO THE BOILER AT LEAST 1-1/2" SIZE AND INCREASED IF OVER 10' IN LENGTH. THE PUMP DISCHARGE LINES SHOULD BE PIPED FULL 1" SIZE FROM THE 10C CHECK VALVES TO THE MAIN WATER FEED LINE ON BOILERS 70 TO 90 H.P. AND FULL 1-1/4" SIZE ON BOILERS 115 TO 150 H.P. A 10C CHECK VALVE, 10PA PUMP DISCHARGE SHUTOFF VALVE (NOT FURNISHED), AND A UNION SHOULD BE INSTALLED NEAR EACH BOILER FEED PUMP. AN ADDITIONAL 10C CHECK VALVE (NOT FURNISHED) SHOULD BE INSTALLED NEAR THE BOILER. A 10A SHUTOFF VALVE (NOT FURNISHED) MUST BE INSTALLED NEAR THE BOILER. BOTH VALVES 10A AND 10PA MUST BE OPEN AT ALL TIMES THE PUMP OR BOILER ARE IN OPERATION. 10D RELIEF VALVES (NOT FURNISHED) SHOULD BE INSTALLED ON EACH PUMP DISCHARGE LINE ON THE PUMP SIDE OF THE CHECK VALVES TO PROTECT THE PUMPS IN EVENT OF RESTRICTION OR STOPPAGE IN THE DISCHARGE LINE.

12A SAFETY VALVE: ONE FURNISHED ON 70 H.P. BOILER, TWO ON 90 H.P. AND LARGER. INSTALL DIRECTLY ON TOP OF THE BOILER AS SHOWN AND CONNECT FULL SIZE DOWNWARD TO A SAFE LOCATION. IF PIPED UPWARD, A SMALL DRAIN LINE MUST BE PROVIDED AT THE LOW POINT. THE SAFETY VALVES ARE FURNISHED FACTORY SEALED FOR THE MAXIMUM WORKING PRESSURE OF THE BOILER AND TRIM. IF THE VALVES ARE REPLACED, ALWAYS REPLACE WITH VALVES WHICH HAVE THE SAME PRESSURE SETTING AND REQUIRED RELIEVING CAPACITY.

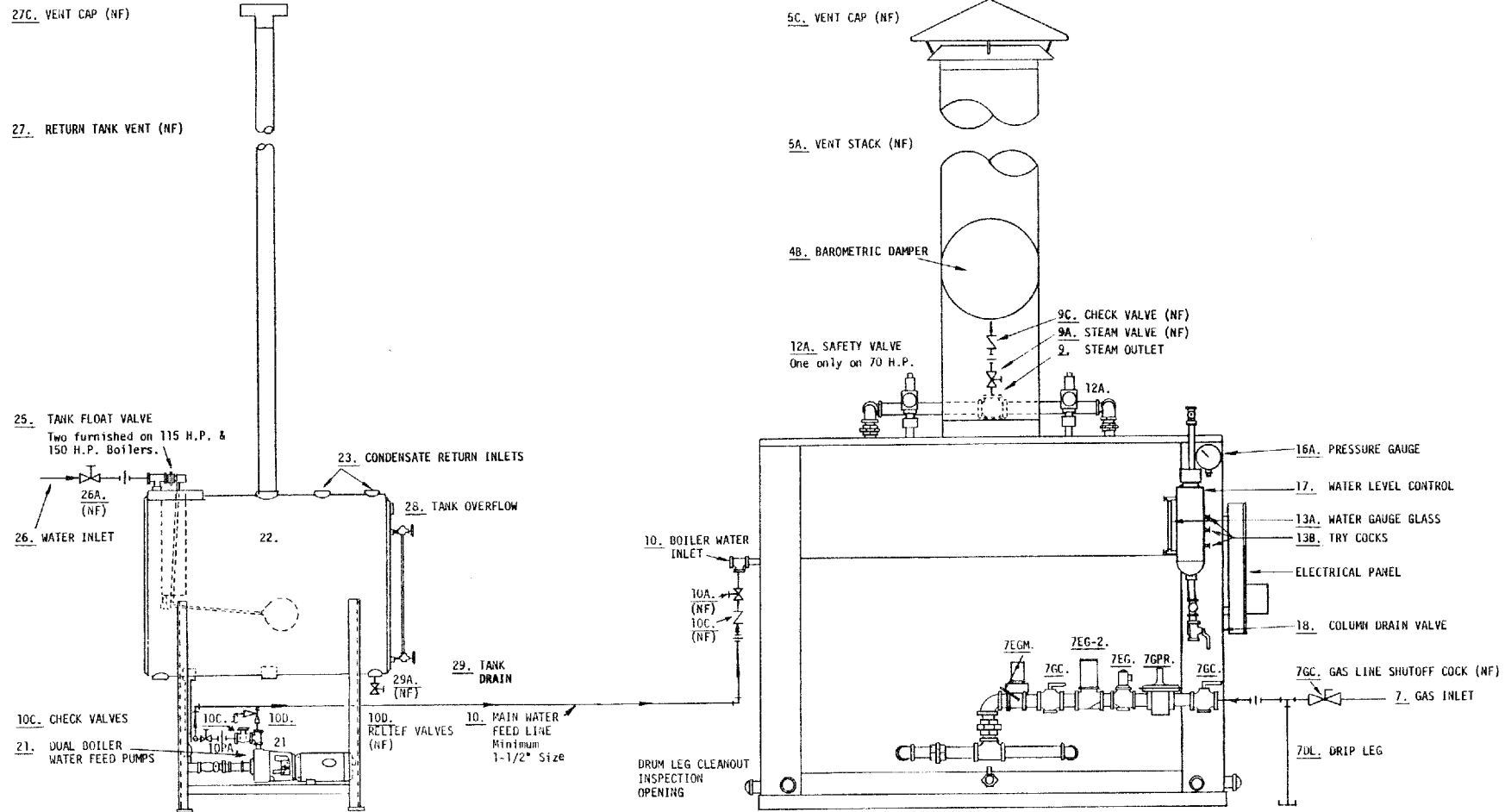
13A WATER GAUGE GLASS: GLASS INDICATES THE AMOUNT OF WATER IN THE BOILER WITH THE NORMAL LEVEL SLIGHTLY ABOVE CENTER. ON INITIAL START OF BOILER, THE WATER WILL EXPAND IN THE GLASS AND FLUCTUATE FROM HALF TO TWO-THIRDS OF THE GLASS UNDER NORMAL OPERATION. THE GAUGE GLASS VALVES SHOULD BE OPEN AT ALL TIMES. CHANGE GAUGE GLASS REGULARLY AND IMMEDIATELY ON INDICATION OF LEAKS OR WHEN IT BECOMES DIRTY. CHANGE ONLY WHEN THE BOILER IS NOT IN SERVICE BY CLOSING GAUGE VALVES, UNSCREWING HEXAGON NUTS AND REMOVING OLD GLASS AND GASKETS. INSTALL GLASS WITH NEW RUBBERS AND GASKETS ON BOTH SIDES OF RUBBERS. INSERT INTO UPPER GAUGE AND THEN CENTER EQUALLY INTO BOTH VALVES BEFORE TIGHTENING PACKING NUT. KEEP SPARE GLASSES, RUBBERS AND GASKETS.

13B TRY COCKS: FURNISHED FOR PURPOSE OF CHECKING WATER LEVEL IF GLASS IS BROKEN.

16A STEAM PRESSURE GAUGE: IS INSTALLED ON THE CABINET AS SHOWN AND IS FOR INDICATING THE STEAM PRESSURE IN THE BOILER.

17 WATER LEVEL PUMP CONTROL & LOW WATER CUTOFF: THIS CONTROL IS WIRED IN CONJUNCTION WITH MOTOR STARTING RELAYS TO THE BOILER FEED PUMPS TO INJECT WATER INTO THE BOILER AS REQUIRED. THE FIRST PUMP STARTS WHEN WATER IS REQUIRED AND THE SECOND PUMP STARTS AT A SLIGHTLY LOWER LEVEL. THE CONTROL IS ALSO WIRED IN SERIES WITH THE ELECTRIC GAS VALVES TO SHUT OFF THE MAIN BURNER ON LOW WATER EXPERIENCE AND SOUND AN ALARM. THE LOW WATER CONTROL SHOULD BE TESTED DAILY TO BE CERTAIN IT IS OPERATING SAFELY. THE 18A DRAIN VALVE SHOULD BE FLUSHED DAILY AND ALL CONNECTING LINES PERIODICALLY INSPECTED AND CLEANED.

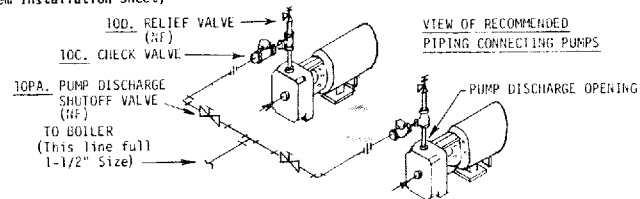
PARKER INDUSTRIAL HORIZONTAL DRUM STEAM BOILER 70 TO 150 H.P. GAS FIRED INSTALLATION DRAWING – FRONT VIEW – WITH WATER MAKE-UP AND CONDENSATE RETURN TANK



22. WATER MAKE-UP AND CONDENSATE RETURN TANK
(See separate Return System Installation Sheet)

PARKER INDUSTRIAL STEAM BOILER GAS FIRED - FRONT VIEW
(See separate Installation Drawing for Blowdown and Drain Lines.)

- SHUTOFF VALVE
- CHECK VALVE
- UNION
- (NF) NOT FURNISHED



USED ON 70 TO 150 H.P. STEAM BOILERS		PART NAME		INSTALLATION DRAWING	
FOR PARKER STEAM BOILER WITH WATER MAKE-UP AND CONDENSATE RETURN TANK					
DR	DW	DATE	12/75	PARKER BOILER CO. 5930 BANDINI BLVD. LOS ANGELES, CALIF. 90040-2999	
CH					
APPROVED				DWG. NO. 105-1 INST 2	