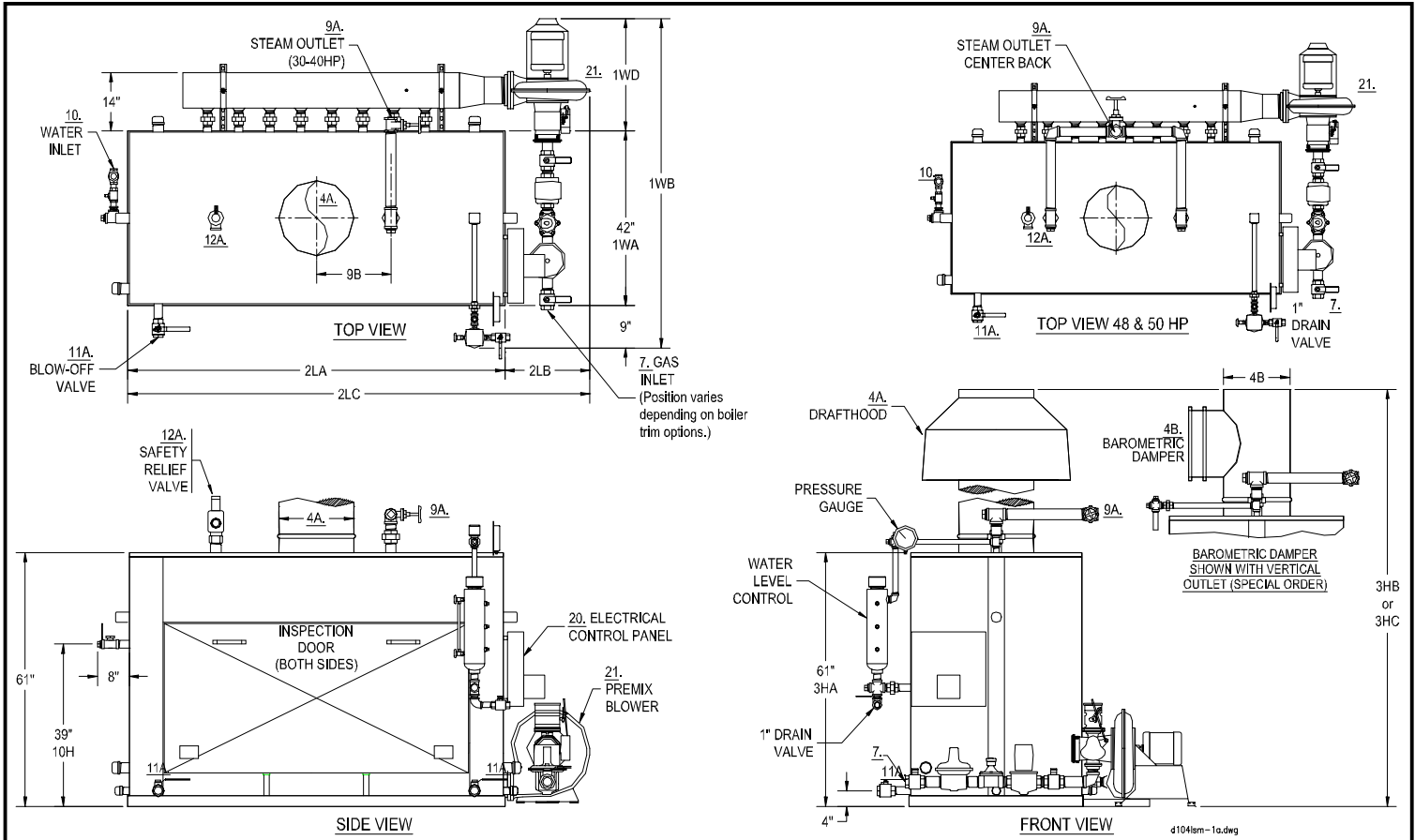


**PREMIX METAL FIBER LOW NOX  
PARKER GAS FIRED STEAM BOILERS  
MODELS 30L TO 50L – SIDE MOUNTED MANIFOLD**

SPEC. SHEET D-104L-ISM  
9C



NO.	MODEL NO. / HORSEPOWER		30L / 30	40L / 40	48L / 48	50L / 50
A	BTU Input	1000's BTU/HR.	1260	1680	1995	2100
B	BTU Output at rating from and at 212°F	1000's BTU/HR.	1008	1344	1596	1680
C	Heating Surface	SQ.FT.	172	232	278	278
D	Rated Steaming Capacity from and at 212°F	LBS./HR.	1035	1380	1656	1725
1WA	Width of Cabinet	IN.	42	42	42	42
1WB	Width Overall	IN.	74	74	77	77
1WD	Width of Premix Blower Beyond Cabinet	IN.	23	23	26	26
2LA	Length of Cabinet	IN.	59	73	91	91
2LB	Length of Premix Blower Beyond Cabinet	IN.	18	18	20	20
2LC	Length Overall	IN.	77	91	111	111
3HB	Height Overall Including Draft Hood (Std)	IN.	97	101	103	103
3HC	Height Overall Including Barometric Damper (Vert./Horiz Outlet) (Special Order)	IN.	87/83	89/86	91/90	91/90
4A	Vent Stack Diameter with Draft Hood (Std)	IN.	14	16	18	18
4B	Vent Stack Diameter with Barometric Damper (Special Order)	IN.	12	14	16	16
7A	Std. Nat. Gas Inlet Size @ Inlet Supply Pressure; Max.: 14" WC; Min.: 7"WC	IN.	1-1/2	2	2	2
7B	Hi Press. Nat. Gas or LPG Gas Inlet Size Supply Press. 1-5 PSI	IN.	1-1/2	1-1/2	1-1/2	1-1/2
9A HP	Steam Valve Size – High Pressure 60 to 250 PSI	IN.	1-1/4	1-1/2	2	2
9 LP	Steam Outlet Size – Low Pressure 15 PSI or less – (Special Order)	IN.	2-1/2	3	4 FLG.	4 FLG.
9B	Steam Outlet Location – From Center of Boiler	IN.	15	15	Center-Back	Center-Back
10	Water Inlet Size	IN.	1	1	1	1
11A	Blow-off Valve Size	IN.	(2) 1-1/4	(2) 1-1/4	(2) 1-1/2	(2) 1-1/2
12A	Saf. Valve Drain Size – High Press.; 100 PSI Std. / (15 PSI "H" Stamp Spec. Order)	IN.	1-1/2 / (2)	1-1/2 / (2)	2 / (2)	2 / (2)
20A	<b>Power Specifications</b> (2 Separate Services required, for Blower & Pump), Starters Provided on Panel For Blower & Pump					
20B	Boiler Feed Pump, HP, Voltage, & Phase Depends on Boiler Pressure (See Parker Spec. Sheet D-106-C)					
20C	Controls (115V-1Ph-60Hz) (Transformer Provided)					
21	Premix Blower HP (3Ph Unless Noted)	HP	1/3 (115v/1Ph)	3/4	1	1
J	Net Weight of Boiler	LBS.	2790	3620	4305	4305
L	Domestic Crated Shipping Weight of Boiler	LBS.	3040	3970	4680	4680
K	Same with Return System	LBS.	3560	4510	5220	5220
MINIMUM CLEARANCES TO COMBUSTIBLE CONSTRUCTION:			12"	48"	6"	12"
			Cabinet Sides & Rear	Cabinet Top	Draft Hood Vent Connector	Barometric Damper Chimney Connector
Recommended Clearances for Access: Inspection Doors 18" (One inspection door must be 28" for tube removal); Controls 24"; Electrical Panel 36"; Additional Space may be required by Local Codes						

Note: Due to continuous improvements, specifications are subject to change without notice.