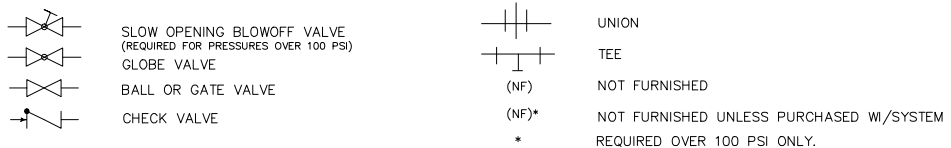


**SCHEDULE**

- SB**— PARKER MODEL \_\_\_\_\_ H.P. STEAM BOILER, \_\_\_\_\_ PSI RELIEF VALVE SETTING
- BFS**— PARKER MODEL R-\_\_\_\_-\_\_\_ BOILER FEED SYSTEM, \_\_\_V\_\_\_Ph
- BT**— PARKER MODEL BD\_\_\_\_\_ BLOWDOWN TANK
- WS**— PARKER MODEL FGA-\_\_\_\_-\_\_\_ AUTOMATIC WATER SOFTENER
- CF**— PARKER MODEL ST-\_\_\_\_\_ CHEMICAL FEEDER

CODE PIPING NOTES (See Parker Bulletin CR-ASME/ANSI)

- 1) All Steam Line piping, Valves and Fittings must be rated for not less than "MAWP" or \_\_\_\_\_PSI.
- 2) All Blowdown and Water Feed Line Piping, Valves and Fittings must be rated for "MAWP" plus 25% or \_\_\_\_\_ PSI. For pressures over 100 PSI threaded piping must be seamless steel equal to Schedule 80 and blowdown fittings must be forged steel. Pressures over 100 PSI require additional slow opening blowdown valve.\*
- 3) No Galvanized, Cast Iron or Copper for these services.



USED ON	PARKER STEAM SYSTEM		PART NAME	PIPING SCHEMATIC	104INST1.DWG
FOR	104 SERIES BOILERS (30 - 50 H.P.) SINGLE BOILER DIAGRAM				
DR.	MJL	DATE	3B	PARKER BOILER CO.	SCALE
CH.				5930 BANDINI BLVD.	CADD DRWG.
APPROVED				LOS ANGELES, CALIF. 90040	SUPERSEDES NO.
					DWG. NO. A-104-INST1-SYSTEM