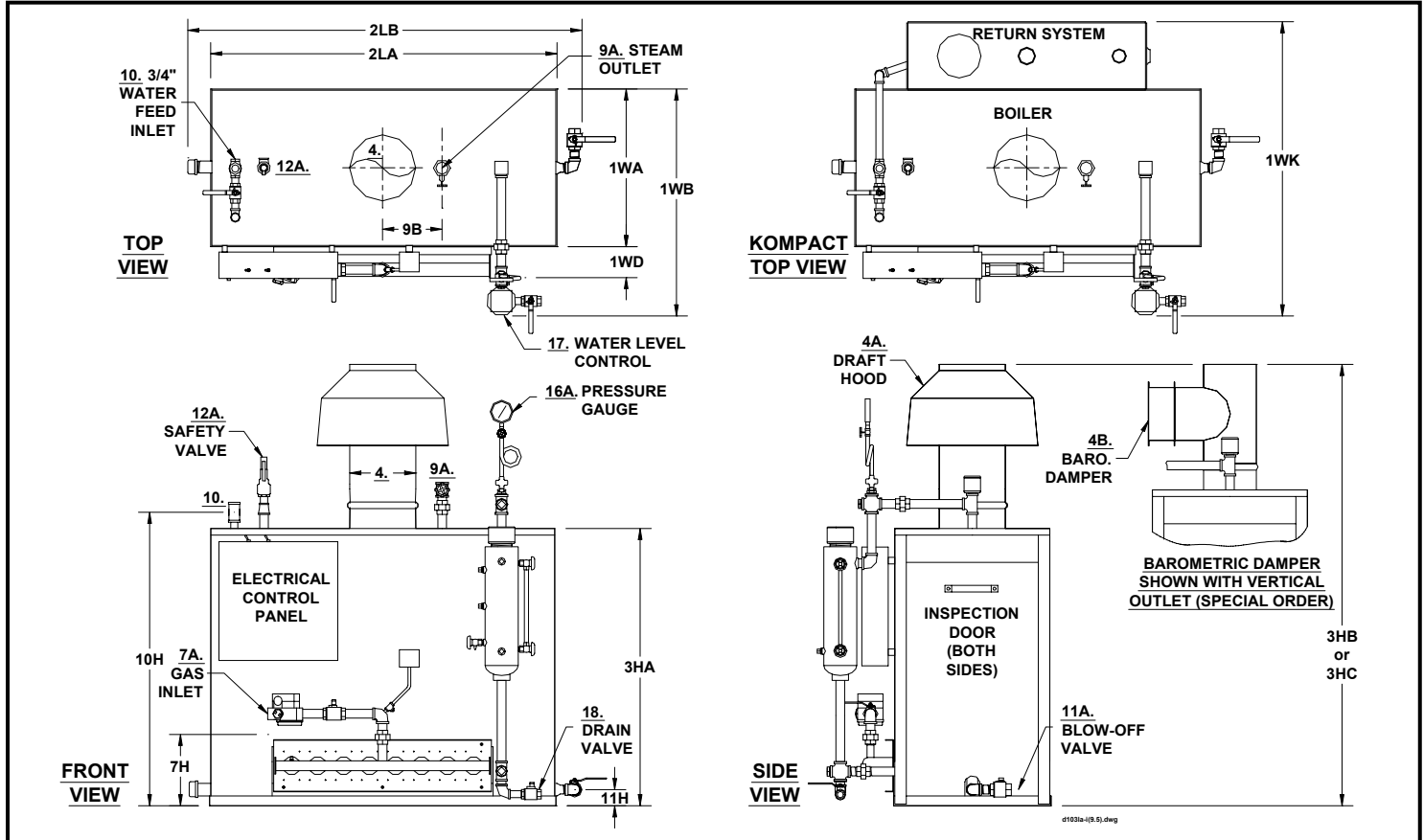


PARKER INDUSTRIAL HORIZONTAL DRUM STEAM BOILER SPEC. SHEET D-103LA-I  
 7LA & 9.5LA ATMOSPHERIC LOW NO<sub>x</sub> GAS FIRED "LA" SERIES 0A2



		MODEL NO.	7LA	9.5LA	
NO.		HORSEPOWER	6.4	9.5	
A	BTU Input	1000's BTU/HR.	266	398	
B	BTU Output at rating from and at 212°F	1000's BTU/HR.	213	318	
C	Heating Surface	SQ. FT.	47	68	
D	Rated Steaming Capacity from and at 212°F	LBS./HR.	220	328	
1WA	Width Cabinet Only	IN.	21	24	
1WB	Width Overall Including Controls	IN.	30	34	
1WD	Firewall Distance From Cabinet	IN.	8	5	
1WK	Width Parker Kompact - Boiler With Return System	IN.	40	44	
2LA	Length of Cabinet Only	IN.	42	53	
2LB	Length Overall Including Blow-Off Valve	IN.	50	61	
3HA	Height of Cabinet Only	IN.	42	42	
3HB	Height Overall Including Draft Hood - (Standard)	IN.	72	74	
3HC	Height Overall Including Barometric Damper (Vert. Outlet/Horizontal Outlet)-(Spec. Order)	IN.	58/55	61/59	
4A	Vent Stack Diameter with Draft Hood - (Standard)	IN.	8	10	
4B	Vent Stack Diameter with Barometric Damper - (Special Order)	IN.	6	8	
7A	Gas Inlet Size - Standard Nat. Gas/ Supply Press. Min: 7" WC; Max: 14" WC	IN.	1	1	
7A1	Natural Gas Manifold Pressure at Burner	IN. WC	6	6	
7B	Gas Inlet Size - High Press. Nat. Gas & Propane Gas / Supply Press. 1-5 PSI	IN.	1	1	
7B1	Propane Gas Manifold Pressure at Burner	IN. WC	11	11	
7H	Gas Inlet Height From Floor	IN.	16	16	
9A HP	Steam Valve Size - High Pressure 60 to 250 PSI	IN.	3/4	1	
9 LP	Steam Outlet Size - Low Pressure 15 PSI or less - (Special Order)	IN.	1-1/2	2	
9B	Steam Outlet Location - From Center of Boiler	IN.	7	9	
10H	Water Inlet Height From Floor	IN.	45	45	
11A	Blow-off Valve Size	IN.	1	1	
11H	Blowdown Line Height From Floor	IN.	3	3	
12A HP	Safety Valve Drain Size - High Pressure - 100 PSI - Standard	OUTLET IN.	1	1	
12A LP	Safety Valve Drain Size - Low Pressure - 15 PSI ("H" Code)- (Special Order)	OUTLET IN.	3/4	1-1/2	
18	Water Column Drain Valve Size	IN.	3/4	3/4	
J	Net Weight Of Boiler	LBS.	805	1080	
K	Domestic Crated Shipping Weight of Boiler	LBS.	950	1235	
L	Same with Return System or Kompact Mounting	LBS.	1240	1525	
MINIMUM LISTED CLEARANCES TO COMBUSTIBLE CONSTRUCTION:		12" Cabinet Sides & Rear	48" Cabinet Top	6" Draft Hood Vent Connector	12" Baro. Damper Chimney Connector
Recommended Clearances for Access: Inspection Doors 18"; Controls 24"; Electrical Panel 30"; Additional Space may be required by Local Codes					

Notes: All of the above dimensions are for a standard trim model. Due to continuous improvement, specifications are subject to change without notice