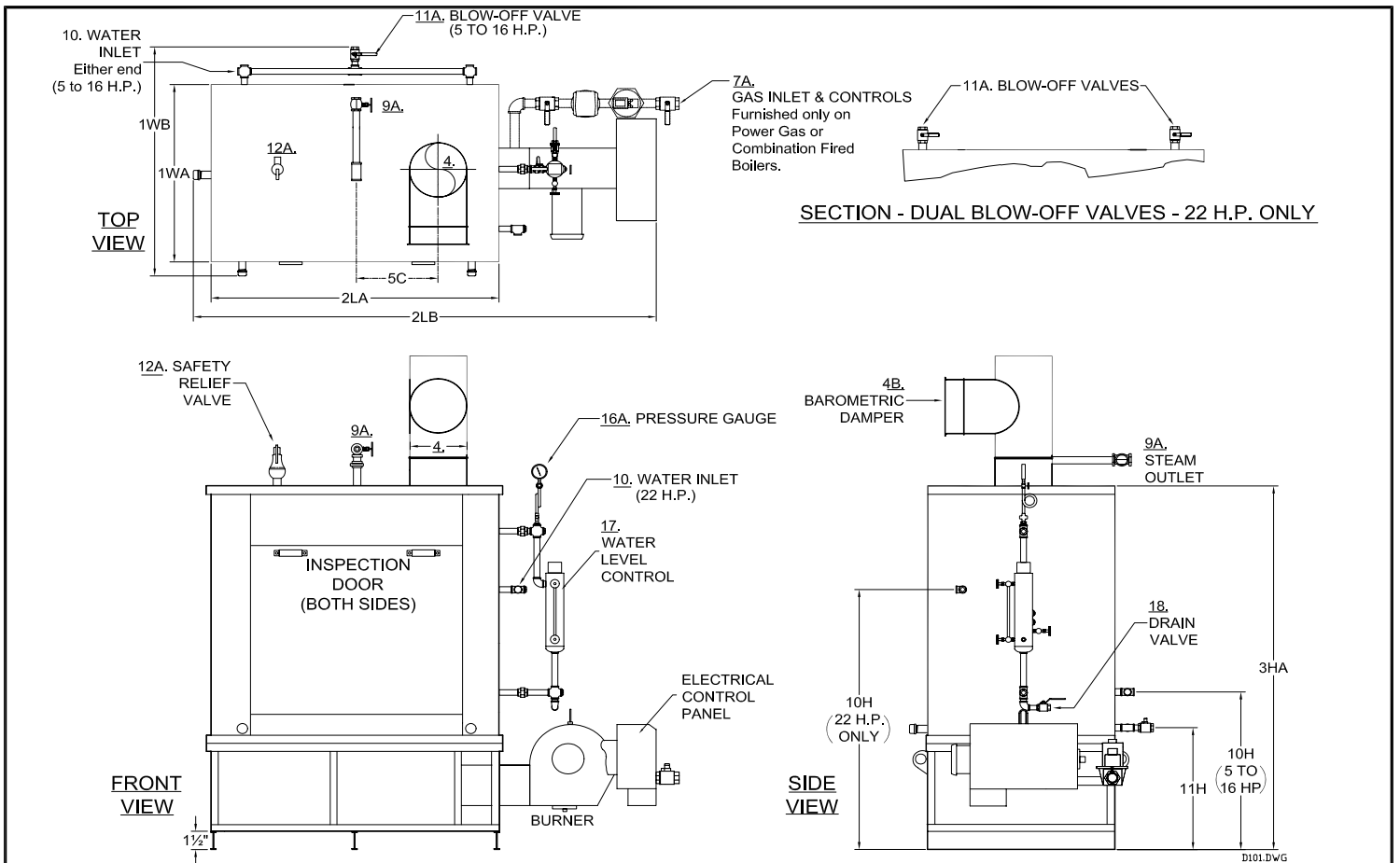


PARKER INDUSTRIAL H-DRUM STEAM BOILER
9.5 TO 25 H.P. - POWER GAS, LIGHT OIL, OR COMBINATION FIRED



		* DENOTES FUEL (G,O,GO)	MODEL NO.	103*-9.5	103*-12	103*-15	103*-25
NO.			HORSEPOWER - HP	9.5	12	15	25
A	BTU Input		1000's BTU/HR.	398	516	645	1075
B	BTU Output at rating from and at 212°F		1000's BTU/HR.	318	402	516	860
C	Heating Surface		SQ. FT.	67	67	90	129
D	Rated Steaming Capacity from and at 212°F		LBS./HR.	328	414	518	863
1WA	Width of Cabinet		IN.	31	31	35	39
1WB	Width Overall Including Blow-Off Valve		IN.	41	41	45	52
2LA	Length of Cabinet Only		IN.	47	47	53	66
2LB	Length Overall Including Burner		IN.	86	86	92	102
3HA	Height of Cabinet Only		IN.	57	57	57	63
3HB	Height Overall Including Barometric Damper		IN.	76	76	79	89
4	Vent Stack Diameter with Barometric Damper		IN.	8	8	10	12
5	Chimney Minimum Height Above Boiler @ Sea Level		FT.	10	12	12	12
5C	Vent Stack Location - From Center of Boiler		IN.	12	12	13	16
7A	Std. Nat. Gas Inlet Size @ Inlet Supply Pressure: Max 14" WC, Min 7" WC		IN.	1	1	1	1
8A	Oil Input Required @ Manufacturer's Capacity Rating (No. 2 Light Fuel Oil)		GPH	2.8	3.7	4.6	7.6
8B	Oil Supply Line Size - Minimum for up to 30 Ft. Length		IN.	3/8	3/8	1/2	1/2
9A HP	Steam Valve Size- High Pressure 60 to 250 PSI - Standard		IN.	1	1	1	1-1/4
9 LP	Steam Outlet Size - Low Pressure 15 PSI or less - (Special Order)		IN.	1-1/2	1-1/2	1-1/2	2
9B	Steam Outlet Location - From Center of Boiler		IN.	Center-Back	Center-Back	Center-Back	Center-Back
10	Water Inlet Size		IN.	1	1	1	1
10H	Water Height From Floor		IN.	22	22	25	53
11A	Blow-off Valve Size		IN.	1	1	1	(2) 1-1/4
11H	Blowdown Line Height From Floor		IN.	18	18	20	24
12A HP	Saf. Valve Drain Size - High Press., 100 PSI Std.		OUTLET IN.	1	1	1	1-1/4
12A LP	Saf. Valve Drain Size - Low Press., 15PSI "H" Stamp - Spec. Order		OUTLET IN.	1-1/2	1-1/2	1-1/2	2
J	Net Weight of Boiler - Approximate		LBS.	1825	1825	2270	3605
K	Domestic Crated Shipping Weight of Boiler - Approximate		LBS.	2075	2075	2575	3930
L	Same with Return System - Approximate		LBS.	2365	2365	2865	4285
MINIMUM LISTED CLEARANCES TO COBUSTIBLE CONSTRUCTION:		18"	48"	18"			
		Cabinet Sides & Rear	Cabinet Top	Baro. Damper Chimney Connector			
Recommended Clearances for Access: Inspection Doors (2/3 of dimension 1WA for tube removal); Controls 24"; Electrical Panel 30"; Additional Space may be required by Local Codes.							

Notes: All of the above dimensions are for a standard trim model. Due to continuous improvement, specifications are subject to change without notice.