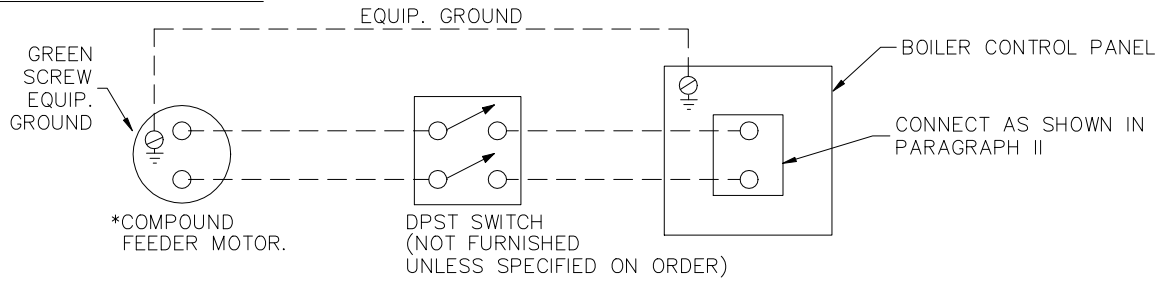


## ADDITIONAL WIRING INSTRUCTIONS FOR AUTOMATIC CHEMICAL FEED PUMPS USED ON PARKER STEAM BOILERS

### I. WIRING: THE PUMP IS DESIGNED TO RUN WHEN BOILER FEED PUMP IS ON.

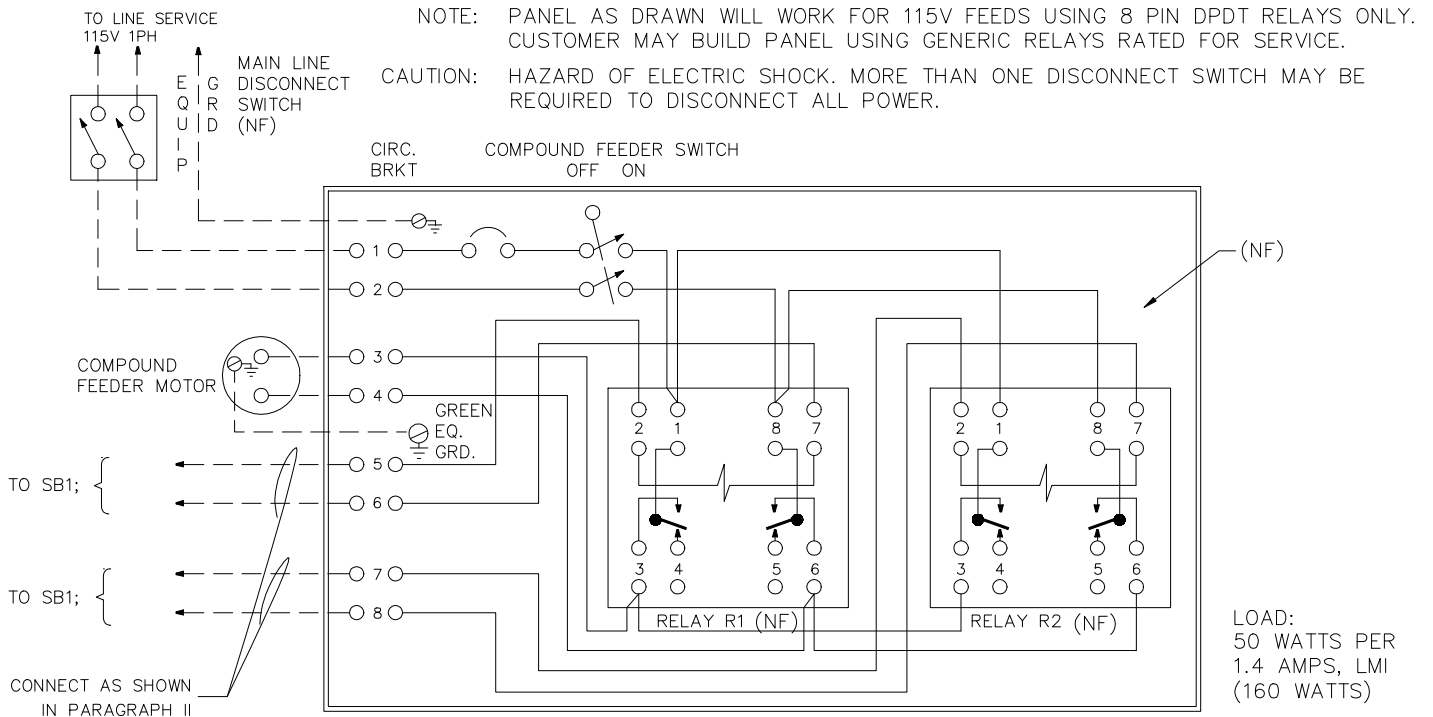
#### A. WIRING FOR SINGLE BOILER



\*50 WATTS FOR PERISTALTIC (ST-15)(A1614-4-115) AND 161 WATTS FOR LMI-121-151.

\*FEEDER MOTOR VOLTAGE MUST BE SAME AS BOILER CONTROL CIRCUIT VOLTAGE (VOLTAGE ON SECONDARY SIDE OF BOILER CONTROL TRANSFORMER, IF FURNISHED 115V 60Hz 1PH.) TRANSFORMER MUST BE SIZED FOR ADDITIONAL LOAD.

#### B. WIRING FOR MULTIPLE BOILER INSTALLATIONS OR WHERE FEEDER MOTOR DIFFERENT FROM BOILER CONTROL CIRCUIT VOLTAGE.



### II. PARKER BOILER CONTROL PANEL CONNECTIONS

A. FOR BOILERS EQUIPPED WITH WARRICK SERIES 1 RELAYS (1D1DO, 1G1DO, 1G6DO) USE TERMINALS #3 & #4 OF PUMP CONTROL RELAY.

B. FOR BOILERS WITH DFL (CIRCUIT BOARD) TYPE LEVEL CONTROLS, CONNECT TO FEED PUMP CONTACTOR COIL TERMINALS (115V ONLY) BLUE & WHITE WIRES. MAKE SURE CONTROL TRANSFORMER, IF FURNISHED IS SIZED FOR ADDITIONAL LOAD. FOR LMI PUMP, TRANSFORMER SIZE MUST BE INCREASED.

ELECT-K-125-P.DWG

**USED ON** PARKER STEAM BOILERS **PART NAME** SUPPLEMENTAL WIRING INSTRUCTIONS

**FOR** AUTOMATIC COMPOUND FEEDERS WITH PERISTALTIC OR LMI FEED PUMP

**DR.** RPC

**DATE** 7D

**PARKER BOILER CO.**

**SCALE** NONE

**CH.**

5930 BANDINI BLVD.

**SUPERCEDES NO.** 6/87

**APPROVED**

LOS ANGELES, CA 90040-2998

**DWG. NO.** ELECTRICAL K-125-P