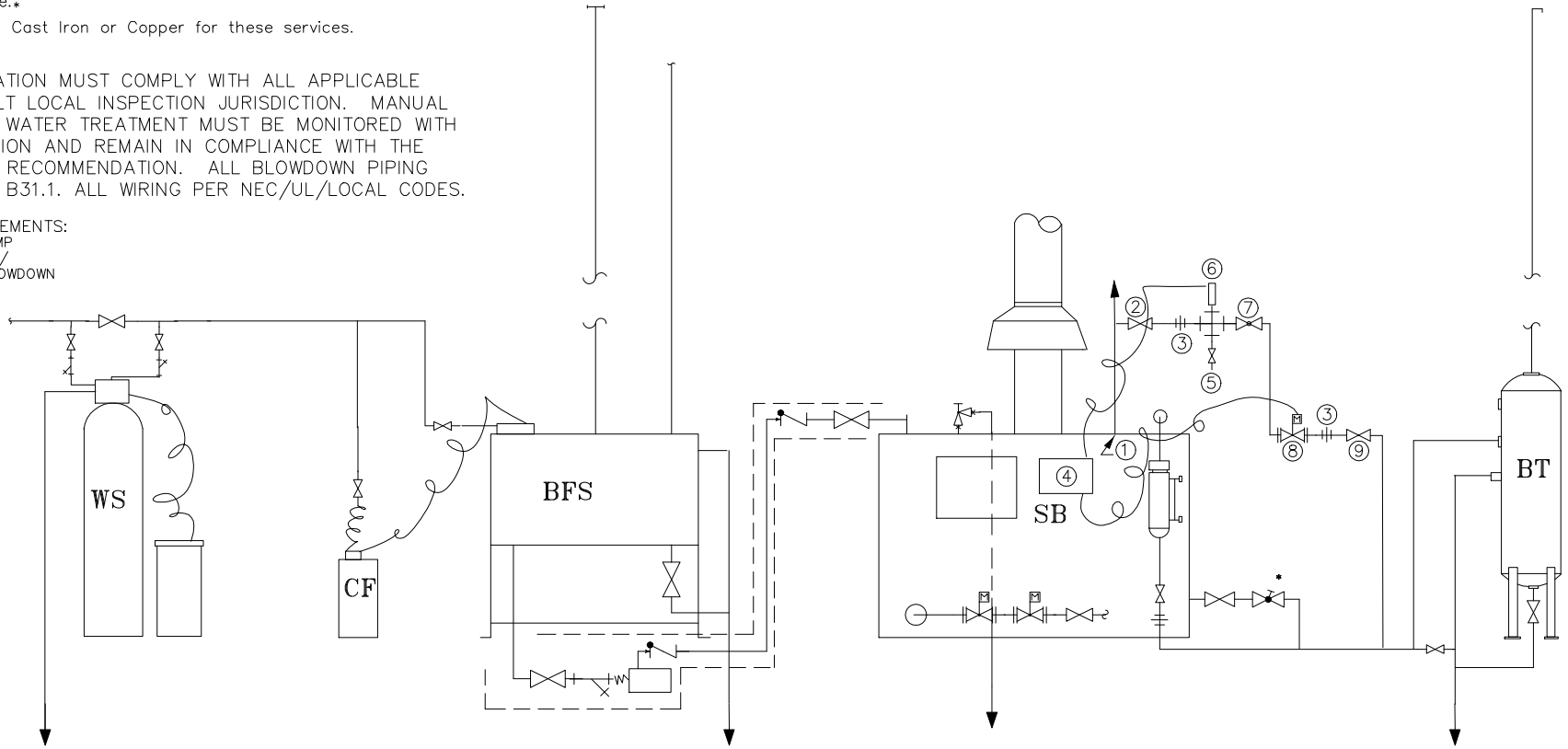


CODE PIPING NOTES (See Parker Bulletin CR-ASME/ANSI)

- 1) All Steam Line piping, Valves and Fittings must be rated for not less than "MAWP" or ____PSI.
- 2) All Blowdown and Water Feed Line Piping, Valves and Fittings must be rated for "MAWP" plus 25% or _____ PSI. For pressures over 100 PSI threaded piping must be seamless steel equal to Schedule 80 and blowdown fittings must be forged steel. Pressures over 100 PSI require additional slow opening blowdown valve.*
- 3) No Galvanized, Cast Iron or Copper for these services.

NOTES:
 ENTIRE INSTALLATION MUST COMPLY WITH ALL APPLICABLE CODES. CONSULT LOCAL INSPECTION JURISDICTION. MANUAL BLOWDOWN AND WATER TREATMENT MUST BE MONITORED WITH CLOSE SUPERVISION AND REMAIN IN COMPLIANCE WITH THE MANUFACTURE'S RECOMMENDATION. ALL BLOWDOWN PIPING PER ASME/ANSI B31.1. ALL WIRING PER NEC/UL/LOCAL CODES.

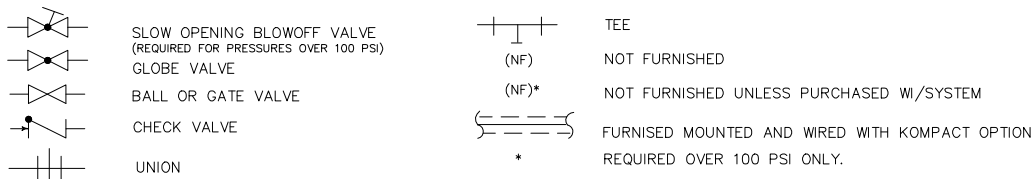
ELECTRICAL REQUIREMENTS:
 115V-1PH-60HZ 15 AMP
 ELECTRICAL SERVICE W/
 DISCONNECT (AUTO BLOWDOWN
 ELECTRICAL ONLY)



SCHEDULE

- SB**- PARKER MODEL _____ H.P. STEAM BOILER, _____ PSI RELIEF VALVE SETTING
- BFS**- PARKER MODEL R-____-___ BOILER FEED SYSTEM, ___V___Ph
- BT**- PARKER MODEL BD_____ BLOWDOWN TANK
- WS**- PARKER MODEL FGA-____-___ AUTOMATIC WATER SOFTENER
- CF**- PARKER MODEL ST-_____ CHEMICAL FEEDER

- ① SURFACE BLOWDOWN CONNECTION POINT
- ② 3/4" UPSTREAM BALL VALVE, _____PSI
- ③ 3/4" FORGED STEEL UNION
- ④ _____ AUTO BLOWDOWN CONTROLLER, 115V/1PH
- ⑤ 1/4" SAMPLE VALVE, NIPPLE & CAP
- ⑥ 1" FORGED STEEL CROSS OR TEE W/SENSOR AND FORGED STEEL BUSHINGS
- ⑦ 3/4" THROTTLING VALVE
- ⑧ 3/4" MOTORIZED BALL VALVE OR SOLENOID VALVE
 (MUST BE INSTALLED BELOW WATER LEVEL AND A MINIMUM OF 24" DOWNSTREAM FROM SENSOR)
- ⑨ 3/4" DOWNSTREAM BALL VALVE, _____PSI



USED ON PARKER STEAM SYSTEM		PART NAME SURFACE BLOWDOWN CONNECTION	
DR. ABB	DATE 3/18/98	FOR PARKER 103 SERIES (7 - 25 H.P.) AUTO BLOWDOWN INSTALLATION SCHEMATIC	
CH.		SCALE CAD DRAWING	
APPROVED		DIMENSIONS NONE	
SUPERSEDES NO. 7D		FILE DESIGNATION 103auto3.dwg	
<p align="center">PARKER BOILER CO.</p> <p align="center">5930 BANDINI BLVD. LOS ANGELES, CA 90040-2999</p>		DWG. NO. 103 INST AUTO3	